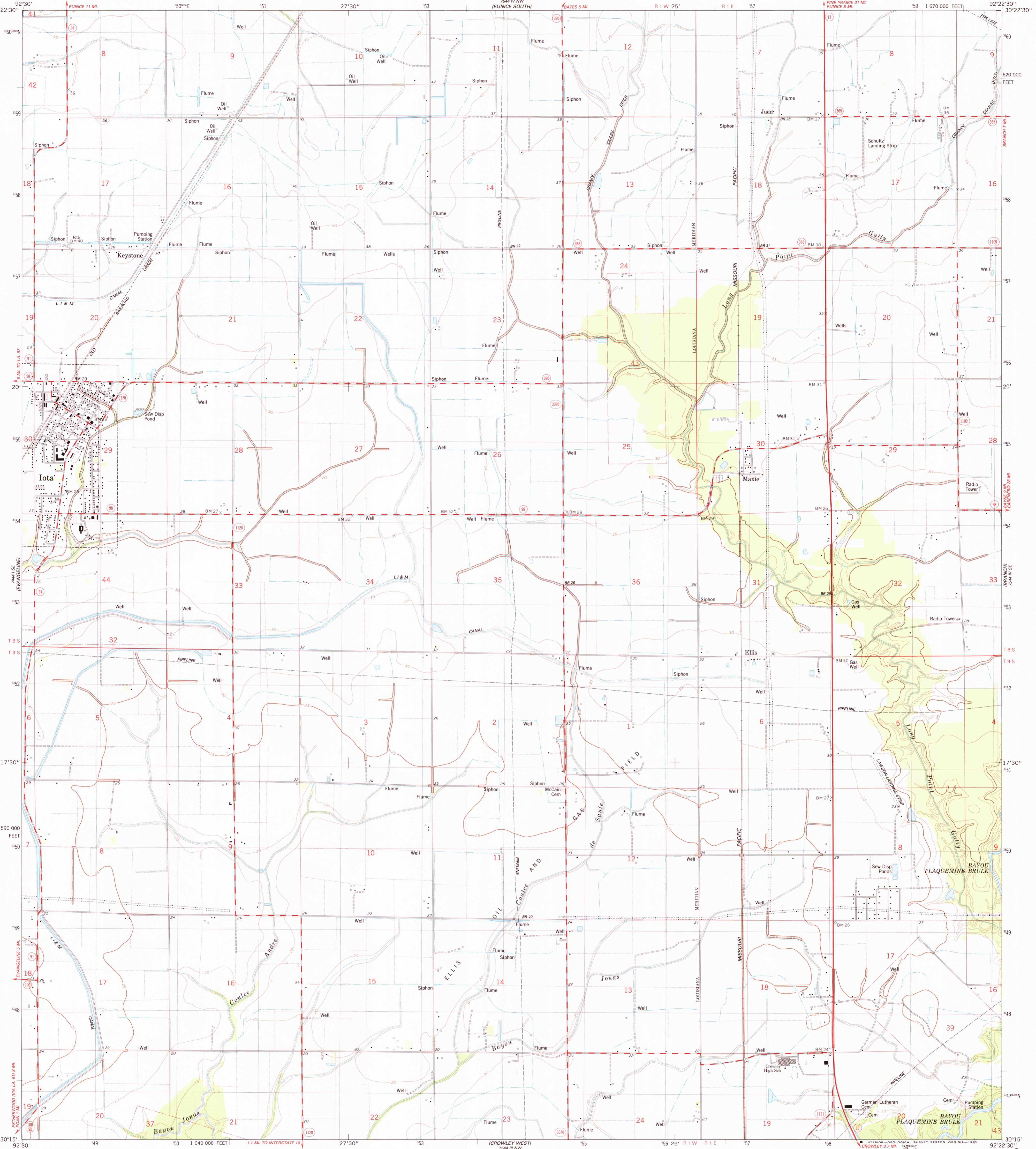
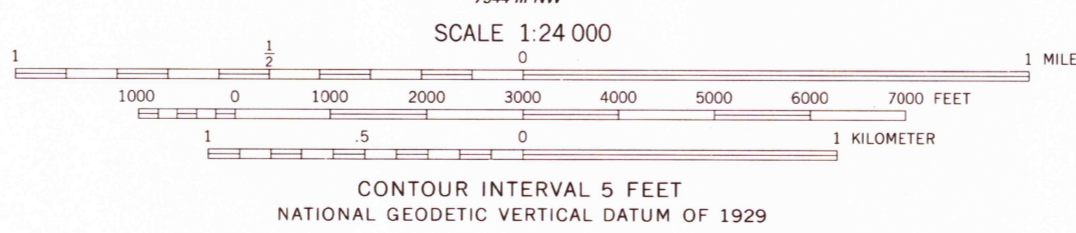
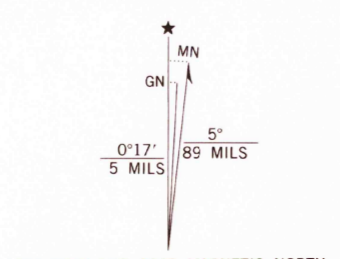


7444 IV NE (RICHARD)

7444 IV NE (RICHARD)

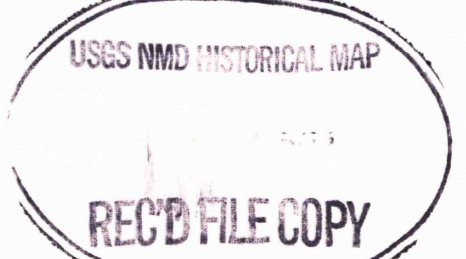


Mapped, edited, and published by the Geological Survey. Control by USGS and NOS/NOAA. Planimetry by photogrammetric methods from aerial photographs taken 1980. Topography by planetable surveys 1981. Map edited 1983. Projection and 10,000-foot grid ticks: Louisiana coordinate system, south zone (Lambert conformal conic) 1000-meter Universal Transverse Mercator grid, zone 15 1927 North American Datum. To place on the predicted North American Datum 1983, move the projection lines 18 meters south and 14 meters east as shown by dashed corner ticks. Fine red dashed lines indicate selected fence and field lines where generally visible on aerial photographs. This information is unchecked.



CONTOUR INTERVAL 5 FEET NATIONAL GEODETIC VERTICAL DATUM OF 1929. THIS MAP COMPLIES WITH NATIONAL MAP ACCURACY STANDARDS FOR SALE BY U. S. GEOLOGICAL SURVEY, DENVER, COLORADO 80225, OR RESTON, VIRGINIA 22092 AND LOUISIANA DEPARTMENT OF PUBLIC WORKS, BATON ROUGE, LOUISIANA 70804. A FOLDER DESCRIBING TOPOGRAPHIC MAPS AND SYMBOLS IS AVAILABLE ON REQUEST.

ROAD CLASSIFICATION: Primary highway, hard surface; Secondary highway, hard surface; Interstate Route; U. S. Route; State Route; Light-duty road, hard or improved surface; Unimproved road.



IOTA, LA. SW1/4 EUENCE 15' QUADRANGLE N3015-W9222.517.5 1983 DMA 7544 IV SW-SERIES V885

4/23/84