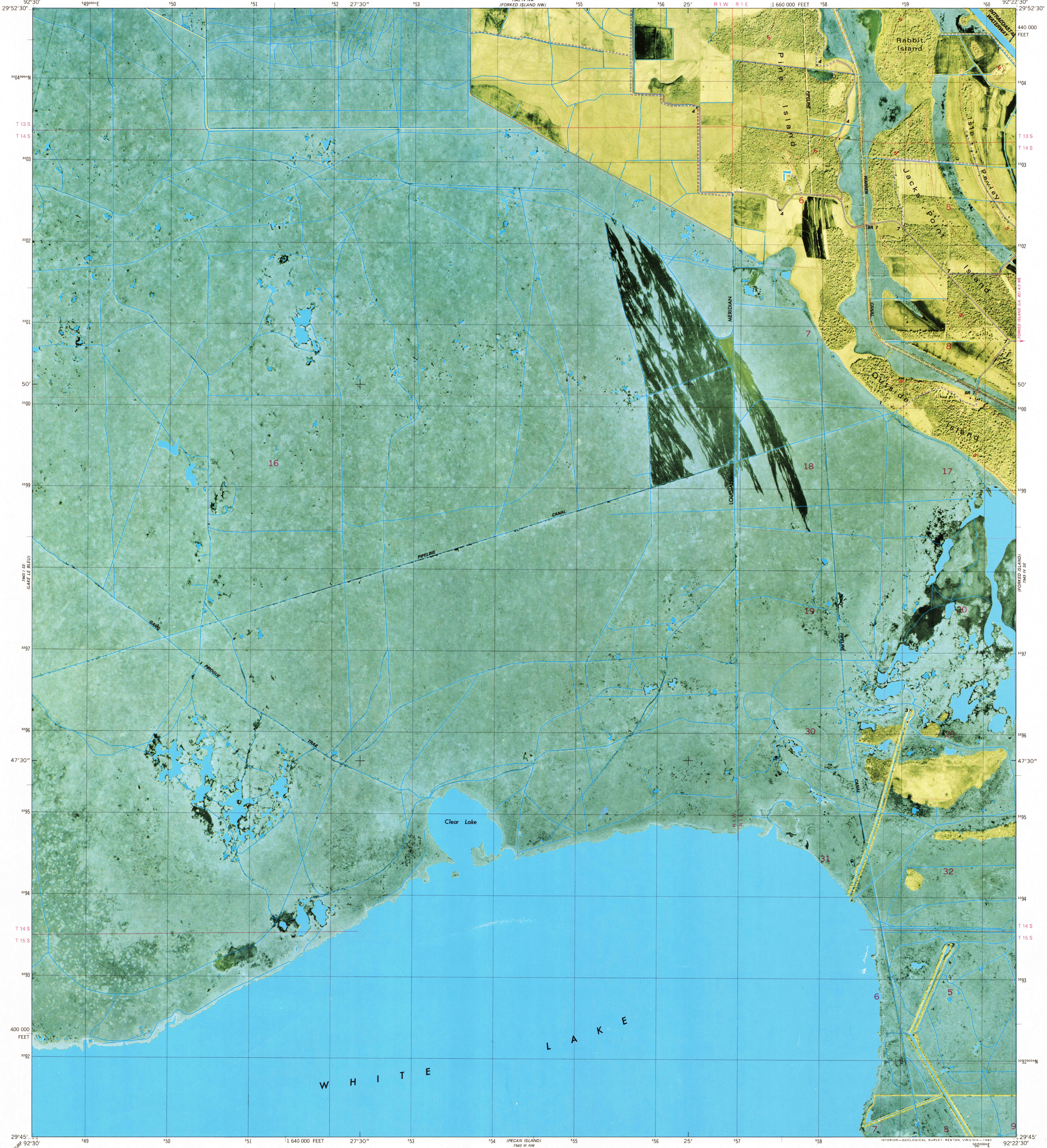


7443 IV SE
(LAKE LE BIEU)

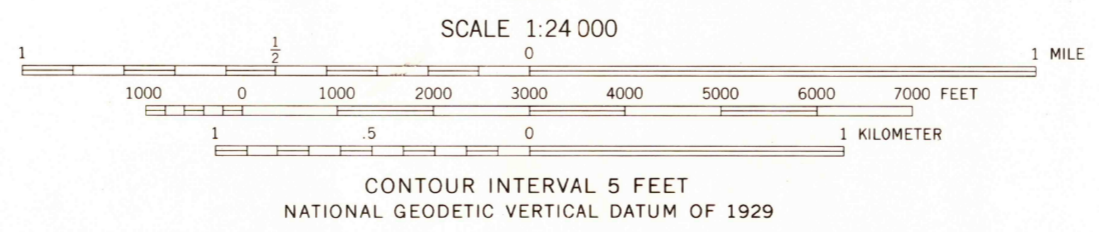
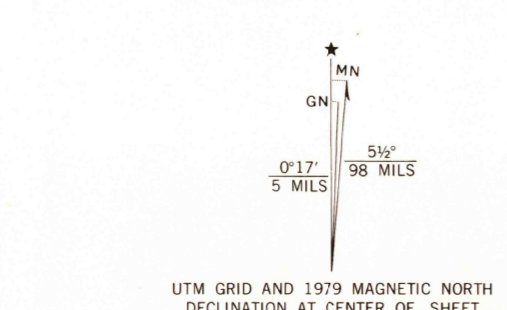
UNITED STATES
DEPARTMENT OF THE INTERIOR
GEOLOGICAL SURVEY

JACKS POINT ISLAND QUADRANGLE
LOUISIANA-VERMILION PARISH
7.5 MINUTE SERIES ORTHOPHOTOMAP (TOPOGRAPHIC)

7443 IV SE
(LAKE LE BIEU)



Mapped, edited, and published by the Geological Survey
Control by USGS and NOS/NOAA
Orthophotomap prepared from high-altitude aerial photograph taken November 13, 1974. Topography by planetable surveys 1977. Supersedes Schooner Bayou SW planimetric map dated 1932. Map edited 1979.
Projection and 10,000-foot grid ticks: Louisiana coordinate system, south zone (Lambert conformal conic) 1000-meter Universal Transverse Mercator grid, zone 15 1927 North American datum
To place on the predicted North American Datum 1983 move the projection lines 19 meters south and 14 meters east as shown by dashed corner ticks
All or part of this quadrangle lies within a subsidence area
Where omitted, land lines have not been established or are not shown because of insufficient data
Dotted land lines established by private survey



USGS
Historical File
Topographic Division

ROAD CLASSIFICATION

Primary highway, hard surface	Light-duty road, hard or improved surface
Secondary highway, hard surface	Unimproved road
Interstate Route	U. S. Route
	State Route

THIS MAP COMPLIES WITH NATIONAL MAP ACCURACY STANDARDS FOR SALE BY U. S. GEOLOGICAL SURVEY, DENVER, COLORADO 80225, OR RESTON, VIRGINIA 22092 AND STATE OF LOUISIANA, DEPARTMENT OF PUBLIC WORKS, BATON ROUGE, LOUISIANA 70804. A FOLDER DESCRIBING TOPOGRAPHIC MAPS AND SYMBOLS IS AVAILABLE ON REQUEST.

JACKS POINT ISLAND, LA.
SW 1/4 FORKED ISLAND 15' QUADRANGLE
N2945-W9222.5/7.5

1979

DMA 7543 IV SW-SERIES V8850

FEB 26 1981
2401