

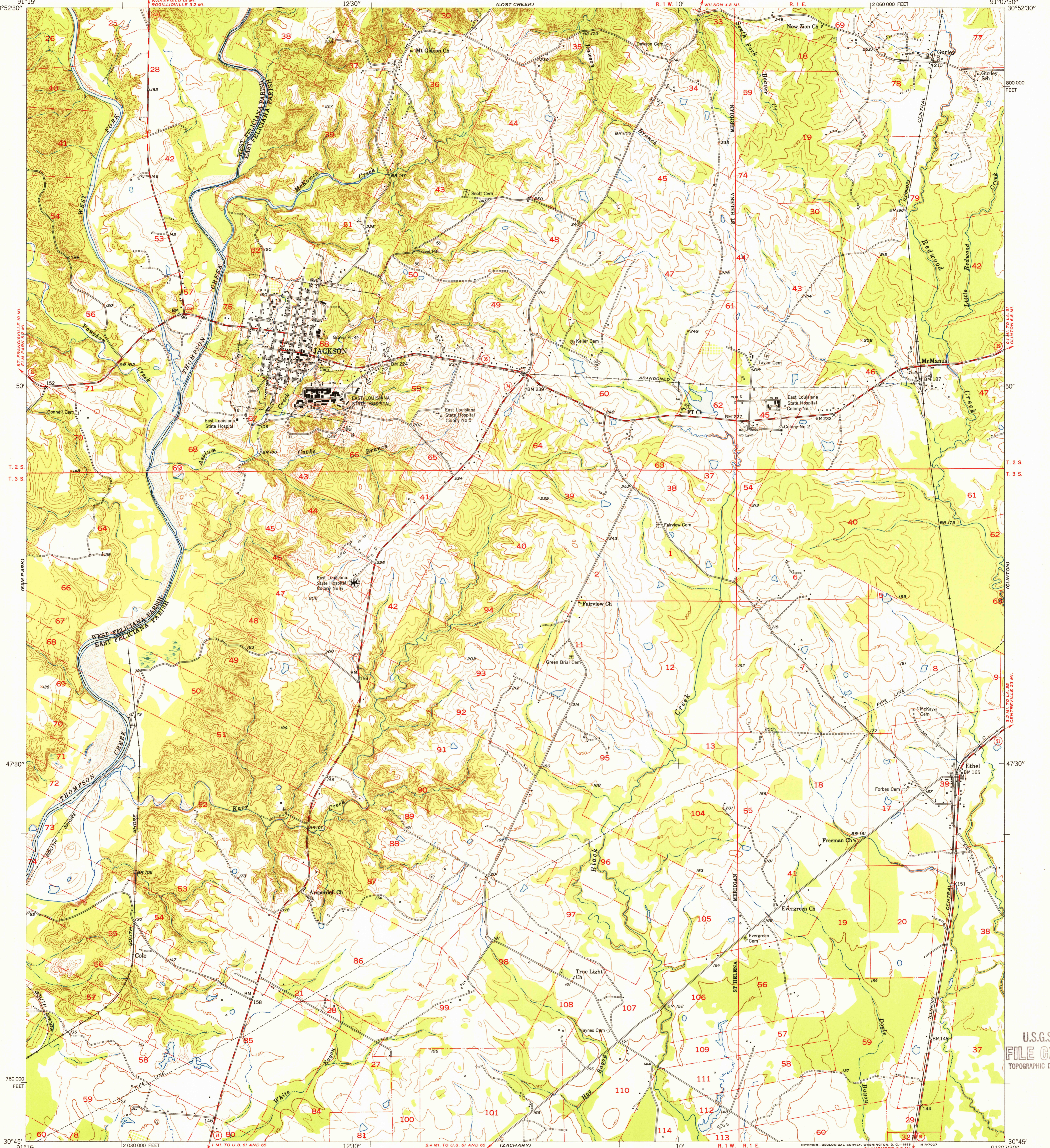
FRANCISVILLE 10 MI.
30°52'30"

UNITED STATES
DEPARTMENT OF THE INTERIOR
GEOLOGICAL SURVEY

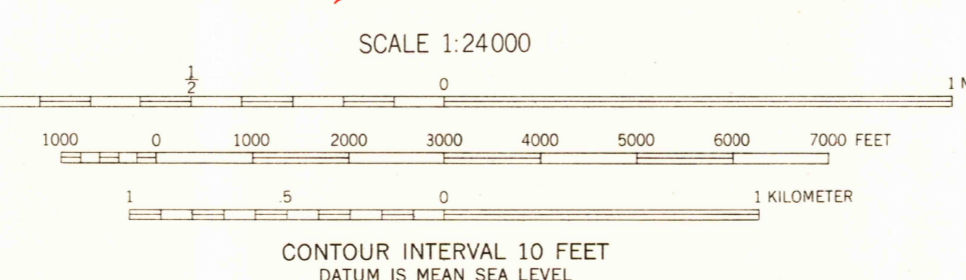
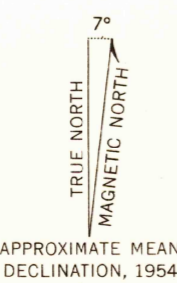
U.S.G.S.
FILE COPY
TOPOGRAPHIC DIVISION

JACKSON QUADRANGLE
LOUISIANA
7.5 MINUTE SERIES (TOPOGRAPHIC)

INORWOOD
91°07'30"



Mapped, edited, and published by the Geological Survey
Control by USGS and USC&GS
Topography from aerial photographs by Kelsh plotter
Aerial photographs taken 1952. Field check 1954
Polyconic projection. 1927 North American datum
10,000-foot grid based on Louisiana coordinate system,
south zone



USGS Historical File Topographic Division

ROAD CLASSIFICATION

Heavy-duty	4 LANE 6 LANE	Light-duty
Medium-duty	4 LANE 6 LANE	Unimproved dirt

U.S. Route State Route



THIS MAP COMPLIES WITH NATIONAL MAP ACCURACY STANDARDS
FOR SALE BY U. S. GEOLOGICAL SURVEY, FEDERAL CENTER, DENVER, COLORADO OR WASHINGTON 25, D. C.
AND BY THE STATE OF LOUISIANA, DEPARTMENT OF PUBLIC WORKS, BATON ROUGE 4, LOUISIANA
A FOLDER DESCRIBING TOPOGRAPHIC MAPS AND SYMBOLS IS AVAILABLE ON REQUEST

JACKSON, LA.
N3045-W9107.5/7.5
1954

U.S.G.S.
FILE COPY
TOPOGRAPHIC DIVISION

MAY 26 1955