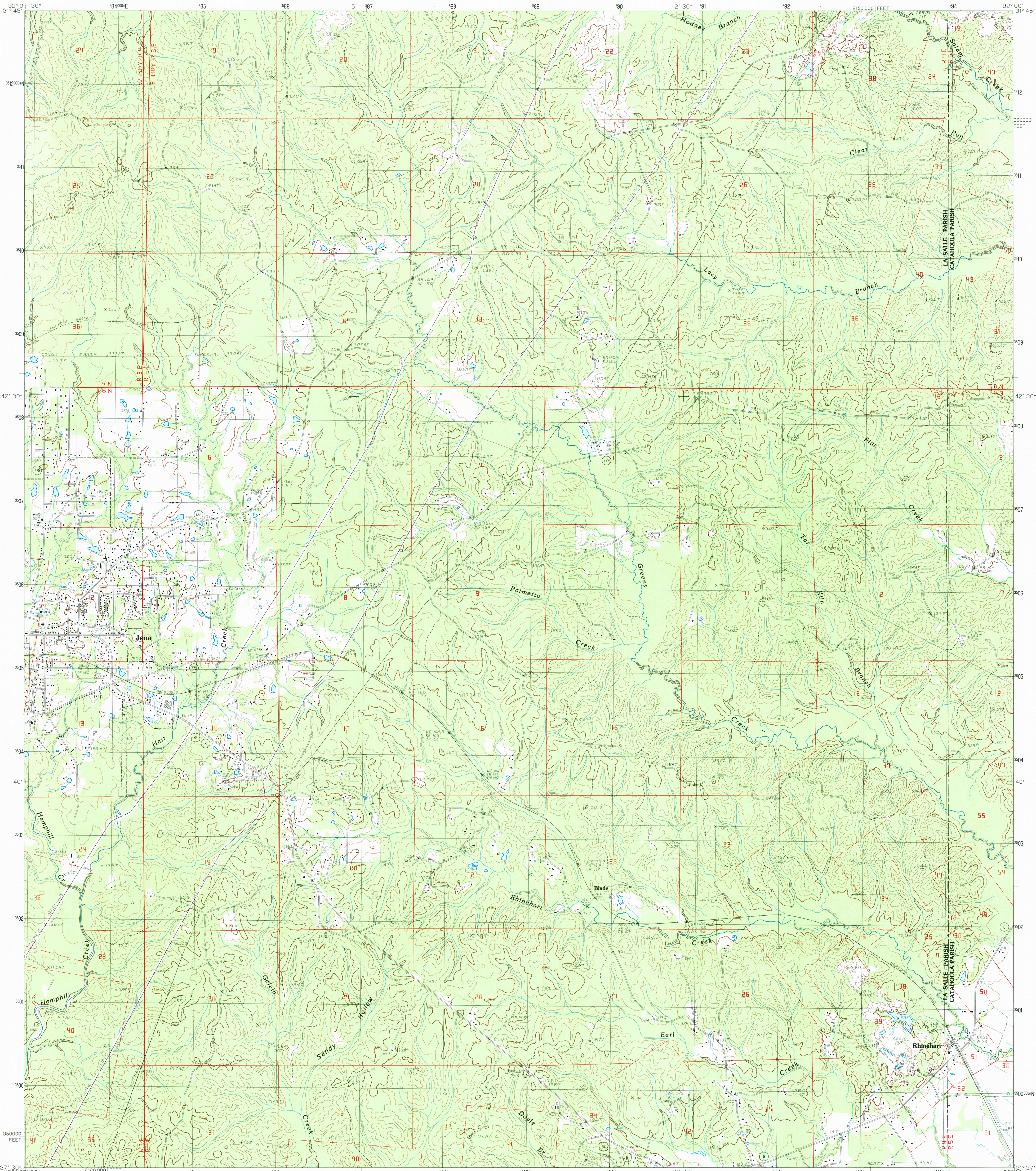


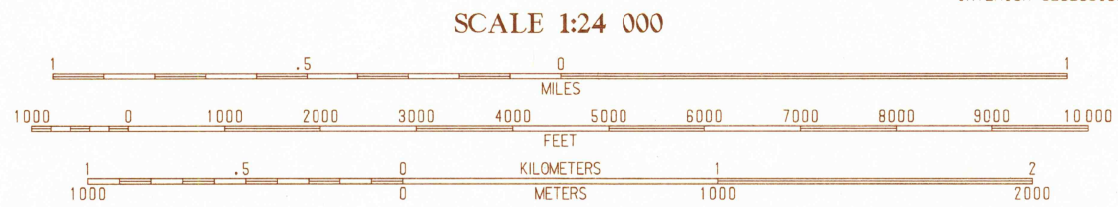
UNITED STATES
DEPARTMENT OF THE INTERIOR
GEOLOGICAL SURVEY

JENA EAST QUADRANGLE
LOUISIANA
7.5 MINUTE SERIES (TOPOGRAPHIC)



PRODUCED BY THE UNITED STATES GEOLOGICAL SURVEY
CONTROL BY: USGS AND NOS/NOAA
COMPILED FROM AERIAL PHOTOGRAPHS TAKEN: 1979
FIELD CHECKED: 1982 MAP EDITED: 1985
PROJECTION: LAMBERT CONFORMAL CONIC
GRID: 1000-METER UNIVERSAL TRANSVERSE MERCATOR ZONE 15
1000-FOOT STATE GRID TICS: LOUISIANA NORTH ZONE
UTM GRID DECLINATION: 0°30' EAST
1984 MAGNETIC NORTH DECLINATION: 4°30' EAST
VERTICAL DATUM: NATIONAL GEODETIC VERTICAL DATUM OF 1929
HORIZONTAL DATUM: 1927 NORTH AMERICAN DATUM
To place on the predicted North American Datum of 1983,
move the projection lines as shown by dashed corner ticks
(14 meters south and 13 meters east)
There may be private inholdings within the boundaries of any
Federal and State Reservations shown on this map
No distinction made between houses, barns, and other buildings

PROVISIONAL MAP
Produced from original
manuscript drawings. Informa-
tion shown as of date of
photography. 1



THIS MAP COMPLIES WITH NATIONAL MAP ACCURACY STANDARDS
FOR SALE BY U.S. GEOLOGICAL SURVEY, DENVER, COLORADO 80225, OR RESTON, VIRGINIA 22092
AND LOUISIANA DEPARTMENT OF PUBLIC WORKS, BATON ROUGE, LOUISIANA 70804

1	2	3	1	Summersville
2	3	4	2	Nickel
3	4	5	3	Almwood
4	5	6	4	Jena West
5	6	7	5	Manifest
6	7	8	6	Nabo
7	8	9	7	Bird Island Point
8	9	10	8	Walters

ADJOINING 7.5' QUADRANGLE NAMES

ROAD LEGEND
Improved Road
Unimproved Road
Trail
Interstate Route U.S. Route State Route

JENA EAST, LOUISIANA
NE 4 JENA 15' QUADRANGLE
PROVISIONAL EDITION 1985

31092-FI-TF-024

