

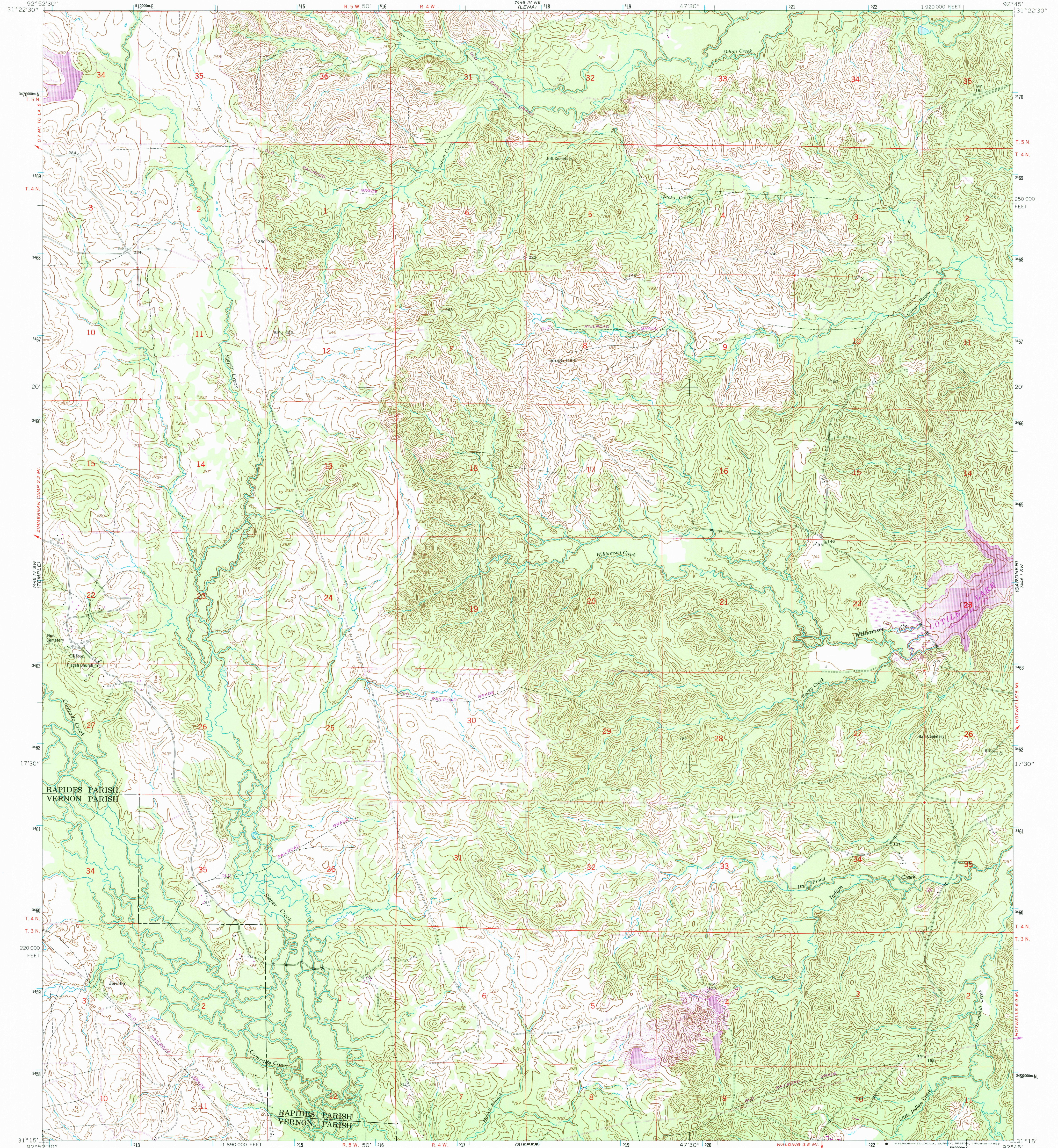
746 IV NW
(6000) 1:250,000

UNITED STATES
DEPARTMENT OF THE INTERIOR
GEOLOGICAL SURVEY

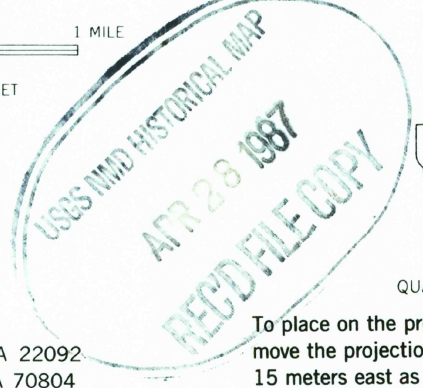
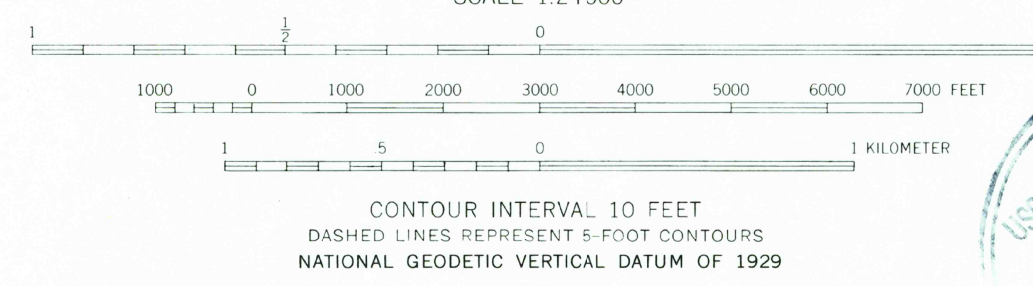
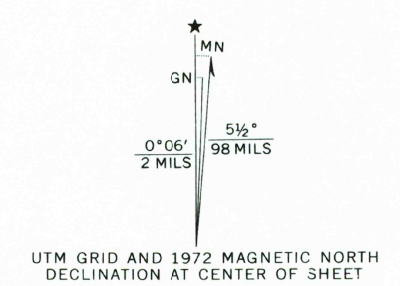
UNITED STATES
DEPARTMENT OF THE ARMY
CORPS OF ENGINEERS

JERICO QUADRANGLE
LOUISIANA
7.5 MINUTE SERIES (TOPOGRAPHIC)

746 IV NW
(6000) 1:250,000



Mapped by the Army Map Service
Published for civil use by the Geological Survey
Control by USGS, USCGS, USCE, and Louisiana Geodetic Survey
Topography from aerial photographs by photogrammetric methods
Aerial photographs taken 1953. Field check 1954
Polyconic projection. 1927 North American datum
10,000-foot grid based on Louisiana coordinate system, north zone
1000-meter Universal Transverse Mercator grid ticks,
zone 15, shown in blue
Unchecked elevations are shown in brown
Revisions shown in purple compiled by the Geological Survey from
aerial photographs taken 1972. This information not field checked



ROAD CLASSIFICATION
Light-duty ————— Unimproved dirt - - - - -

THIS MAP COMPLIES WITH NATIONAL MAP ACCURACY STANDARDS
FOR SALE BY U. S. GEOLOGICAL SURVEY, DENVER, COLORADO 80225, OR RESTON, VIRGINIA 22092
AND STATE OF LOUISIANA, DEPARTMENT OF PUBLIC WORKS, BATON ROUGE, LOUISIANA 70804
A FOLDER DESCRIBING TOPOGRAPHIC MAPS AND SYMBOLS IS AVAILABLE ON REQUEST

To place on the predicted North American Datum 1983,
move the projection lines 16 meters south and
15 meters east as shown by dashed corner ticks

JERICO, LA.

31092-C7-TF-024

1954
PHOTOREVISED 1972
DMA 7446 IV SE-SERIES V885