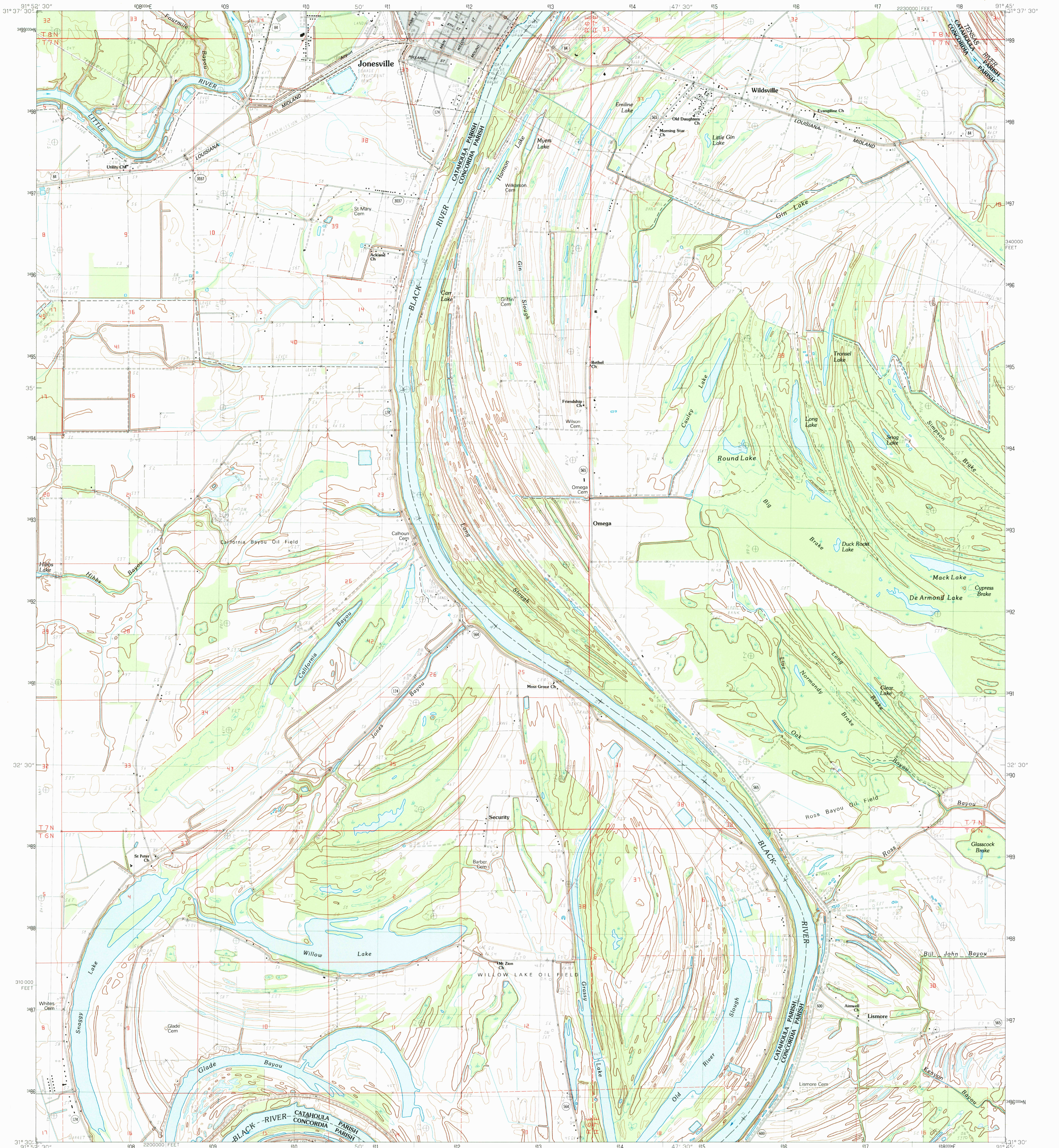


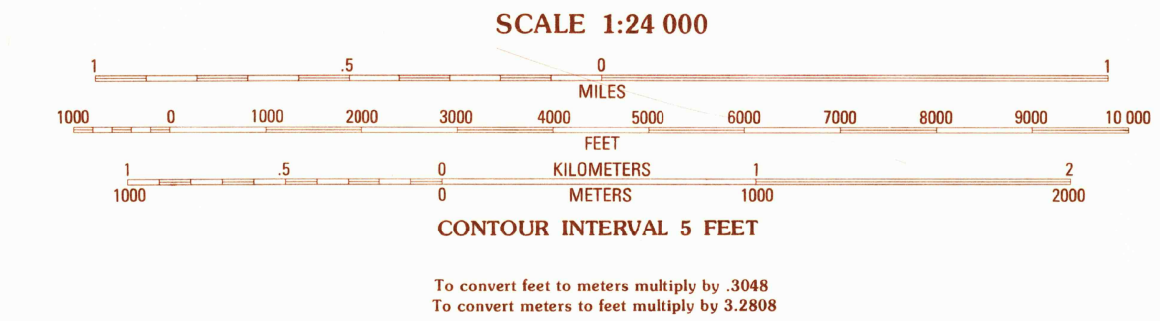
UNITED STATES  
DEPARTMENT OF THE INTERIOR  
GEOLOGICAL SURVEY

JONESVILLE SOUTH QUADRANGLE  
LOUISIANA  
7.5 MINUTE SERIES (TOPOGRAPHIC)



PRODUCED BY THE UNITED STATES GEOLOGICAL SURVEY  
CONTROL BY USGS AND NOS/NOAA  
COMPILED FROM AERIAL PHOTOGRAPHS TAKEN ..... 1977  
FIELD CHECKED ..... 1979. MAP EDITED ..... 1983  
PROJECTION ..... LAMBERT CONFORMAL CONIC  
GRID: 1000-METER UNIVERSAL TRANSVERSE MERCATOR ..... ZONE 15  
10,000-FOOT STATE GRID TICKS ..... LOUISIANA, NORTH ZONE  
UTM GRID DECLINATION ..... 0°37' EAST  
1983 MAGNETIC NORTH DECLINATION ..... 4°30' EAST  
VERTICAL DATUM ..... NATIONAL GEODETIC VERTICAL DATUM OF 1929  
HORIZONTAL DATUM ..... 1927 NORTH AMERICAN DATUM  
To place on the predicted North American Datum of 1983  
move the projection lines as shown by dashed corner ticks  
(15 meters south and 12 meters east)  
There may be private inholdings within the boundaries of any  
Federal and State reservations shown on this map  
Gray tint indicates area in which selected buildings are shown

**PROVISIONAL MAP**  
Produced from original  
manuscript drawings. Informa-  
tion shown as of date of  
field check.



THIS MAP COMPLIES WITH NATIONAL MAP ACCURACY STANDARDS  
FOR SALE BY U.S. GEOLOGICAL SURVEY, DENVER, COLORADO 80225 OR RESTON, VIRGINIA 22092  
AND THE STATE OF LOUISIANA, DEPARTMENT OF PUBLIC WORKS, BATON ROUGE, LOUISIANA 70804



1	2	3	1 Manifest
			2 Jonesville North
			3 Dunbar
4		5	4 Walters
			5 Frogmore
			6 Larto Lake North
6	7	8	7 Mayna
			8 Monterey

ADJOINING 7.5 QUADRANGLE NAMES

**ROAD LEGEND**

Improved Road .....  
Unimproved Road .....  
Trail .....

Interstate Route ..... U.S. Route ..... State Route .....

**JONESVILLE SOUTH, LOUISIANA**  
SE4 JONESVILLE 15' QUADRANGLE  
PROVISIONAL EDITION 1983  
31091-E7-TF-024

