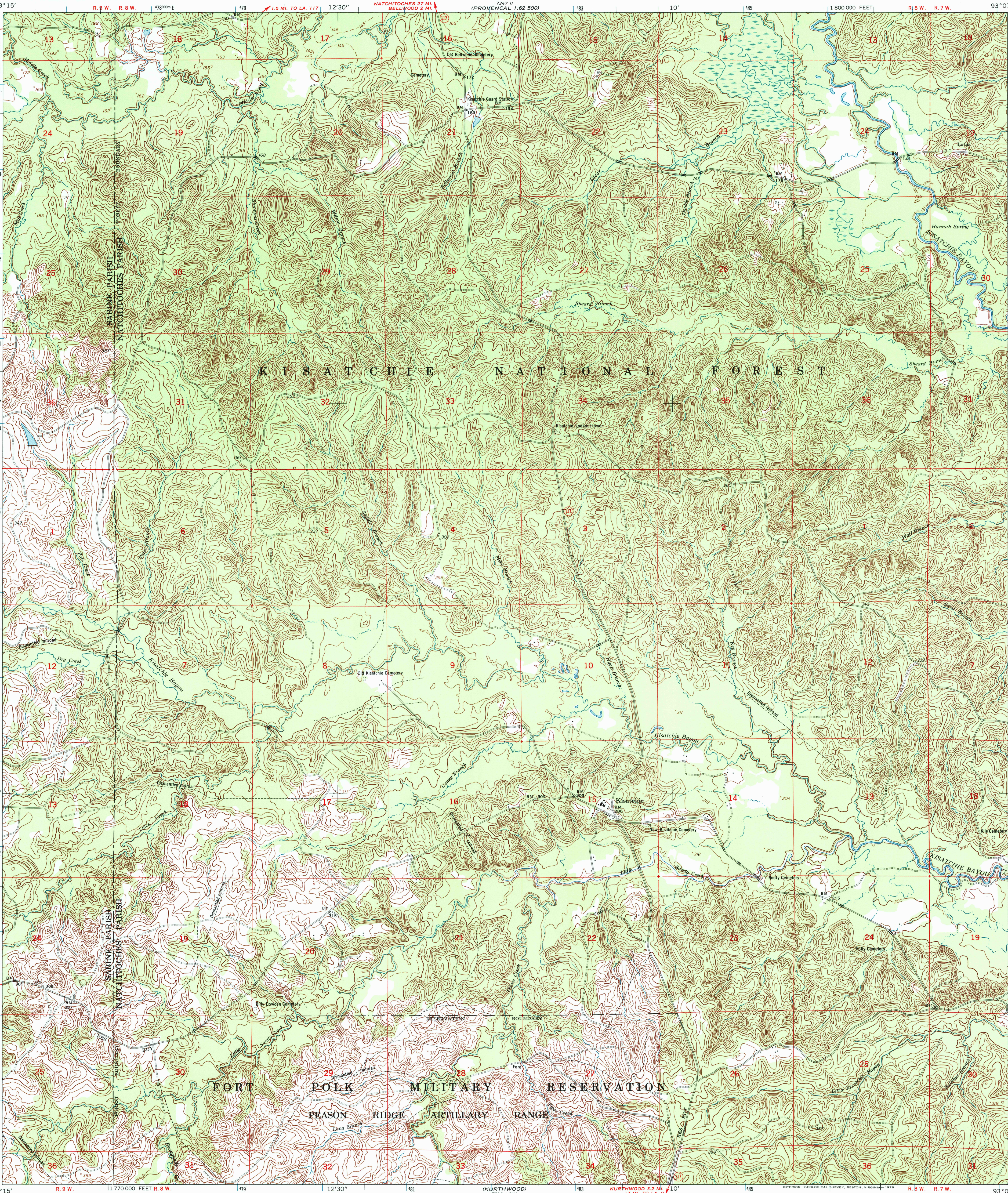


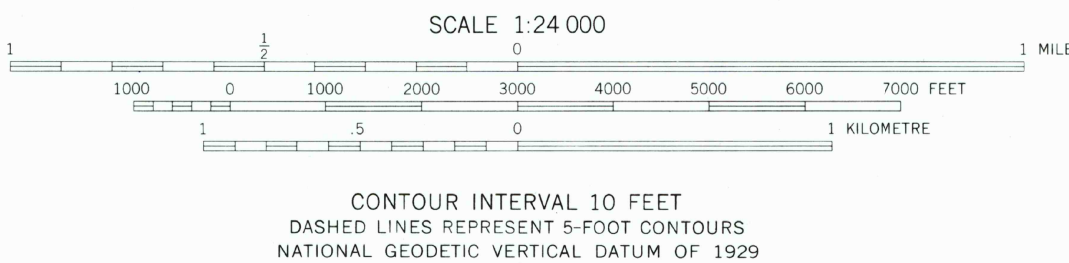
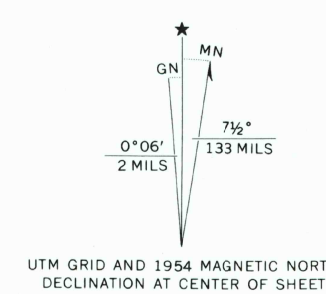
UNITED STATES
DEPARTMENT OF THE INTERIOR
GEOLOGICAL SURVEY

UNITED STATES
DEPARTMENT OF THE ARMY
CORPS OF ENGINEERS

KISATCHIE QUADRANGLE
LOUISIANA
7.5 MINUTE SERIES (TOPOGRAPHIC)
NW/4 KISATCHIE 15' QUADRANGLE



Maped by the Army Map Service
Published for civil use by the Geological Survey
Control by USGS, USC&GS, USCE, and Louisiana Geodetic Survey
Topography from aerial photographs by photogrammetric methods
Aerial photographs taken 1954. Field check 1954
Polyconic projection. 1927 North American datum
10,000-foot grid based on Louisiana coordinate system, north zone
1000 metre Universal Transverse Mercator grid ticks,
zone 15, shown in blue
Dashed land lines indicate approximate locations
Unchecked elevations are shown in brown
Map photoinspected 1972
No major culture or drainage changes observed



THIS MAP COMPLIES WITH NATIONAL MAP ACCURACY STANDARDS
FOR SALE BY U.S. GEOLOGICAL SURVEY, DENVER, COLORADO 80225, OR RESTON, VIRGINIA 22092
AND BY THE STATE OF LOUISIANA, DEPARTMENT OF PUBLIC WORKS, BATON ROUGE, LOUISIANA 70804
A FOLDER DESCRIBING TOPOGRAPHIC MAPS AND SYMBOLS IS AVAILABLE ON REQUEST



ROAD CLASSIFICATION
Light-duty ————— Unimproved dirt —————
State Route
RECEIVED
JUL 3 2000
USGS NW/4
HISTORICAL MAP ARCHIVES
KISATCHIE, LA.
NW/4 KISATCHIE 15' QUADRANGLE
N3122.5—W9307.5/7.5
1954
PHOTOINSPECTED 1972
AMS 7346 I NW—SERIES V885

