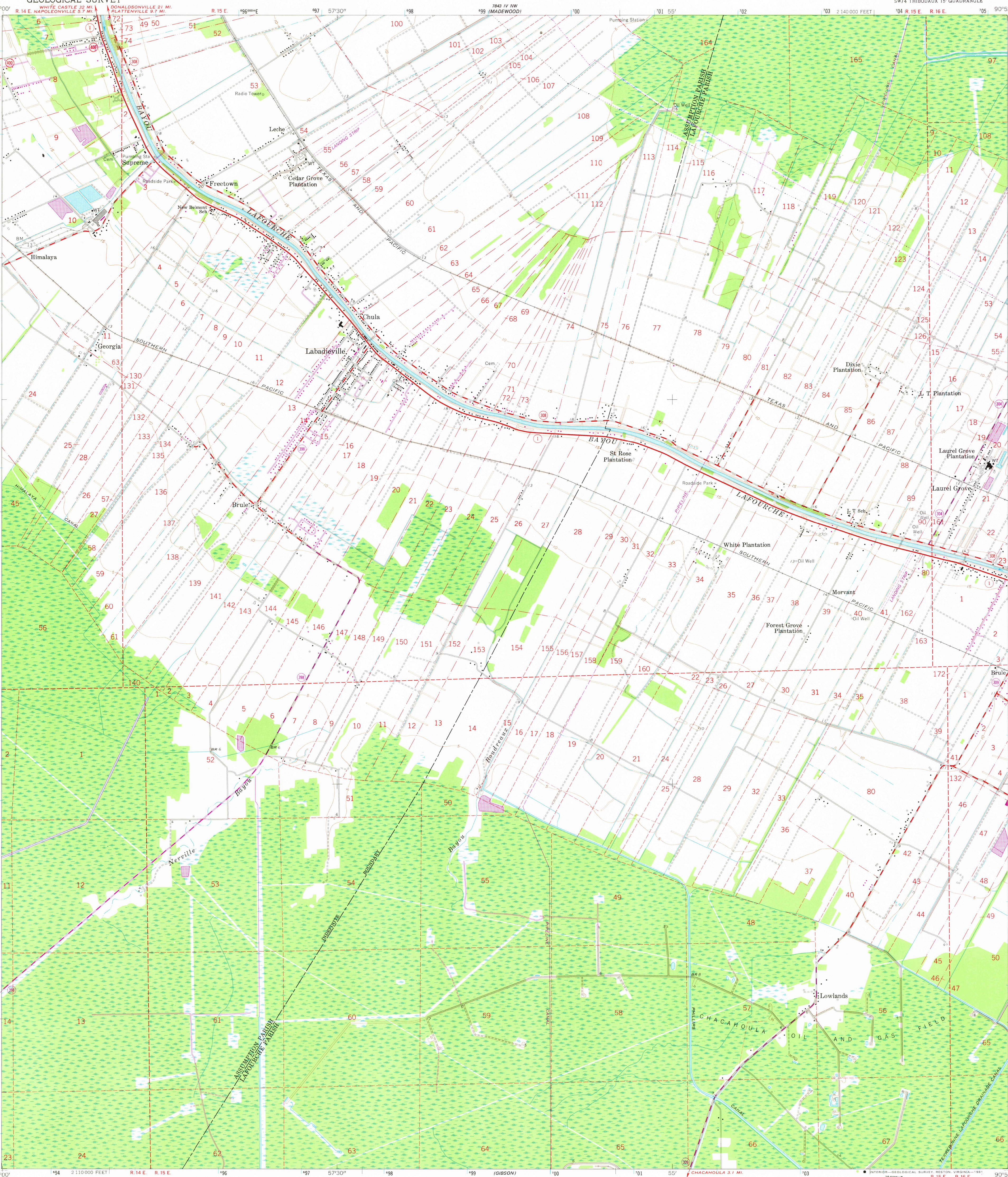
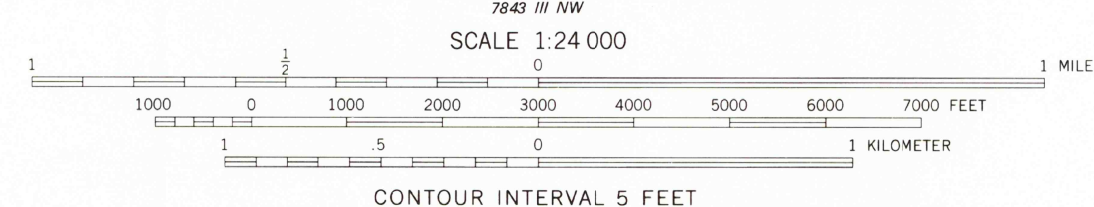
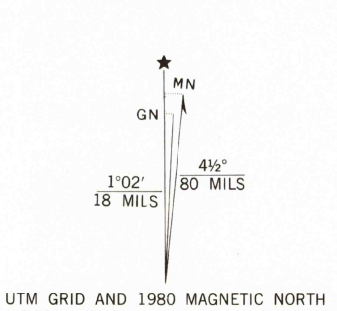


UNITED STATES
DEPARTMENT OF THE INTERIOR
GEOLOGICAL SURVEY

LABADIEVILLE QUADRANGLE
LOUISIANA
7.5 MINUTE SERIES (TOPOGRAPHIC)
SW 1/4 THIBODAOX 15' QUADRANGLE



Maped, edited, and published by the Geological Survey
Control by USGS, USC&GS, and Louisiana Geodetic Survey
Planimetry by photogrammetric methods from aerial photographs taken
1961. Topography by planetable surveys 1938. Revised 1962
Polyconic projection. 1927 North American datum
10,000-foot grid based on Louisiana coordinate system, south zone
1000-meter Universal Transverse Mercator grid ticks,
zone 15, shown in blue
To place on the predicted North American Datum 1983
move the projection lines 19 meters south and
10 meters east as shown by dashed corner ticks
All or part of this quadrangle lies within a subsidence area
Revisions shown in purple and woodland compiled from
aerial photographs taken 1978. Map edited 1980
This information not field checked



THIS MAP COMPLIES WITH NATIONAL MAP ACCURACY STANDARDS
FOR SALE BY U. S. GEOLOGICAL SURVEY, DENVER, COLORADO 80228, OR RESTON, VIRGINIA 22092
AND STATE OF LOUISIANA, DEPARTMENT OF PUBLIC WORKS, BATON ROUGE, LOUISIANA 70804
A FOLDER DESCRIBING TOPOGRAPHIC MAPS AND SYMBOLS IS AVAILABLE ON REQUEST

ROAD CLASSIFICATION
Heavy-duty ——— Light-duty ———
Medium-duty ——— Unimproved dirt ———
State Route ———

JUN 3 1981

LABADIEVILLE, LA.
SW 1/4 THIBODAOX 15' QUADRANGLE
N 2945 — W 9052.5 / 7.5

1962
PHOTOREVISED 1980
DMA 7843 IV SW — SERIES V885

USGS
HISTORICAL FILE
NATIONAL MAPPING DIVISION

LOUISIANA
QUADRANGLE LOCATION

2000