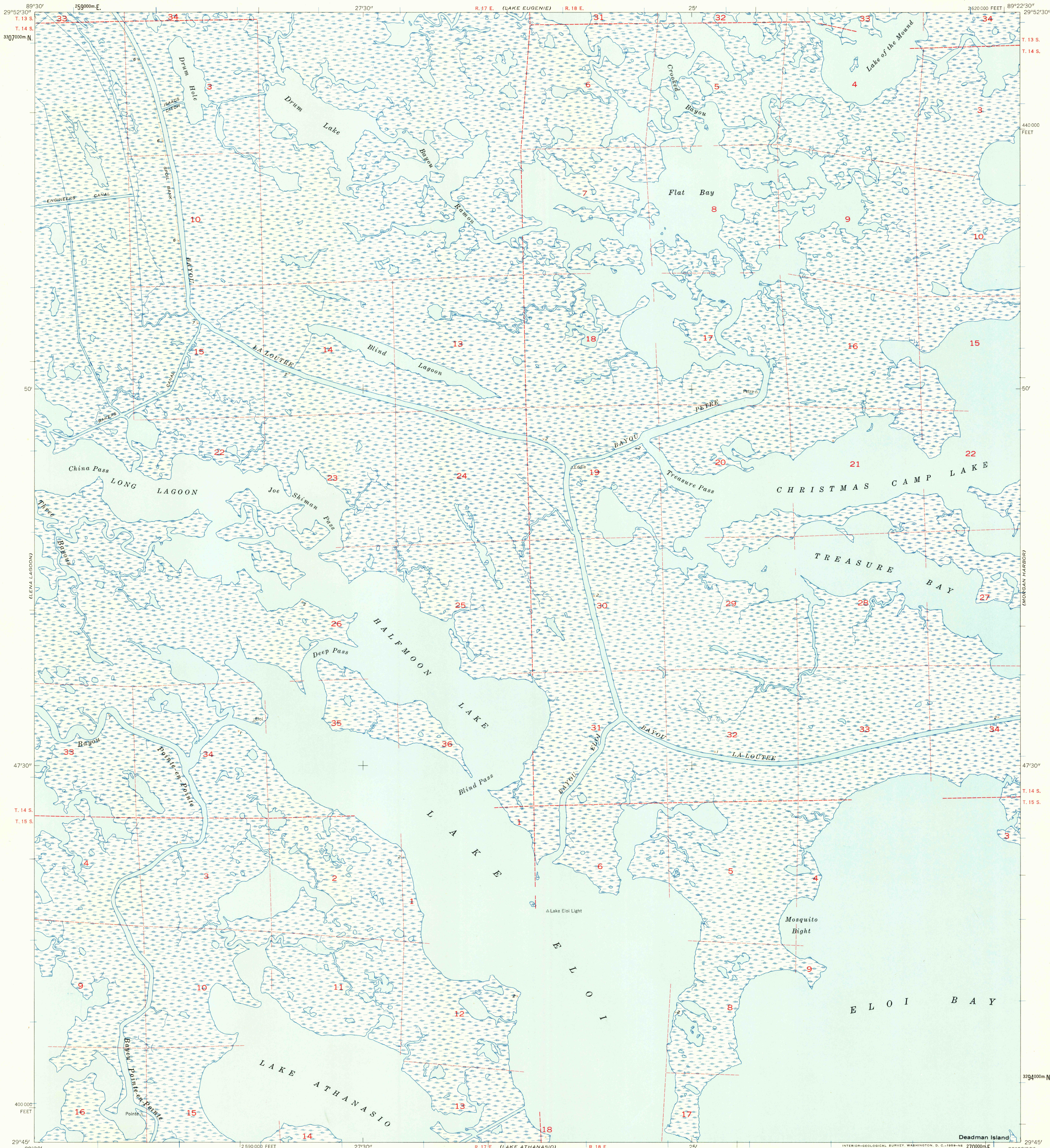


UNITED STATES
DEPARTMENT OF THE INTERIOR
GEOLOGICAL SURVEY

UNITED STATES
DEPARTMENT OF COMMERCE
COAST AND GEODETIC SURVEY

LAKE ELOI QUADRANGLE
LOUISIANA—ST. BERNARD PARISH
7.5 MINUTE SERIES (TOPOGRAPHIC)



Maped by U. S. Coast and Geodetic Survey
Edited and published by the Geological Survey
Control by USC&GS

Culture and drainage in part compiled from aerial photographs
taken 1952. Topography by planetable surveys 1952
Field check 1955

Polyconic projection. 1927 North American datum
10,000-foot grid based on Louisiana coordinate system, south zone
1000-meter Universal Transverse Mercator grid ticks,
zone 16, shown in blue

Land lines added from USGS Lake Eloi 7.5 minute quadrangle
Dashed land lines indicate approximate locations
Certain land lines unsurveyed in T. 13 S.-R. 17 E., and T. 14 S.-R. 17 E.

TRUE NORTH
MAGNETIC NORTH
APPROXIMATE MEAN
DECLINATION, 1955

SCALE 1:24000
1 000 0 1000 2000 3000 4000 5000 6000 7000 FEET
1 5 0 1 KILOMETER

ENTIRE AREA, EXCEPT SPOIL BANKS, IS LESS THAN 5 FEET ABOVE MEAN SEA LEVEL
DATUM IS MEAN SEA LEVEL
SHORELINE SHOWN REPRESENTS THE APPROXIMATE LINE OF MEAN HIGH WATER
THE MEAN RANGE OF TIDE IS LESS THAN 1/2 FOOT

THIS MAP COMPLIES WITH NATIONAL MAP ACCURACY STANDARDS
FOR SALE BY U. S. GEOLOGICAL SURVEY, DENVER 2, COLORADO OR WASHINGTON 25, D. C.
AND BY THE STATE OF LOUISIANA, DEPARTMENT OF PUBLIC WORKS, BATON ROUGE 4, LOUISIANA
A FOLDER DESCRIBING TOPOGRAPHIC MAPS AND SYMBOLS IS AVAILABLE ON REQUEST

USGS
Historical File
Topographic Division



U.S.G.S.
FILE COPY
TOPOGRAPHIC DIVISION

ROAD CLASSIFICATION
No roads or trails in this area

LAKE ELOI, LA.
N 2945—W 8922.5/7.5

1955

1875