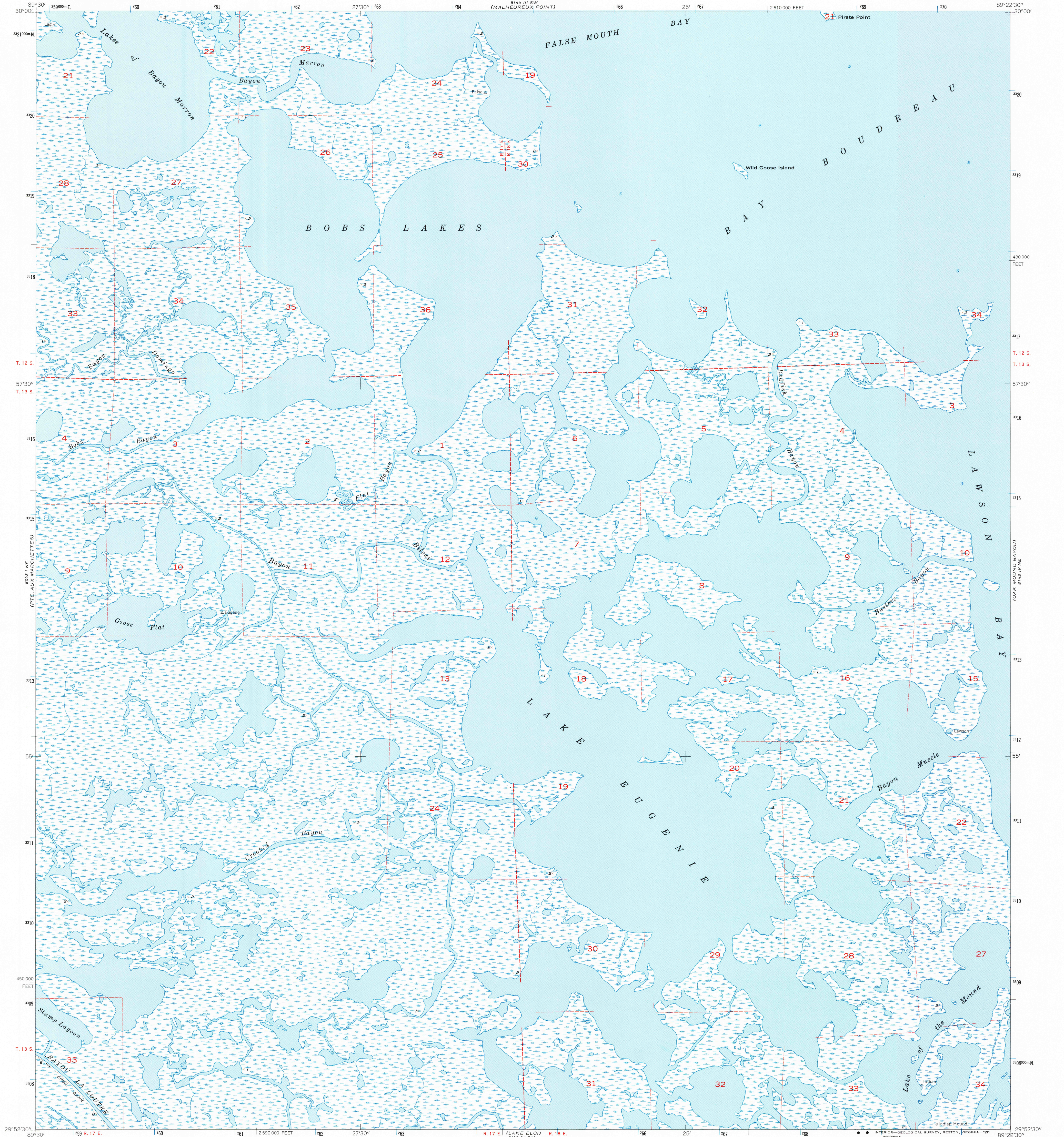


UNITED STATES
DEPARTMENT OF THE INTERIOR
GEOLOGICAL SURVEY

UNITED STATES
DEPARTMENT OF COMMERCE
COAST AND GEODETIC SURVEY

LAKE EUGENIE QUADRANGLE
LOUISIANA—ST. BERNARD PARISH
7.5 MINUTE SERIES (TOPOGRAPHIC)



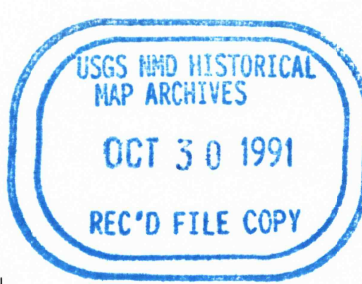
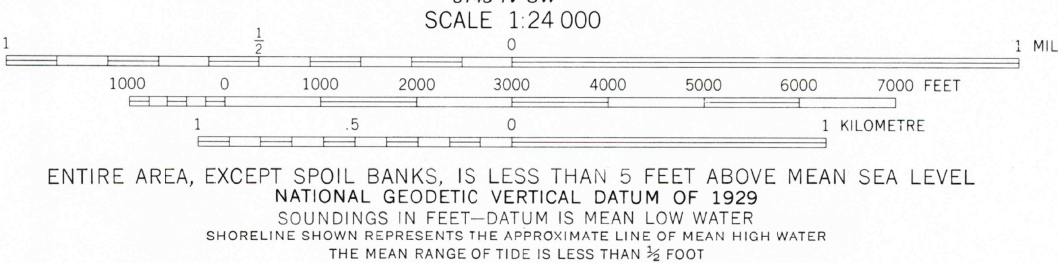
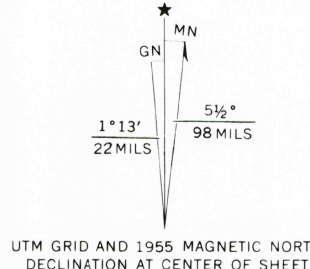
Mapped by U. S. Coast and Geodetic Survey
Edited and published by the Geological Survey
Control by USC&GS

Culture and drainage in part compiled from aerial photographs
taken 1952. Topography by planetable surveys 1952
Field check 1955

Hydrography compiled from USC&GS chart 1270 (1956)
Polyconic projection. 1927 North American datum
10,000-foot grid based on Louisiana coordinate system, south zone
1000-metre Universal Transverse Mercator grid ticks,
zone 16, shown in blue

Land lines added from USGS Lake Eugene 7.5 minute quadrangle
Dashed land lines indicate approximate locations
Certain land lines unsurveyed in T. 13 S.—R. 17 E.

Map photinspected 1989
No major culture or drainage changes observed



ROAD CLASSIFICATION
No roads or trails in this area

LAKE EUGENIE, LA.
29089-H4-TF-024

1955
PHOTOINSPECTED 1989
DMA 8143 IV NW—SERIES Y885

The difference between 1927 North American Datum and North American Datum of 1983 (NAD 83) for 7.5-minute intersections is given in USGS Bulletin 1875. The NAD 83 is shown by dashed corner ticks