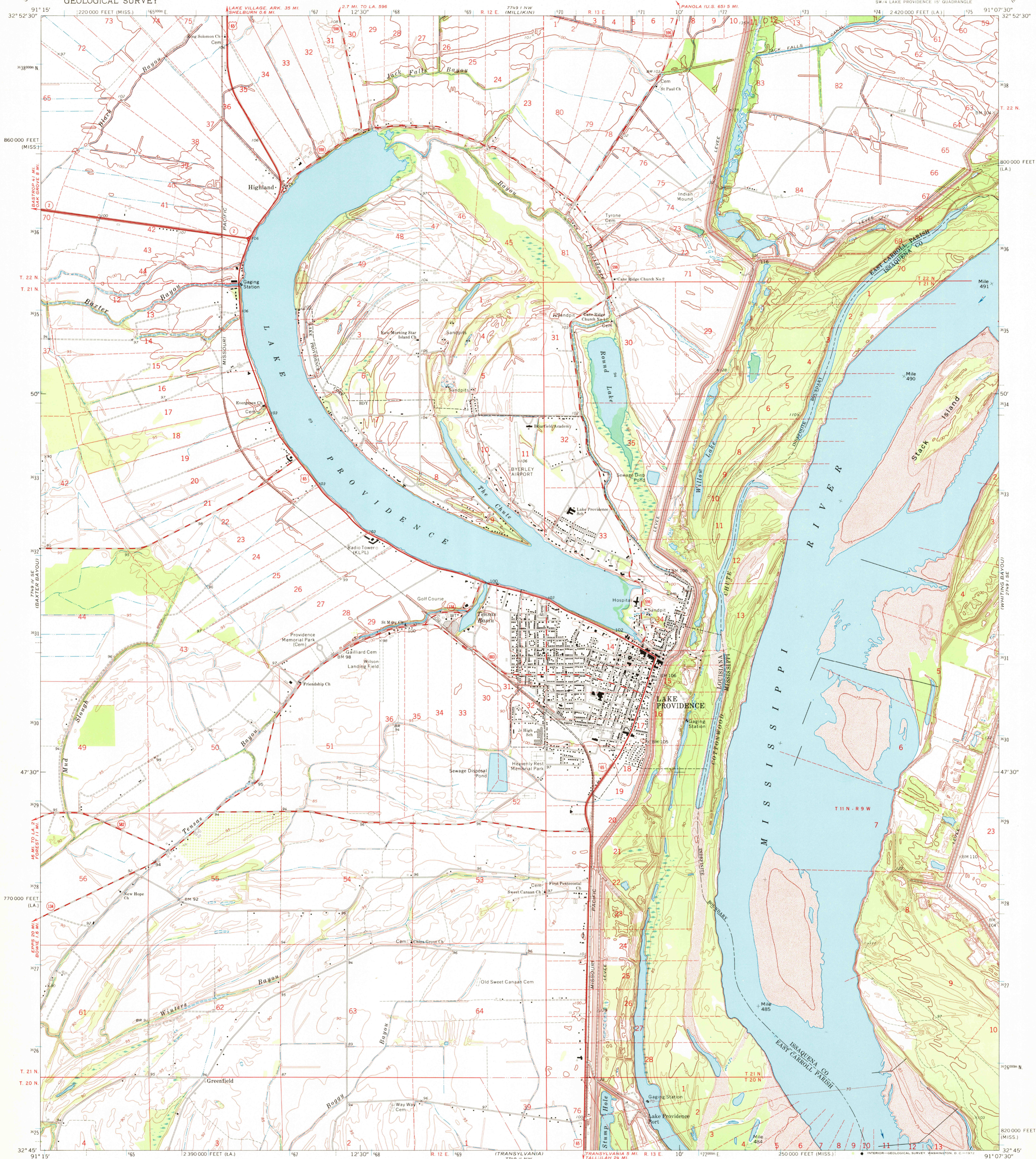


UNITED STATES  
DEPARTMENT OF THE INTERIOR  
GEOLOGICAL SURVEY

LAKE PROVIDENCE QUADRANGLE  
LOUISIANA—MISSISSIPPI  
7.5 MINUTE SERIES (TOPOGRAPHIC)  
SW 4 LAKE PROVIDENCE 15' QUADRANGLE



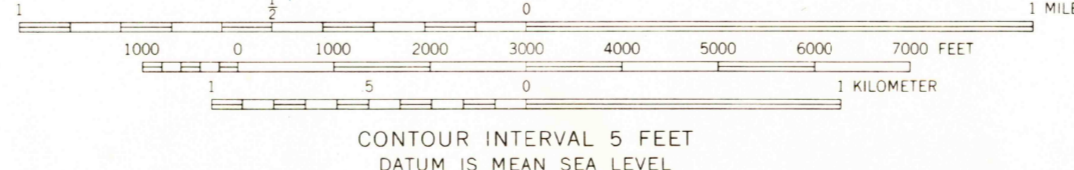
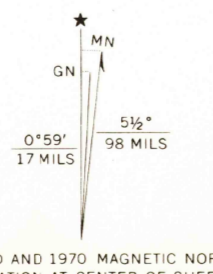
Mapped, edited, and published by the Geological Survey

Control by USGS and USC&GS

Topography by photogrammetric methods from aerial photographs taken 1967. Field checked 1970  
Supersedes map dated 1909

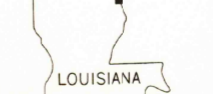
Polyconic projection. 1927 North American datum  
10,000-foot grids based on Louisiana coordinate system, north zone and Mississippi coordinate system, west zone  
1000-meter Universal Transverse Mercator grid ticks, zone 15, shown in blue

Fine red dashed lines indicate selected fence and field lines where generally visible on aerial photographs. This information is unchecked



THIS MAP COMPLIES WITH NATIONAL MAP ACCURACY STANDARDS  
FOR SALE BY U.S. GEOLOGICAL SURVEY, DENVER, COLORADO 80225, OR WASHINGTON, D. C. 20242  
AND BY THE STATE OF LOUISIANA, DEPARTMENT OF PUBLIC WORKS, BATON ROUGE, LOUISIANA 70804  
A FOLDER DESCRIBING TOPOGRAPHIC MAPS AND SYMBOLS IS AVAILABLE ON REQUEST

ROAD CLASSIFICATION  
Primary highway, all weather, hard surface  
Secondary highway, all weather, hard surface  
Light-duty road, all weather, improved surface  
Unimproved road, fair or dry weather  
U. S. Route  
State Route



USGS  
HISTORICAL FILE  
TOPOGRAPHIC DIVISION

LAKE PROVIDENCE, LA.—MISS.  
SW 4 LAKE PROVIDENCE 15' QUADRANGLE  
N3245—W9107.5/7.5  
1970

AMS 7749 I SW—SERIES V885