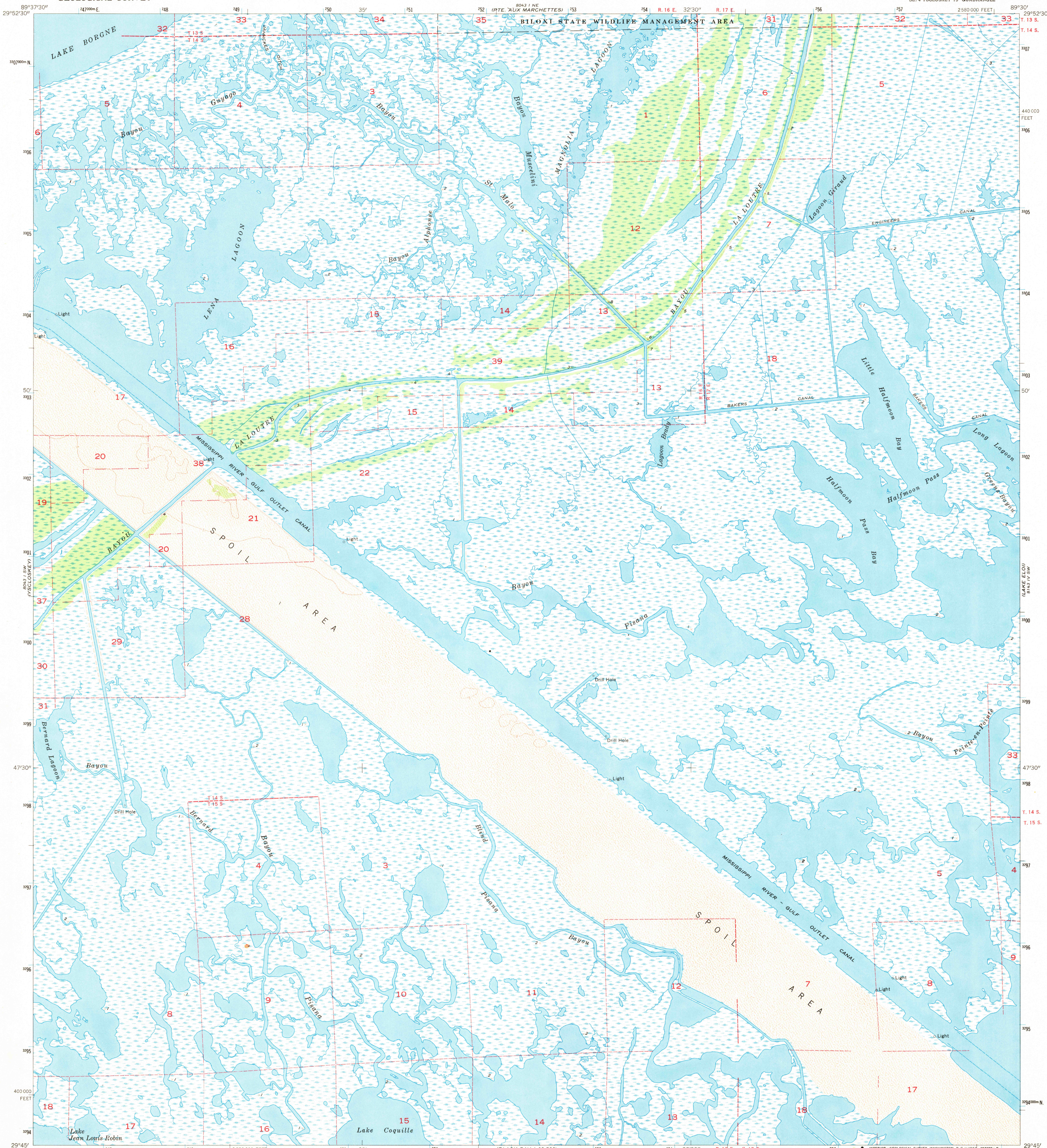


UNITED STATES
DEPARTMENT OF THE INTERIOR
GEOLOGICAL SURVEY

LENA LAGOON QUADRANGLE
LOUISIANA—ST. BERNARD PARISH
7.5 MINUTE SERIES (TOPOGRAPHIC)
SE 1/4 YSCLOSKEY 15' QUADRANGLE

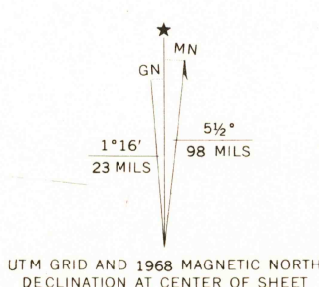


Mapped by U.S. Coast and Geodetic Survey
Edited and published by the Geological Survey
Control by USC&GS

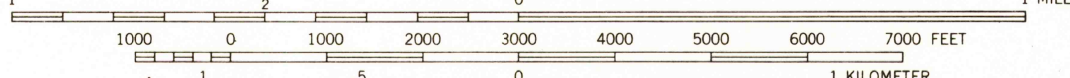
Planimetry by photogrammetric methods from aerial photographs
taken 1952. Topography by planetable surveys 1952 and 1955
Revised by the Geological Survey 1968
Selected hydrographic data compiled from USC&GS Chart 1271 (1966)
This information is not intended for navigational purposes

Polyconic projection. 1927 North American datum
10,000-foot grid based on Louisiana coordinate system, south zone
1000-meter Universal Transverse Mercator grid ticks,
zone 16, shown in blue

Where omitted, land lines have not been established
or are not shown because of insufficient data
All or part of this quadrangle lies within a subsidence area



SCALE 1:24,000



CONTOUR INTERVAL 5 FEET
DATUM IS MEAN SEA LEVEL

SHORELINE SHOWN REPRESENTS THE APPROXIMATE LINE OF MEAN HIGH WATER
THE MEAN RANGE OF TIDE IS APPROXIMATELY 1 FOOT

THIS MAP COMPLIES WITH NATIONAL MAP ACCURACY STANDARDS
FOR SALE BY U.S. GEOLOGICAL SURVEY, DENVER, COLORADO 80225, OR WASHINGTON, D.C. 20242
AND BY THE STATE OF LOUISIANA, DEPARTMENT OF PUBLIC WORKS, BATON ROUGE, LOUISIANA 70804
A FOLDER DESCRIBING TOPOGRAPHIC MAPS AND SYMBOLS IS AVAILABLE ON REQUEST

USGS
Historical File
Topographic Division



U.S.G.S.

FILE COPY
TOPOGRAPHIC DIVISION

ROAD CLASSIFICATION
No roads or trails in this area

LENA LAGOON, LA.
SE 1/4 YSCLOSKEY 15' QUADRANGLE
N2945-W8930/7.5

1968

AMS 8043 I SE—SERIES V885

JUL 10 1969