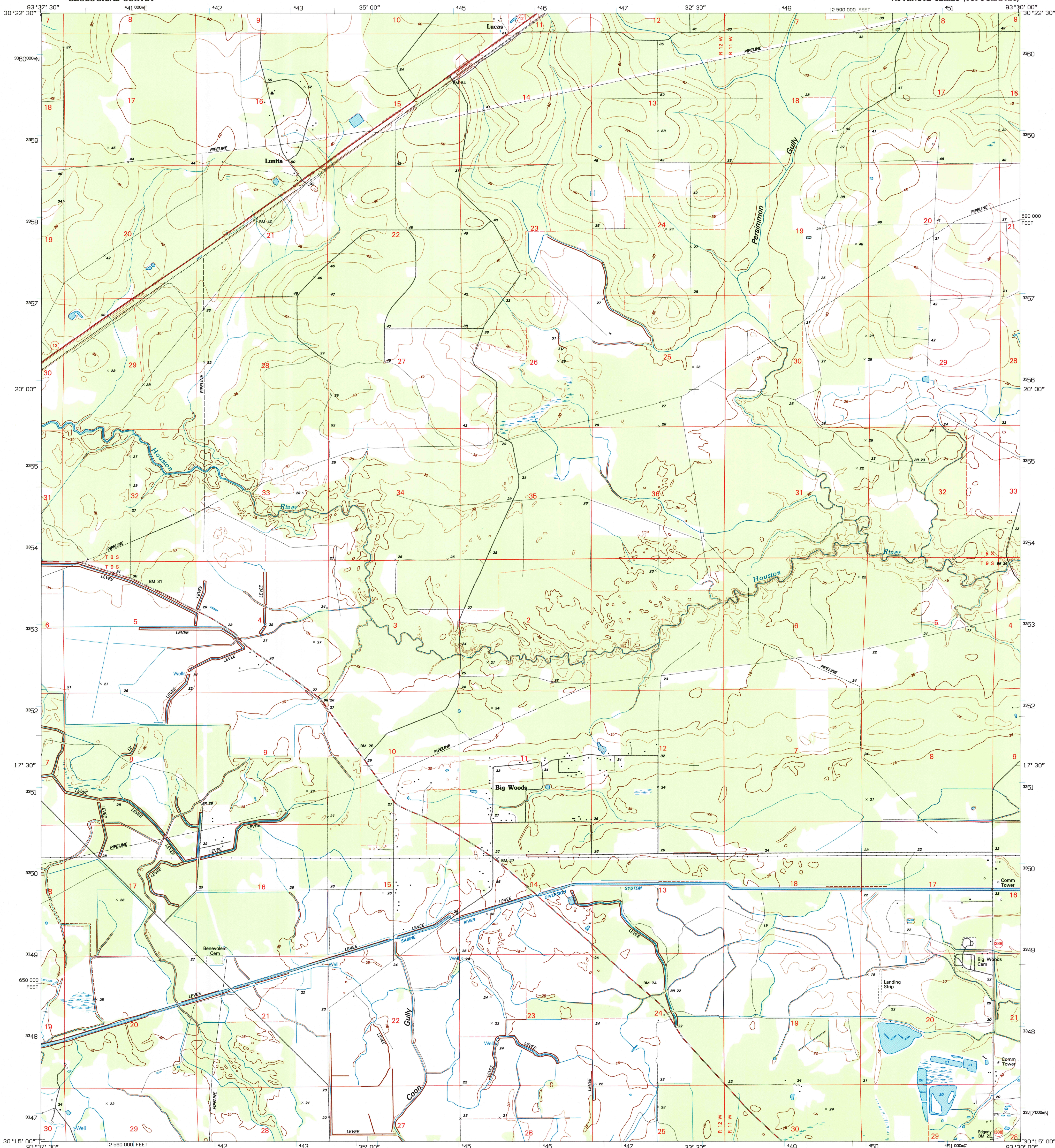
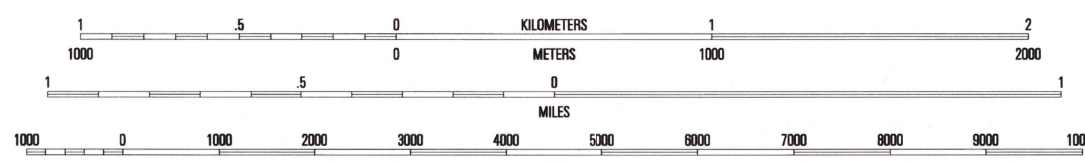
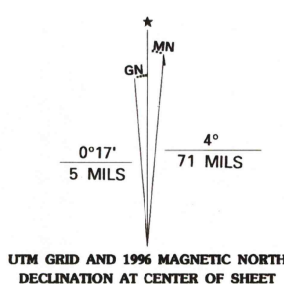


UNITED STATES  
DEPARTMENT OF THE INTERIOR  
GEOLOGICAL SURVEY

LUNITA QUADRANGLE  
LOUISIANA-CALCASIEU PARISH  
7.5-MINUTE SERIES (TOPOGRAPHIC)



Produced by the United States Geological Survey  
in cooperation with State of Louisiana agencies  
Compiled by photogrammetric methods from imagery dated 1976  
Field checked 1978. Revised from imagery dated 1994  
PLSS and survey control current as of 1976. Map edited 1996  
Contours not revised  
North American Datum of 1983 (NAD 83). Projection and  
blue 1000-meter ticks: Universal Transverse Mercator, zone 15  
10 000-foot ticks: Louisiana Coordinate System of 1983 (south zone)  
North American Datum of 1927 (NAD 27) is shown by dashed  
corner ticks. The values of the shift between NAD 83 and NAD 27  
for 7.5-minute intersections are obtainable from National Geodetic  
Survey NADCON software



CONTOUR INTERVAL 5 FEET  
NATIONAL GEODETIC VERTICAL DATUM OF 1929

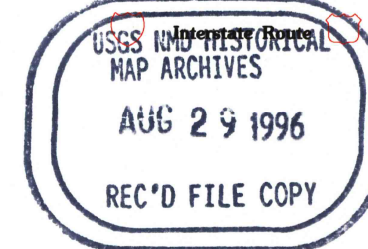
THIS MAP COMPLIES WITH NATIONAL MAP ACCURACY STANDARDS  
FOR SALE BY U.S. GEOLOGICAL SURVEY, DENVER, COLORADO 80225, OR RESTON, VIRGINIA 22092  
AND LOUISIANA DEPARTMENT OF TRANSPORTATION AND DEVELOPMENT, BATON ROUGE, LOUISIANA 70804  
A FOLDER DESCRIBING TOPOGRAPHIC MAPS AND SYMBOLS IS AVAILABLE ON REQUEST



1	2	3	1 Shoats Creek
4	5	4 Starks	2 Clark Hollow
6	7	5 Brimstone	3 De Quency
8	8 Sulphur	6 Echo	4 Starks
		7 Vinton	5 Brimstone
		8 Sulphur	6 Echo

ADJOINING 7.5' QUADRANGLE NAMES

ROAD CLASSIFICATION  
Primary highway  
hard surface .....  
Secondary highway  
hard surface .....  
Light-duty road, hard or  
improved surface .....  
Unimproved road .....  
U.S. Route .....  
State Route .....



LUNITA, LA  
30093-C5-TF-024  
1994

DMA 7244 1 SE-SERIES V885

