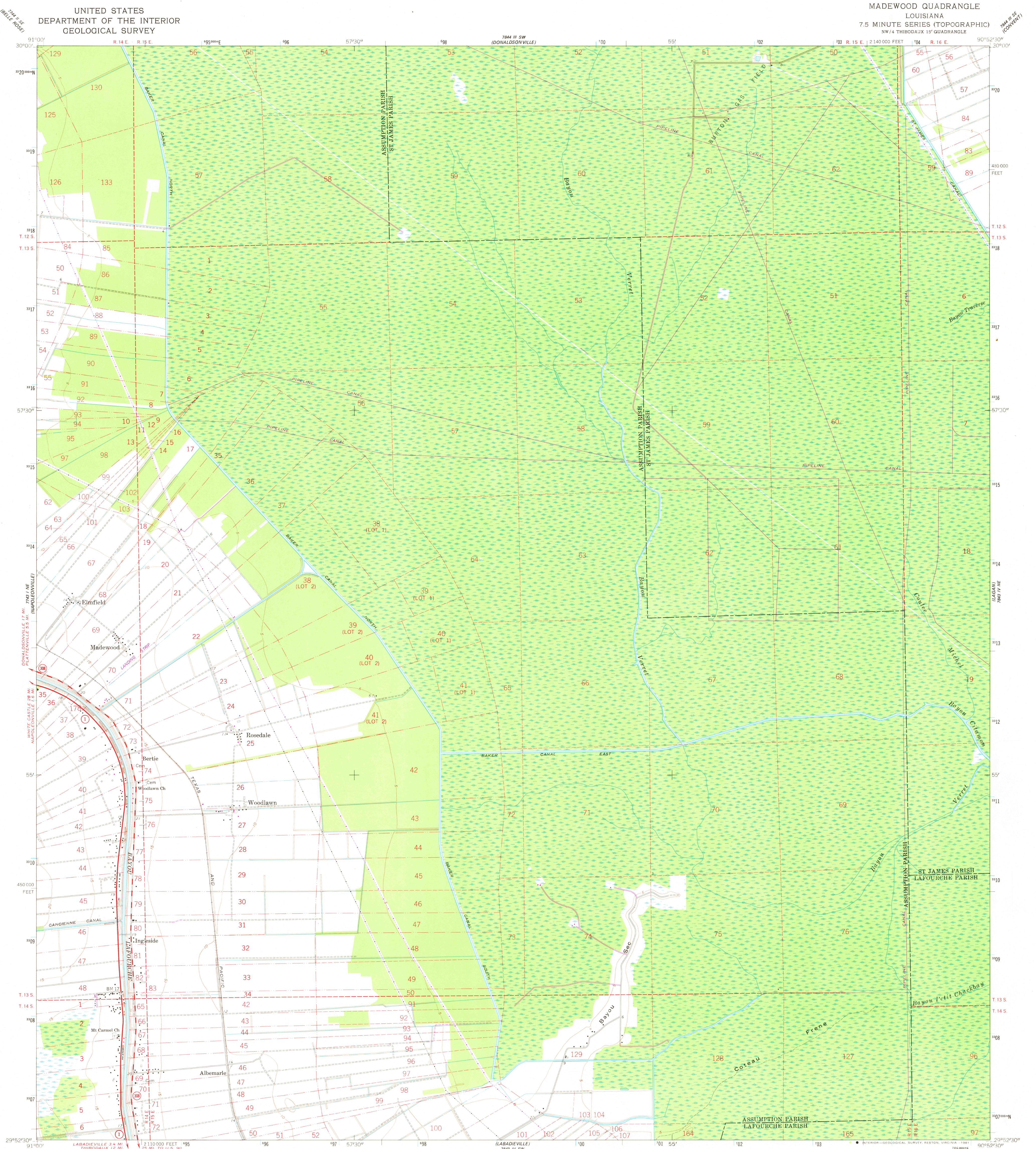


UNITED STATES
DEPARTMENT OF THE INTERIOR
GEOLOGICAL SURVEY

MADEWOOD QUADRANGLE
LOUISIANA
7.5 MINUTE SERIES (TOPOGRAPHIC)
NW 1/4 THIBODAUX 15' QUADRANGLE



Maped, edited, and published by the Geological Survey
Control by USGS and USC&GS
Planimetry by photogrammetric methods from aerial photographs
taken 1961. Topography by planetable surveys 1938
Revised 1962
Polyconic projection. 1927 North American datum
10,000-foot grid based on Louisiana coordinate system, south zone
1000-meter Universal Transverse Mercator grid ticks,
zone 15, shown in blue
To place on the predicted North American Datum 1983
move the projection lines 19 meters south and
10 meters east as shown by dashed corner ticks
All or part of this quadrangle lies within a subsidence area
Revisions shown in purple and woodland compiled from
aerial photographs taken 1978. Map edited 1980
This information not field checked

SCALE 1:24 000
1 0 1000 2000 3000 4000 5000 6000 7000 FEET
1 0 1 2 3 4 5 6 7 8 9 10 KILOMETER
CONTOUR INTERVAL 5 FEET
NATIONAL GEODETIC VERTICAL DATUM OF 1929

ROAD CLASSIFICATION
Heavy-duty ——— Light-duty ———
Medium-duty ——— Unimproved dirt ———
State Route ○

USGS
Historical File
National Mapping Div.

MADEWOOD, LA.
NW 1/4 THIBODAUX 15' QUADRANGLE
N 2952.5 - W 9052.5 / 7.5
1962
PHOTOREVISED 1980
DMA 7843 IV NW - SERIES V885

2400
MAY 5 1981