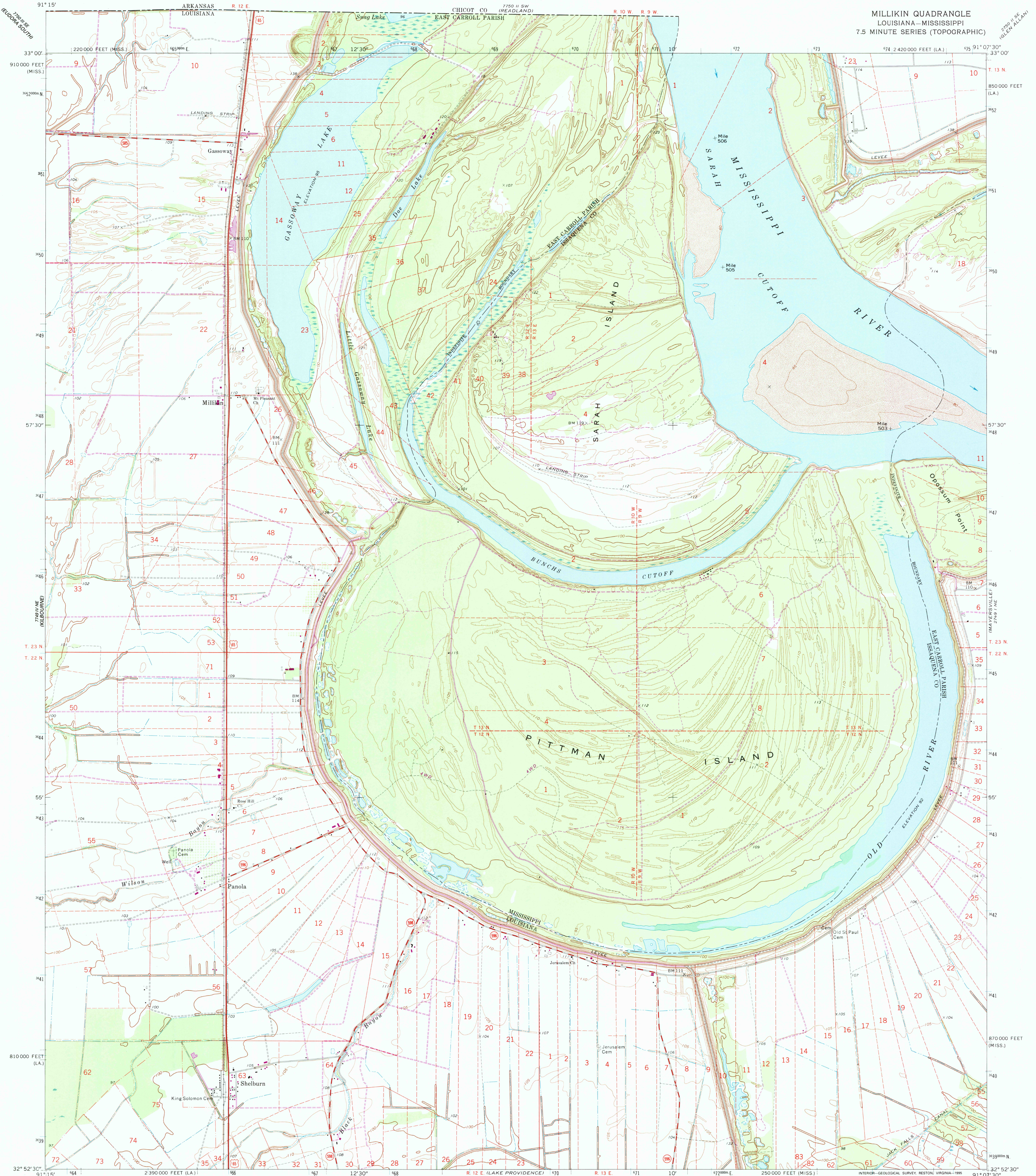
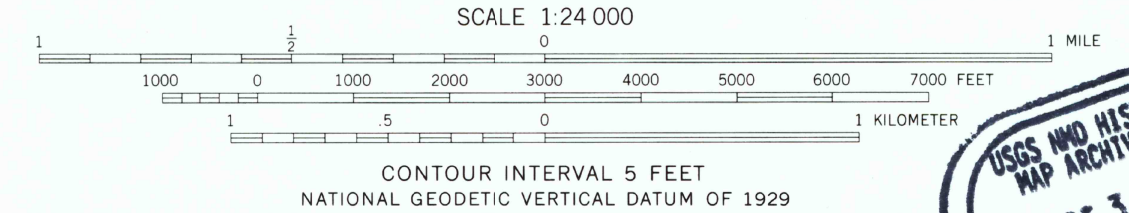
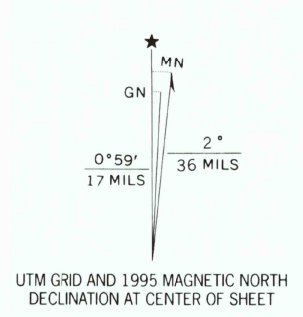


UNITED STATES  
DEPARTMENT OF THE INTERIOR  
GEOLOGICAL SURVEY

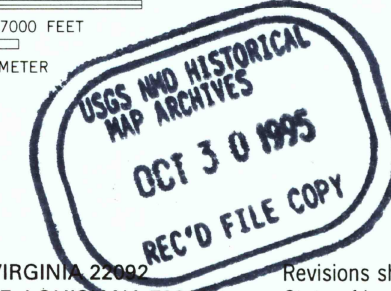
MILLIKIN QUADRANGLE  
LOUISIANA—MISSISSIPPI  
7.5 MINUTE SERIES (TOPOGRAPHIC)



Produced by the United States Geological Survey  
Compiled by photogrammetric methods from imagery dated 1967  
Field checked 1970  
North American Datum of 1927 (NAD 27)  
Projection: Louisiana coordinate system, north zone  
(Lambert conformal conic)  
10 000-foot ticks: Louisiana coordinate system, north zone and  
Mississippi coordinate system, west zone  
Blue 1000-meter Universal Transverse Mercator ticks, zone 15  
North American Datum of 1983 (NAD 83) is shown by dashed  
corner ticks. The values of the shift between NAD 27 and NAD 83  
for 7.5-minute intersections are obtainable from National Geologic  
Survey NADCON software



SCALE 1:24 000  
CONTOUR INTERVAL 5 FEET  
NATIONAL GEODETIC VERTICAL DATUM OF 1929



ROAD CLASSIFICATION  
Primary highway, hard surface  
Secondary highway, hard surface  
Interstate Route  
U.S. Route  
State Route  
Light-duty road, hard or improved surface  
Unimproved road

THIS MAP COMPLIES WITH NATIONAL MAP ACCURACY STANDARDS  
FOR SALE BY U.S. GEOLOGICAL SURVEY, DENVER, COLORADO 80225, OR RESTON, VIRGINIA 22092  
AND LOUISIANA DEPARTMENT OF TRANSPORTATION AND DEVELOPMENT, BATON ROUGE, LOUISIANA 70804  
A FOLDER DESCRIBING TOPOGRAPHIC MAPS AND SYMBOLS IS AVAILABLE ON REQUEST



MILLIKIN, LA-MS  
32091-H2-TF-024  
1994  
DMA 7749 1 NW-SERIES V885

Revisions shown in purple compiled in cooperation with  
State of Louisiana agencies from imagery dated 1994  
and other sources. Map edited 1995  
Information shown in purple may not meet USGS content  
standards and may conflict with previously mapped contours

