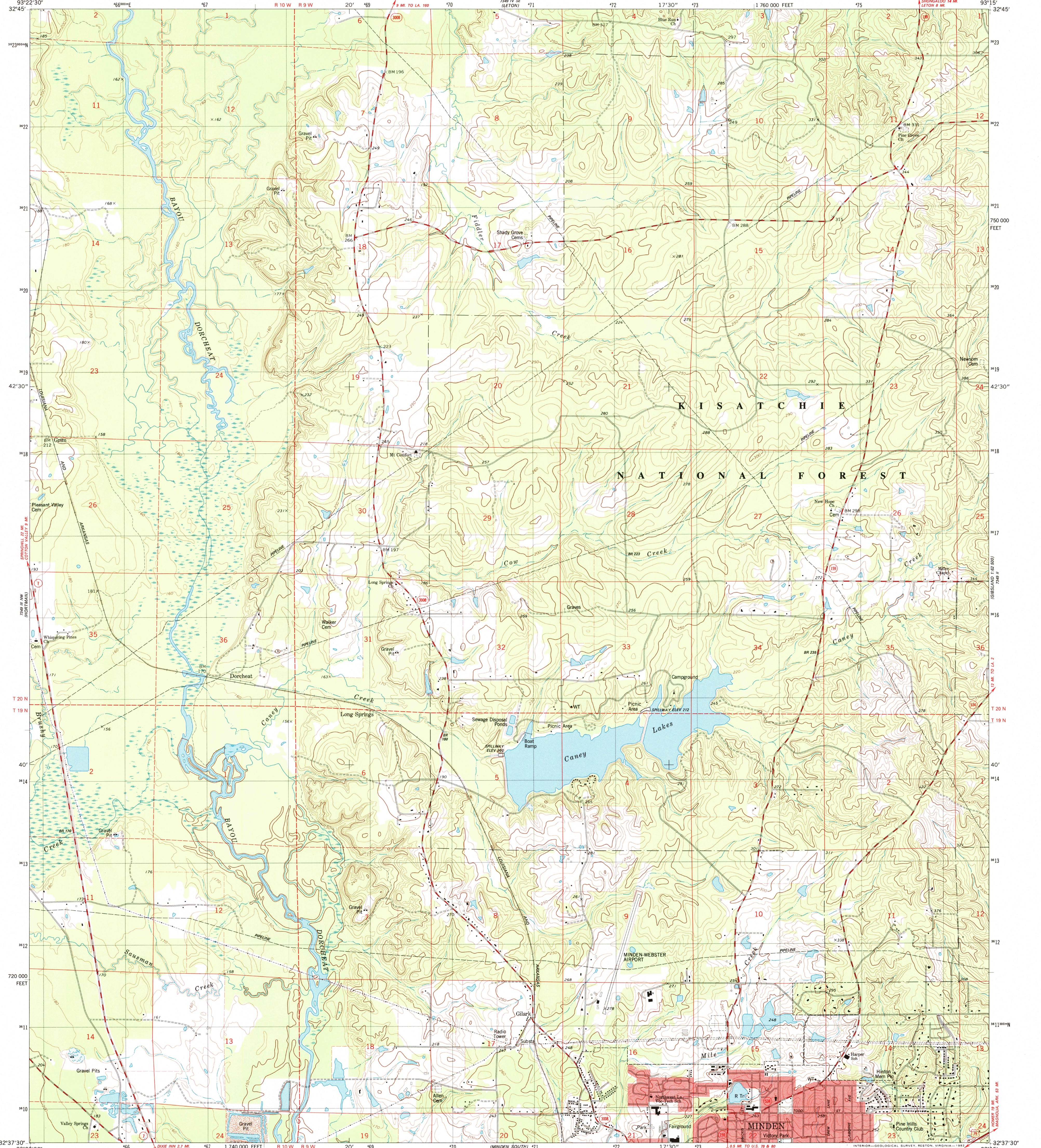


COYON LAKE

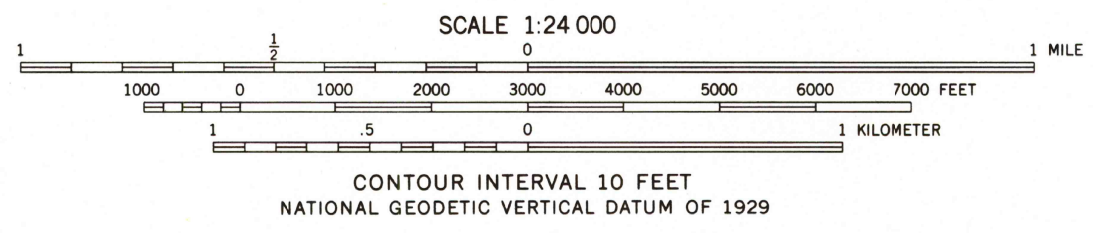
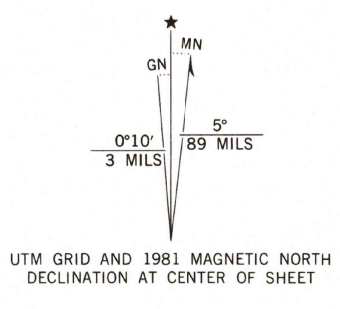
UNITED STATES
DEPARTMENT OF THE INTERIOR
GEOLOGICAL SURVEY

MINDEN NORTH QUADRANGLE
LOUISIANA—WEBSTER PARISH
7.5 MINUTE SERIES (TOPOGRAPHIC)

758
1:62,500
(NAD 83)



Mapped, edited, and published by the Geological Survey
Control by USGS and NOS/NOAA
Topography by photogrammetric methods from aerial photographs taken 1976. Field checked 1978. Map edited 1981
Projection and 10,000-foot grid ticks: Louisiana coordinate system, north zone (Lambert conformal conic)
1000-meter Universal Transverse Mercator grid, zone 15
1927 North American Datum
To place on the predicted North American Datum 1983 move the projection lines 12 meters south and 16 meters east as shown by dashed corner ticks
There may be private inholdings within the boundaries of the National or State reservations shown on this map
Red tint indicates areas in which only landmark buildings are shown
Fine red dashed lines indicate selected fence and field lines where generally visible on aerial photographs. This information is unchecked



SCALE 1:24 000
CONTOUR INTERVAL 10 FEET
NATIONAL GEODETIC VERTICAL DATUM OF 1929
THIS MAP COMPLIES WITH NATIONAL MAP ACCURACY STANDARDS
FOR SALE BY U. S. GEOLOGICAL SURVEY, DENVER, COLORADO 80225, OR RESTON, VIRGINIA 22092
AND STATE OF LOUISIANA, DEPARTMENT OF PUBLIC WORKS, BATON ROUGE, LOUISIANA 70804
A FOLDER DESCRIBING TOPOGRAPHIC MAPS AND SYMBOLS IS AVAILABLE ON REQUEST



ROAD CLASSIFICATION

Primary highway, hard surface	Light-duty road, hard or improved surface
Secondary highway, hard surface	Unimproved road
Interstate Route	U. S. Route
	State Route

RECEIVED
APR 30 1999
USGS NMD
HISTORICAL MAP ARCHIVES

MINDEN NORTH, LA.
NE/4 MINDEN 19 QUADRANGLE
N3237.5-W9315/7.5
1981
DMA 7349 III NE-SERIES 9885

