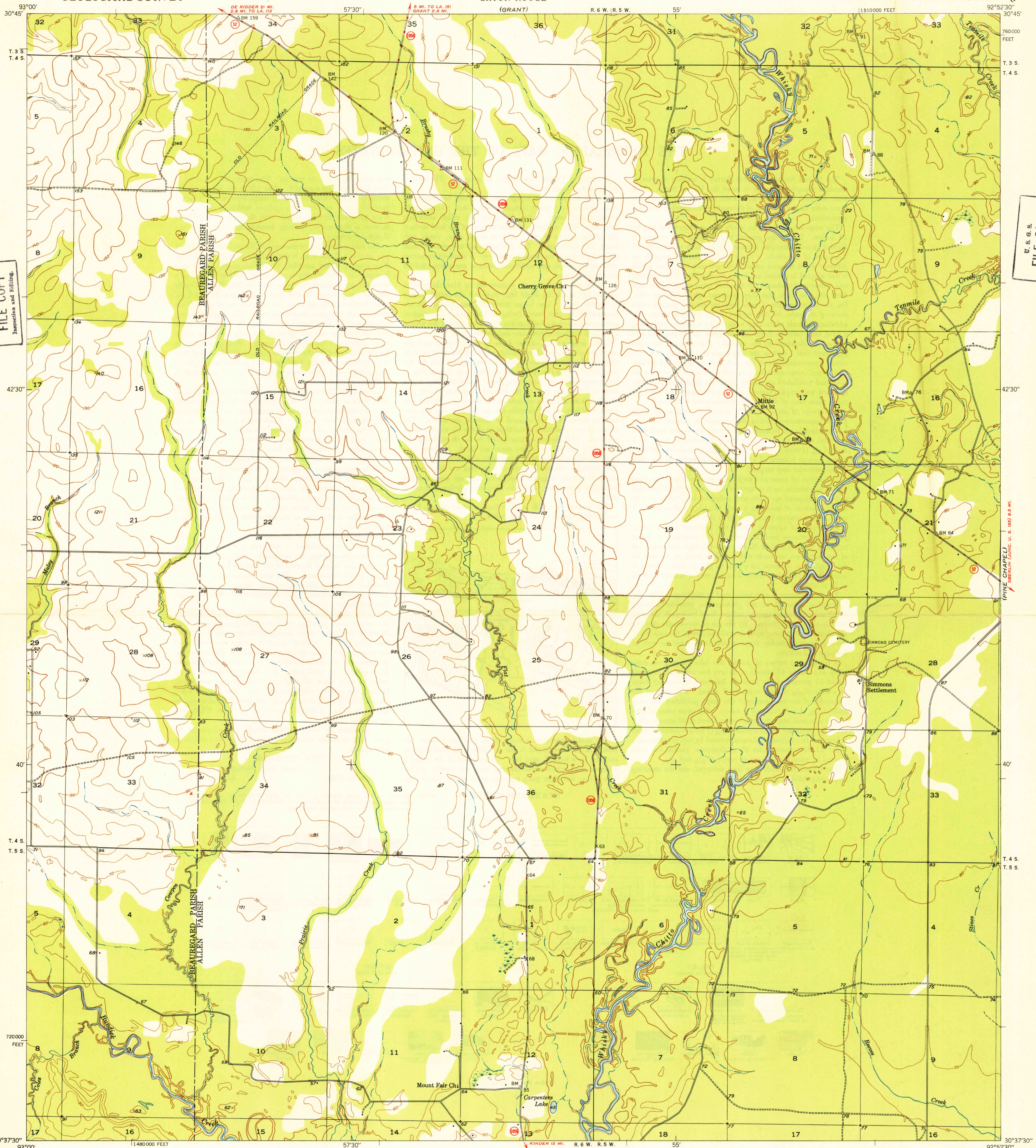


ELIZABETH



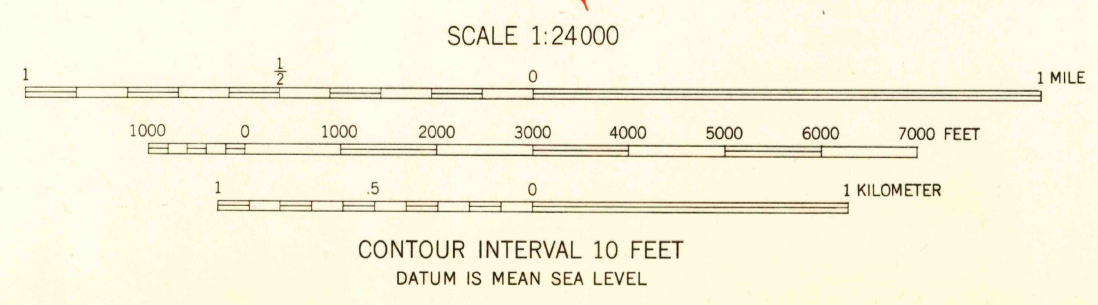
U. S. G. S.
FILE COPY
Inspection and Editing

U. S. G. S.
FILE COPY
Inspection and Editing

(PINE CHAPEL)
CORRECTION (CONC. U. S. G. 1953) 8.5 MI.

Mapped, edited, and published by the Geological Survey
Control by USGS, USC&GS, C of E, USA and Louisiana Geodetic Survey
Topography by plane-table methods, 1945-1946-1947
Polyconic projection. 1927 North American datum
10 000-foot grid based on Louisiana coordinate system,
South zone

TRUE NORTH
MAGNETIC NORTH
APPROXIMATE MEAN
DECLINATION, 1947



CONTOUR INTERVAL 10 FEET
DATUM IS MEAN SEA LEVEL

THIS MAP COMPLIES WITH NATIONAL MAP ACCURACY STANDARDS

FOR SALE BY U. S. GEOLOGICAL SURVEY, WASHINGTON 25, D. C.

USGS
Historical File
Topographic Division

ROAD CLASSIFICATION
HARD-SURFACE ALL WEATHER ROADS DRY WEATHER ROADS
Heavy-duty LANE LANE Improved dirt
Medium-duty LANE LANE Unimproved dirt
Loose-surface or narrow hard-surface
U. S. Route State Route

U. S. G. S.
FILE COPY
Inspection and Editing
(2120)

MITTIE, LA.
N 3037.5-W 9252.5/7.5
PRINTED 1948