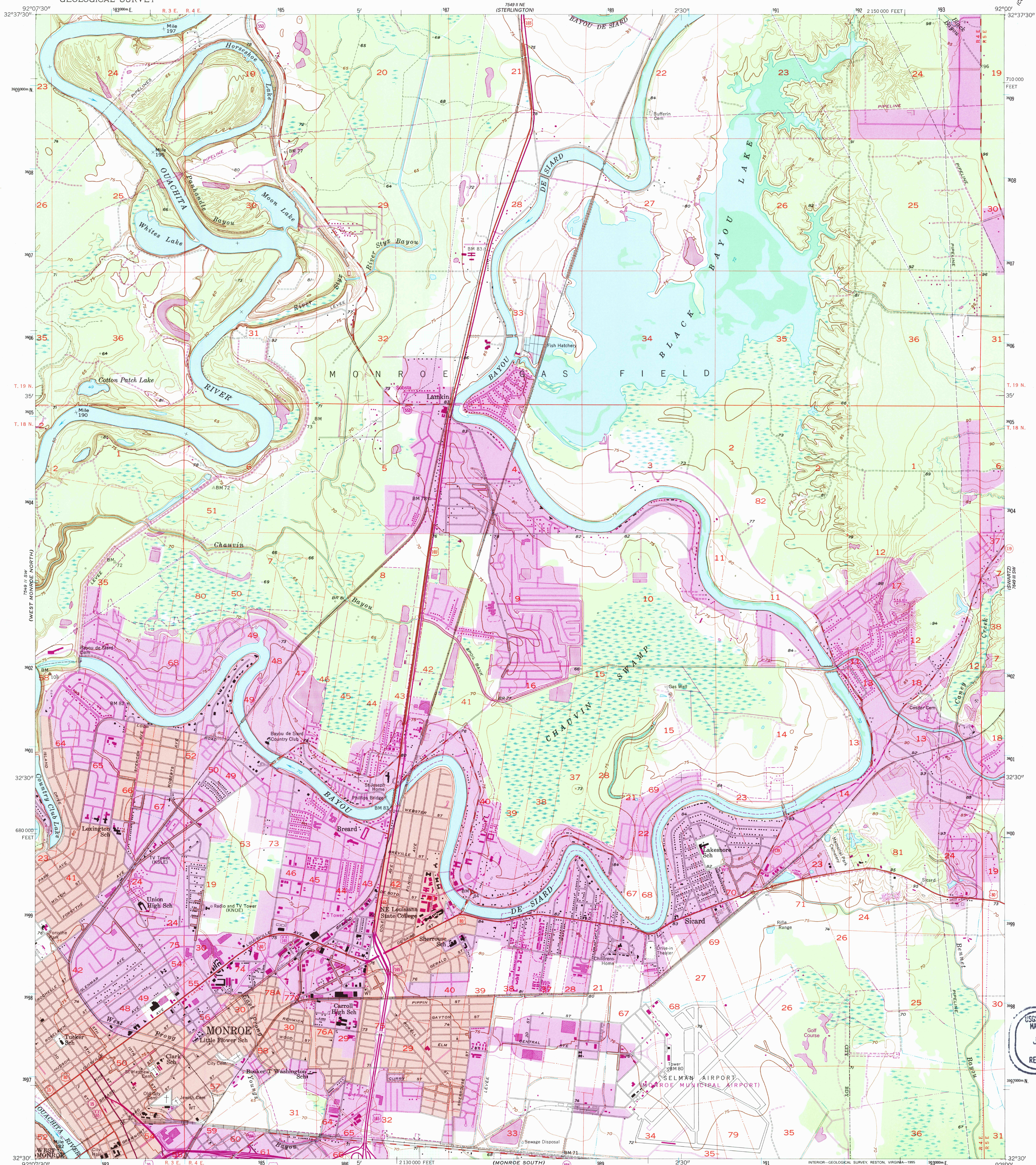
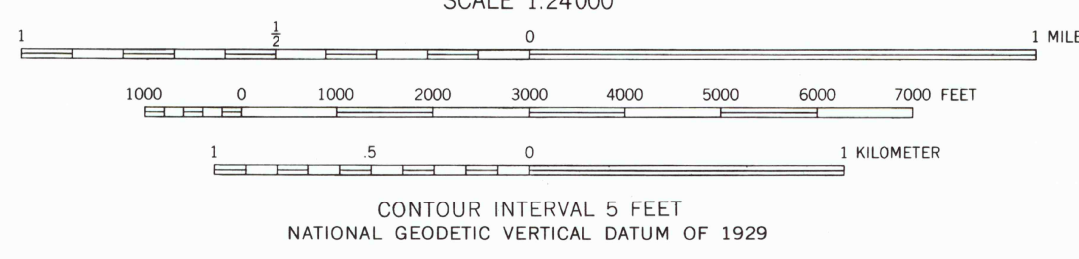
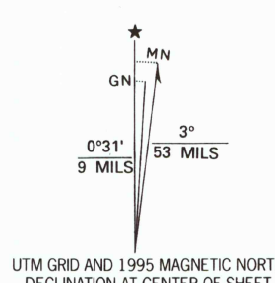


UNITED STATES
DEPARTMENT OF THE INTERIOR
GEOLOGICAL SURVEY

MONROE NORTH QUADRANGLE
LOUISIANA—OUACHITA PARISH
7.5 MINUTE SERIES (TOPOGRAPHIC)



Produced by the United States Geological Survey
Planimetry by photogrammetric methods from imagery dated 1956
Topography by planetable surveys 1957. Revised from imagery dated 1969 and 1975
North American Datum of 1927 (NAD 27). Projection and 10 000-foot ticks: Louisiana coordinate system, north zone (Lambert conformal conic)
Blue 1000-meter Universal Transverse Mercator ticks, zone 15
North American Datum of 1983 (NAD 83) is shown by dashed corner ticks. The values of the shift between NAD 27 and NAD 83 for 7.5-minute intersections are obtainable from National Geodetic Survey NADCON software



THIS MAP COMPLIES WITH NATIONAL MAP ACCURACY STANDARDS
FOR SALE BY U.S. GEOLOGICAL SURVEY, DENVER, COLORADO 80225, OR RESTON, VIRGINIA 22092
AND LOUISIANA DEPARTMENT OF TRANSPORTATION AND DEVELOPMENT, BATON ROUGE, LOUISIANA 70804
A FOLDER DESCRIBING TOPOGRAPHIC MAPS AND SYMBOLS IS AVAILABLE ON REQUEST



Revisions shown in purple compiled in cooperation with State of Louisiana agencies from imagery dated 1994 and other sources. Map edited 1995
Information shown in purple may not meet USGS content standards and may conflict with previously mapped contours

ROAD CLASSIFICATION
Primary highway, hard surface
Secondary highway, hard surface
Interstate Route
Light-duty road, hard or improved surface
Unimproved road
U. S. Route
State Route

MONROE NORTH, LA
32092-E1-TF-024

1994
DMA 7549 II SE-SERIES V885

USGS NHD HISTORIC MAP ARCHIVES
JAN 9 1994
REC'D FILE C1

