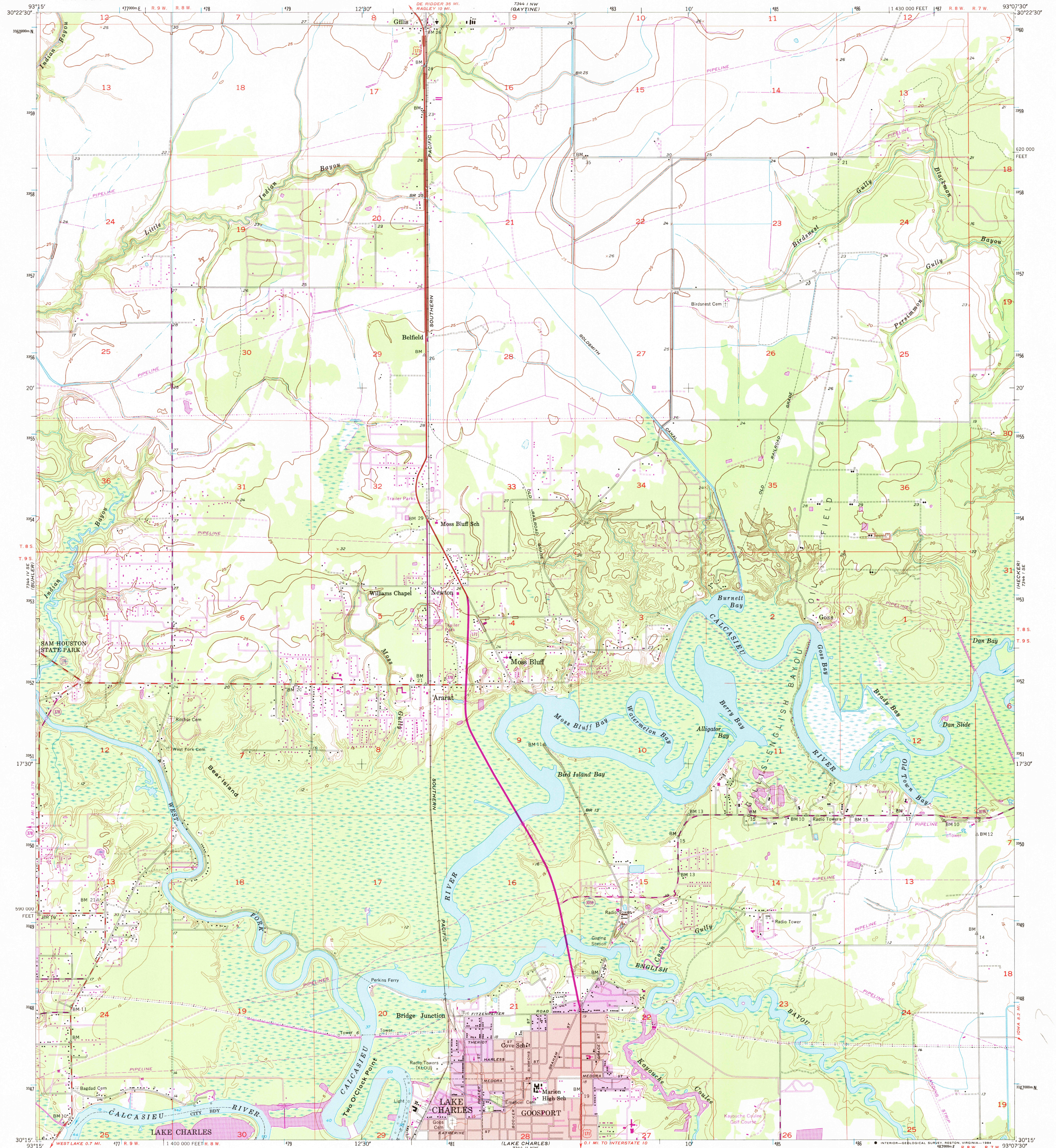


7344 N.W. (GORDON)

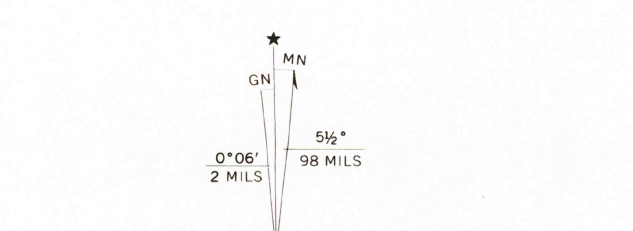
UNITED STATES
DEPARTMENT OF THE INTERIOR
GEOLOGICAL SURVEY

MOSS BLUFF QUADRANGLE
LOUISIANA-CALCASIEU PARISH
7.5 MINUTE SERIES (TOPOGRAPHIC)
SW/4 MOSS BLUFF 15' QUADRANGLE



Mapped, edited, and published by the Geological Survey
Control by USGS, USC&GS, and Louisiana Geodetic Survey
Culture and drainage in part compiled from aerial photographs
taken 1953-1954. Topography by planetable surveys 1955
Hydrography from USC&GS chart 592 (1:40,000)
Polyconic projection. 1927 North American datum
10,000-foot grid based on Louisiana coordinate system,
south zone

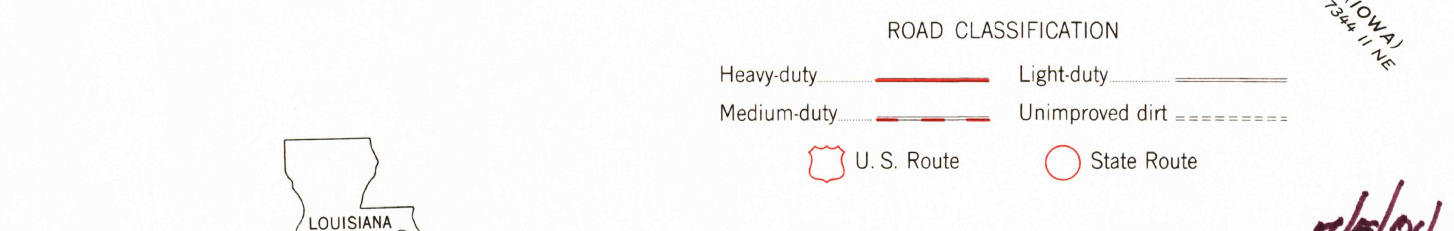
Red tint indicates area in which only landmark buildings are shown
1000-metre Universal Transverse Mercator grid ticks,
zone 15, shown in blue
Revisions shown in purple compiled in cooperation with
Louisiana Department of Public Works from aerial photographs
taken 1967 and 1975. This information not field checked
Purple tint indicates extension of urban areas



UTM GRID AND 1975 MAGNETIC NORTH
DECLINATION AT CENTER OF SHEET
To place on the North American Datum 1983,
move the projection lines 18 meters south and
16 meters east as shown by dashed corner ticks
There may be private inholdings within the boundaries of
the National or State reservations shown on this map

SCALE 1:24 000
1000 0 1000 2000 3000 4000 5000 6000 7000 FEET
1 KILOMETRE
CONTOUR INTERVAL 5 FEET
NATIONAL GEODETIC VERTICAL DATUM OF 1929
DEPTH CURVES AND SOUNDINGS IN FEET-DATUM IS MEAN LOW WATER

THIS MAP COMPLIES WITH NATIONAL MAP ACCURACY STANDARDS
FOR SALE BY U.S. GEOLOGICAL SURVEY, DENVER, COLORADO 80225, OR RESTON, VIRGINIA 22092
AND LOUISIANA DEPARTMENT OF PUBLIC WORKS, BATON ROUGE, LOUISIANA 70804
A FOLDER DESCRIBING TOPOGRAPHIC MAPS AND SYMBOLS IS AVAILABLE ON REQUEST



MOSS BLUFF, LA.
SW/4 MOSS BLUFF 15' QUADRANGLE
N3015-W9307.5/7.5
1955
PHOTOREVISED 1967 AND 1975
AMS 7344 I SW-SERIES V885

7/5/84