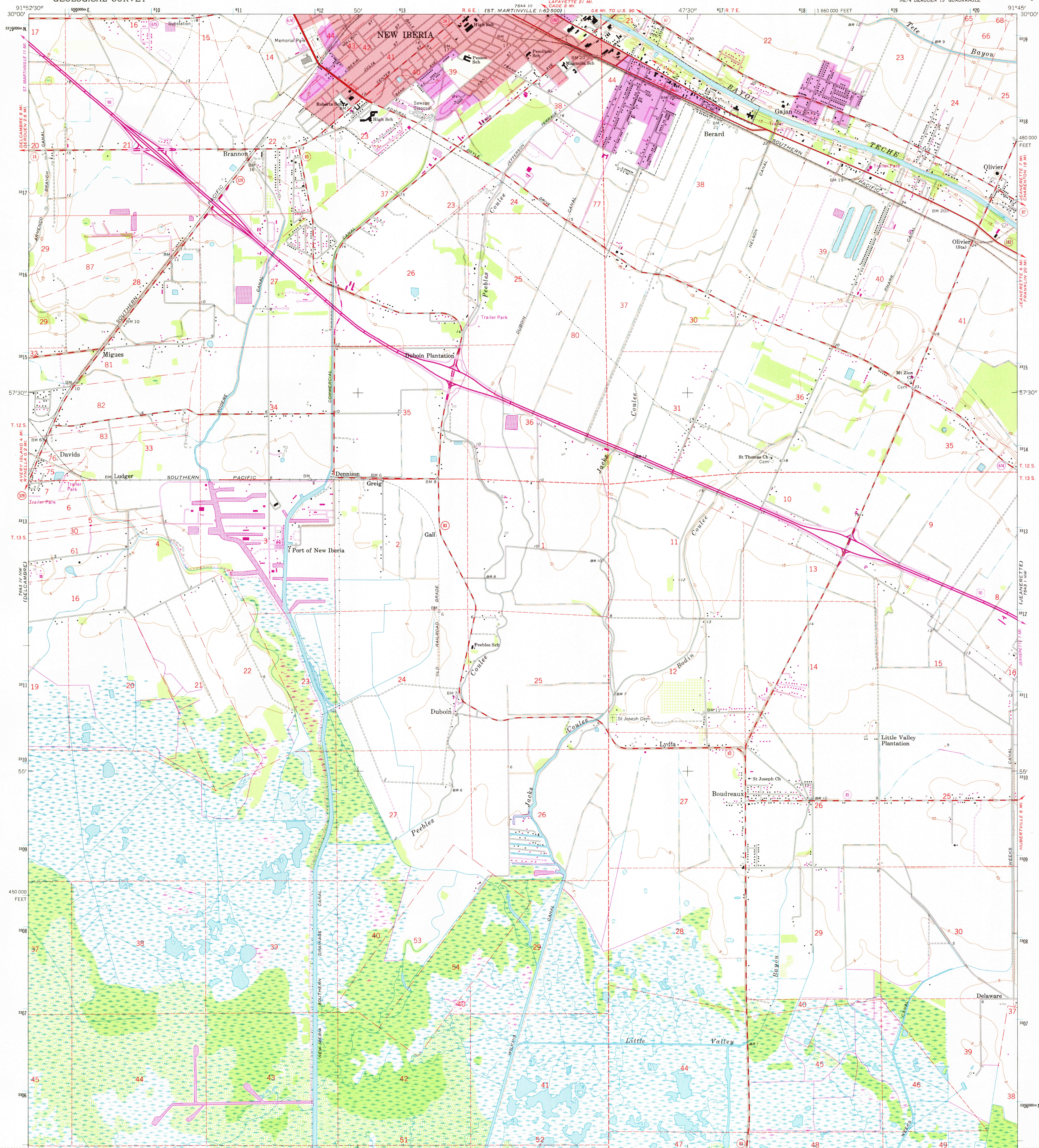


ST. MARTINVILLE  
7643 IV NW  
1:62,500

UNITED STATES  
DEPARTMENT OF THE INTERIOR  
GEOLOGICAL SURVEY

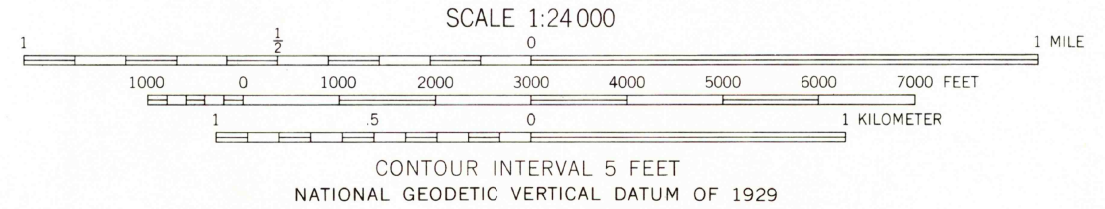
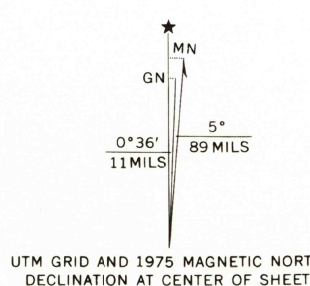
NEW IBERIA SOUTH QUADRANGLE  
LOUISIANA—IBERIA PARISH  
7.5 MINUTE SERIES (TOPOGRAPHIC)

LOREAUVILLE  
7644 VI SE  
1:62,500



(7.5 MINUTE)  
7643 IV NW

Mapped, edited, and published by the Geological Survey  
Control by USGS, USC&GS, and Louisiana Geodetic Survey  
Planimetry by photogrammetric methods from aerial photographs  
taken 1962. Topography by planetable surveys 1963  
Polyconic projection, 1927 North American datum  
10,000-foot grid based on Louisiana coordinate system, south zone  
1000-meter Universal Transverse Mercator grid ticks,  
zone 15, shown in blue  
Red tint indicates area in which only landmark buildings are shown  
Where omitted, land lines have not been established or  
are not shown because of insufficient data  
Revisions shown in purple compiled from aerial photographs  
taken 1975. This information not field checked  
Purple tint indicates extension of urban areas



THIS MAP COMPLIES WITH NATIONAL MAP ACCURACY STANDARDS  
FOR SALE BY U. S. GEOLOGICAL SURVEY, DENVER, COLORADO 80225, OR RESTON, VIRGINIA 22092  
AND STATE OF LOUISIANA, DEPARTMENT OF PUBLIC WORKS, BATON ROUGE, LOUISIANA 70804  
A FOLDER DESCRIBING TOPOGRAPHIC MAPS AND SYMBOLS IS AVAILABLE ON REQUEST



USGS  
Historical File  
Topographic Division

ROAD CLASSIFICATION  
Heavy-duty ——— Light-duty ———  
Medium-duty ——— Unimproved dirt ———  
U. S. Route ——— State Route ———

NEW IBERIA SOUTH, LA.  
NE/4 DEROUEN 15' QUADRANGLE  
N2952.5—W9145/7.5  
1963  
AMS 7643 IV NE—SERIES V885  
MAR 24 1979

(7.5 MINUTE)  
7644 VI SE

5/100