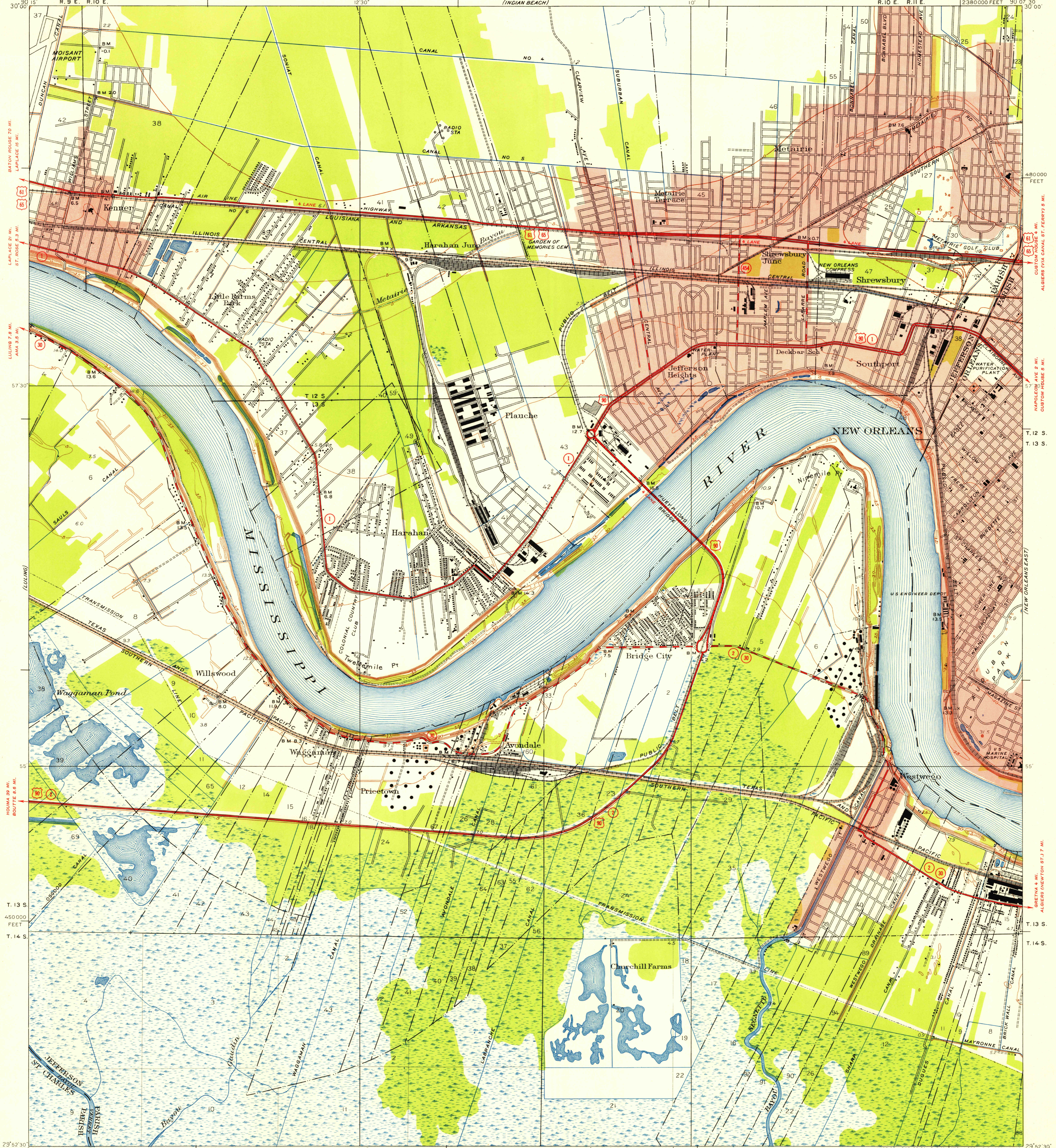


U.S.G.S. FILE COPY

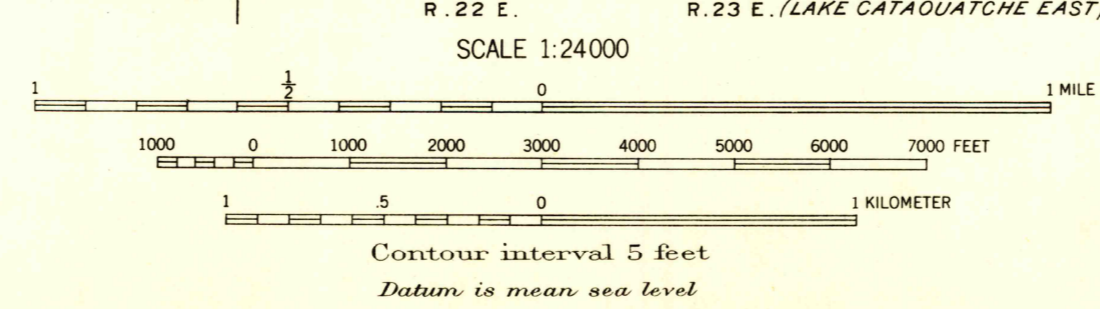
UNITED STATES DEPARTMENT OF THE INTERIOR GEOLOGICAL SURVEY

STATE OF LOUISIANA DEPARTMENT OF PUBLIC WORKS BATON ROUGE

NEW ORLEANS WEST QUADRANGLE LOUISIANA 7.5-MINUTE SERIES (TOPOGRAPHIC)



Mapped, edited and published by the Geological Survey Control by USGS, USC & GS, USCE, and Louisiana Geodetic Survey Culture and drainage in part compiled from aerial photographs Surveyed in 1934-1935. Culture revised 1951 Polyconic projection, 1927 North American datum 10000-foot grid based on Louisiana coordinate system, south zone Red tint indicates areas in which only landmark buildings are shown City of New Orleans and Orleans Parish are coextensive



USGS Historical File Topographic Division

ROAD CLASSIFICATION Heavy-duty 4 LANE 18 LANE Light-duty 4 LANE 6 LANE Unimproved dirt U.S. Route State Route

FOR SALE BY U.S. GEOLOGICAL SURVEY, FEDERAL CENTER, DENVER, COLORADO OR WASHINGTON 25, D.C. AND BY THE STATE OF LOUISIANA DEPARTMENT OF PUBLIC WORKS, BATON ROUGE 4, LOUISIANA A FOLDER DESCRIBING TOPOGRAPHIC MAPS AND SYMBOLS IS AVAILABLE ON REQUEST

U.S.G.S. FILE COPY Inspection and Editing

NEW ORLEANS WEST, LA N2952.5-W9007.5

1951