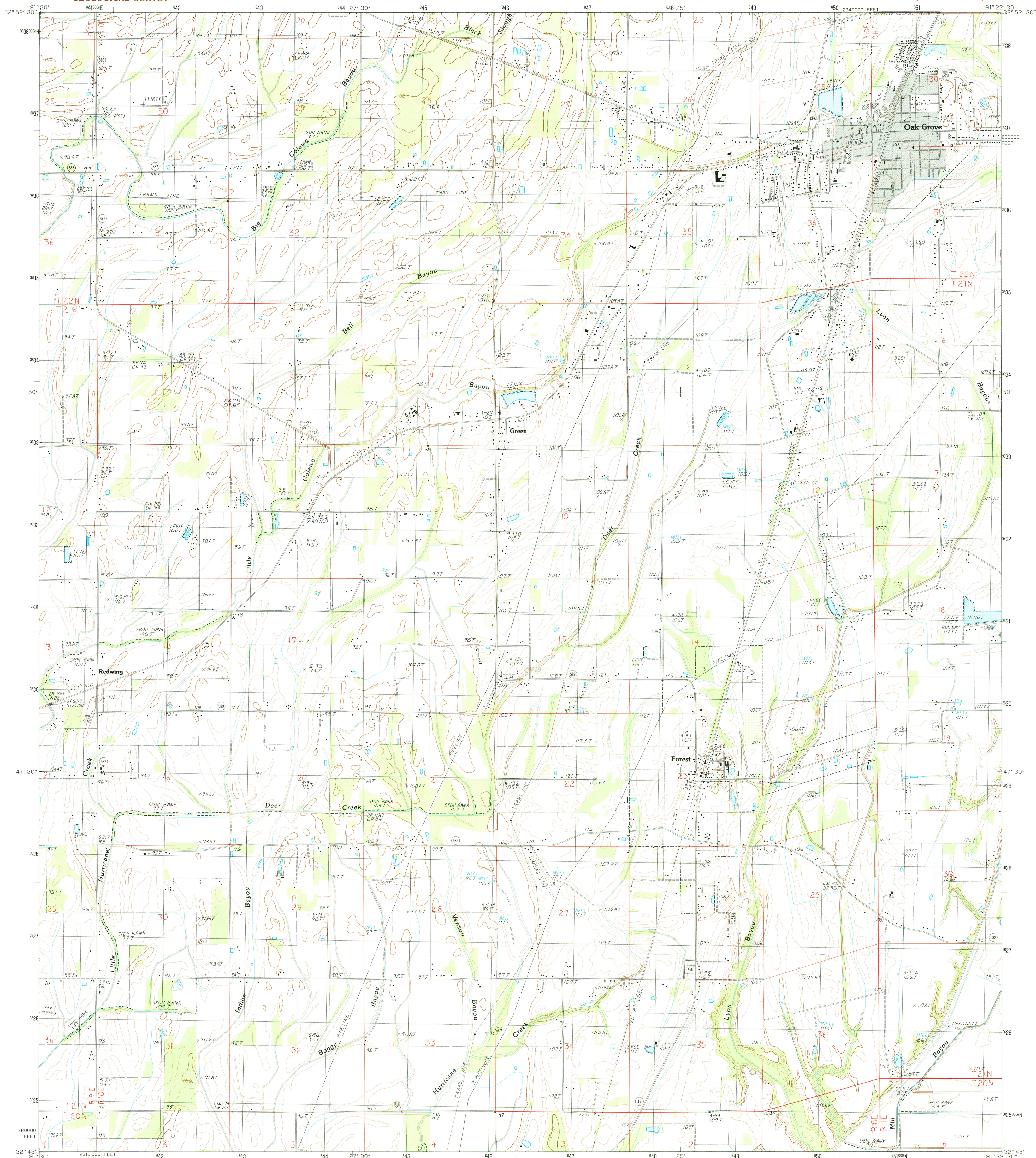


UNITED STATES
DEPARTMENT OF THE INTERIOR
GEOLOGICAL SURVEY

OAK GROVE QUADRANGLE
LOUISIANA—WEST CARROLL PARISH
7.5 MINUTE SERIES (TOPOGRAPHIC)



PRODUCED BY THE UNITED STATES GEOLOGICAL SURVEY
CONTROL BY USGS AND NOS/NOAA
COMPILED FROM AERIAL PHOTOGRAPHS TAKEN 1982
FIELD CHECKED 1984. MAP EDITED 1988
PROJECTION LAMBERT CONFORMAL CONIC
GRID: 1000-METER UNIVERSAL TRANSVERSE MERCATOR
11,000-FOOT STATE GRID TICKS LOUISIANA NORTH ZONE
UTM GRID DECLINATION 0°51' EAST
1988 MAGNETIC NORTH DECLINATION 9°00' EAST
VERTICAL DATUM NATIONAL GEODETIC VERTICAL DATUM OF 1999
HORIZONTAL DATUM 1927 NORTH AMERICAN DATUM
To place on the predicted North American Datum of 1983,
move the projection lines as shown by dashed corner ticks
(12 meters south and 11 meters east)
There may be private inholdings within the boundaries of any
Federal and State reservations shown on this map
No distinction made between houses, barns, and other buildings
Gray tint indicates area in which selected buildings are shown

PROVISIONAL MAP
Produced from original
manuscript drawings. Information
shown as of date of
photography.

SCALE 1:24 000
1 0 1000 2000 3000 4000 5000 6000 7000 8000 9000 10 000
FEET
1 0 1000 2000 3000 4000 5000 6000 7000 8000 9000 10 000
METERS
CONTOUR INTERVAL 5 FEET
CONTROL ELEVATIONS SHOWN TO THE NEAREST 0.1 FOOT
OTHER ELEVATIONS SHOWN TO THE NEAREST FOOT
To convert feet to meters multiply by 3.048
To convert meters to feet multiply by 3.2808
THIS MAP COMPLIES WITH NATIONAL MAP ACCURACY STANDARDS
FOR SALE BY U.S. GEOLOGICAL SURVEY, DENVER, COLORADO 80225, OR RESTON, VIRGINIA 22092
AND LOUISIANA DEPARTMENT OF PUBLIC WORKS, BATON ROUGE, LOUISIANA 70804

ROAD LEGEND
Improved Road
Unimproved Road
Trail
Interstate Route U.S. Route State Route
QUADRANGLE LOCATION
LOUISIANA
ADJOINING 7.5 QUADRANGLE NAMES
1 2 3 1 Lusk
2 Flak
3 Kilbourne
4 Goodwill
5 Baster Bayou
6 Bearskin
7 Pioneer
8 Caraway Lake
OAK GROVE, LOUISIANA
SW 1/4 OAK GROVE 15' QUADRANGLE
PROVISIONAL EDITION 1988
32091-G4-TF-024

RECD FILE COPY
MAY 13 1988

USGS AND HISTORICAL MAP