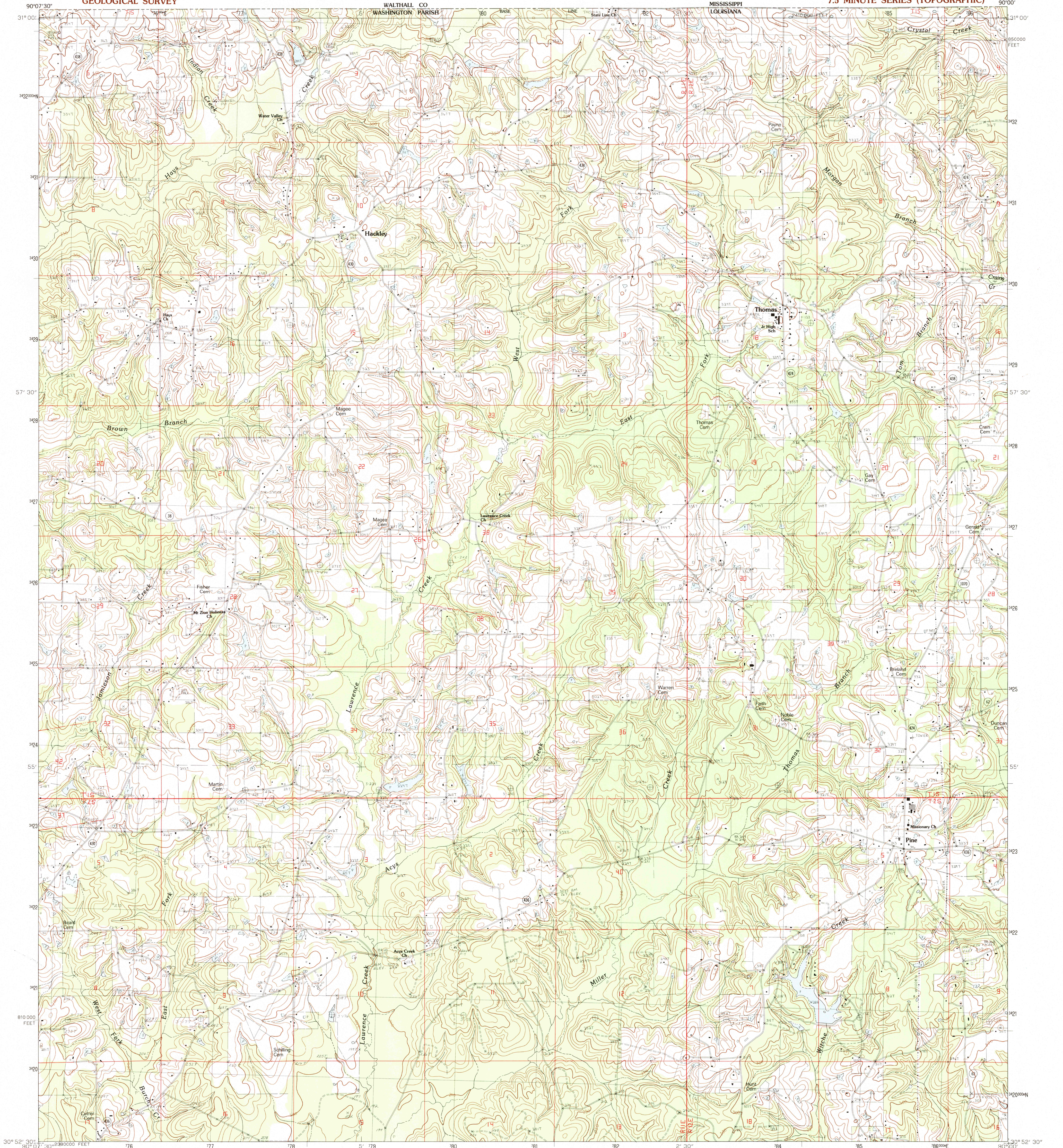
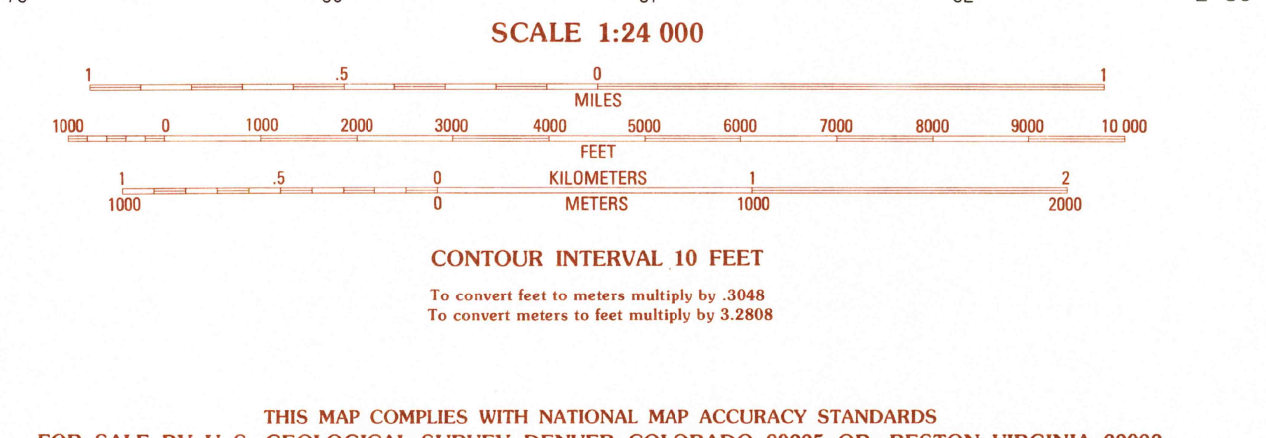


WALTHALL CO WASHINGTON PARISH MISSISSIPPI LOUISIANA



PRODUCED BY THE UNITED STATES GEOLOGICAL SURVEY CONTROL BY USGS AND NOS/NOAA COMPILED FROM AERIAL PHOTOGRAPHS TAKEN 1978 FIELD CHECKED 1980 MAP EDITED 1983 PROJECTION LAMBERT CONFORMAL CONIC GRID: 1000-METER UNIVERSAL TRANSVERSE MERCATOR 10,000-FOOT STATE GRID TICKS LOUISIANA, SOUTH ZONE UTM GRID DECLINATION 131° EAST 1983 MAGNETIC NORTH DECLINATION 330° EAST VERTICAL DATUM NATIONAL GEODETIC VERTICAL DATUM OF 1929 HORIZONTAL DATUM 1927 NORTH AMERICAN DATUM To place on the predicted North American Datum of 1983, move the projection lines as shown by dashed corner ticks (17 meters south and 7 meters east) There may be private inholdings within the boundaries of any Federal and State reservations shown on this map

**PROVISIONAL MAP**  
Produced from original manuscript drawings. Information shown as of date of field check.



QUADRANGLE LOCATION

ROAD LEGEND

- Improved Road
- Unimproved Road
- Trail
- Interstate Route
- U. S. Route
- State Route

1	2	3	1 Tylertown SE
4	5	4 Clifton	2 Tylertown SE
6	7	5 State Line	3 Dexter
		6 Franklinton	4 Clifton
		7 Sheridan	5 State Line
		8 Bogalusa West	6 Franklinton

ADJOINING 7.5' QUADRANGLE NAMES

**PINE, LOUISIANA**  
NE 4 FRANKLINTON 15' QUADRANGLE  
PROVISIONAL EDITION 1983  
30090-11-TF-024