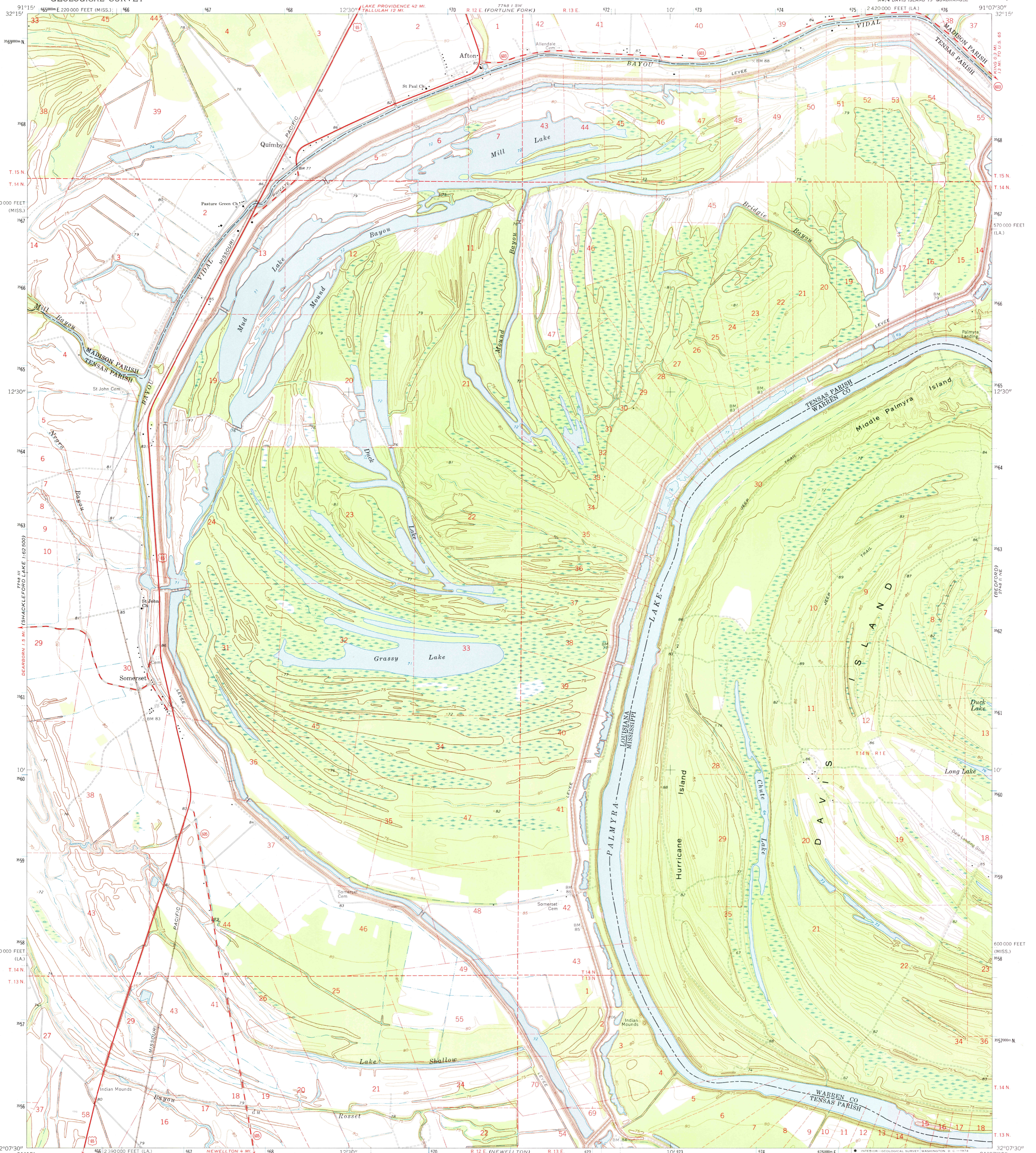
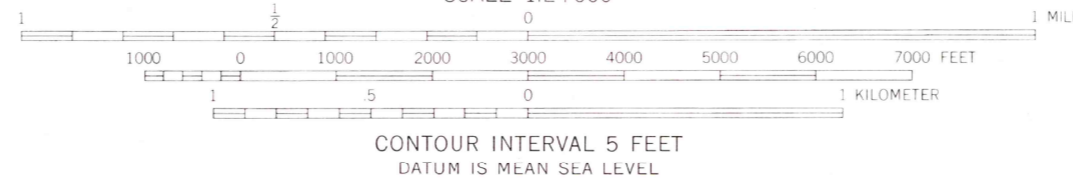
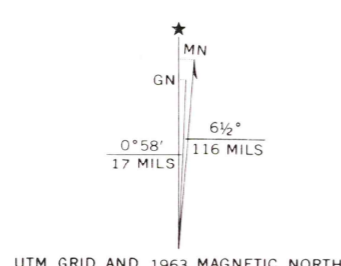


UNITED STATES
DEPARTMENT OF THE INTERIOR
GEOLOGICAL SURVEY

SOMERSET QUADRANGLE
LOUISIANA-MISSISSIPPI
7.5 MINUTE SERIES (TOPOGRAPHIC)
NW/4 DAVIS ISLAND 15' QUADRANGLE



Mapped, edited, and published by the Geological Survey
Control by USGS, USC&GS, and USCE
Planimetry by photogrammetric methods from aerial photographs
taken 1962. Topography by plane-table surveys 1963
Polyconic projection, 1927 North American datum
10,000-foot grids based on Louisiana coordinate system, north zone
and Mississippi coordinate system, west zone
1000-meter Universal Transverse Mercator grid ticks,
zone 15, shown in blue
Fine red dashed lines indicate selected fence and field lines where
generally visible on aerial photographs. This information is unchecked



THIS MAP COMPLIES WITH NATIONAL MAP ACCURACY STANDARDS
FOR SALE BY U.S. GEOLOGICAL SURVEY, DENVER, COLORADO 80225, OR WASHINGTON, D. C. 20242
AND BY THE STATE OF LOUISIANA, DEPARTMENT OF PUBLIC WORKS, BATON ROUGE, LOUISIANA 70804
A FOLDER DESCRIBING TOPOGRAPHIC MAPS AND SYMBOLS IS AVAILABLE ON REQUEST



ROAD CLASSIFICATION
Heavy-duty ——— Light-duty ———
Medium-duty ——— Unimproved dirt ———
U.S. Route ——— State Route ———

SOMERSET, LA.-MISS.
NW/4 DAVIS ISLAND 15' QUADRANGLE
N3207.5-W9107.5/7.5

1963
AMS 7748 II NW-SERIES V885