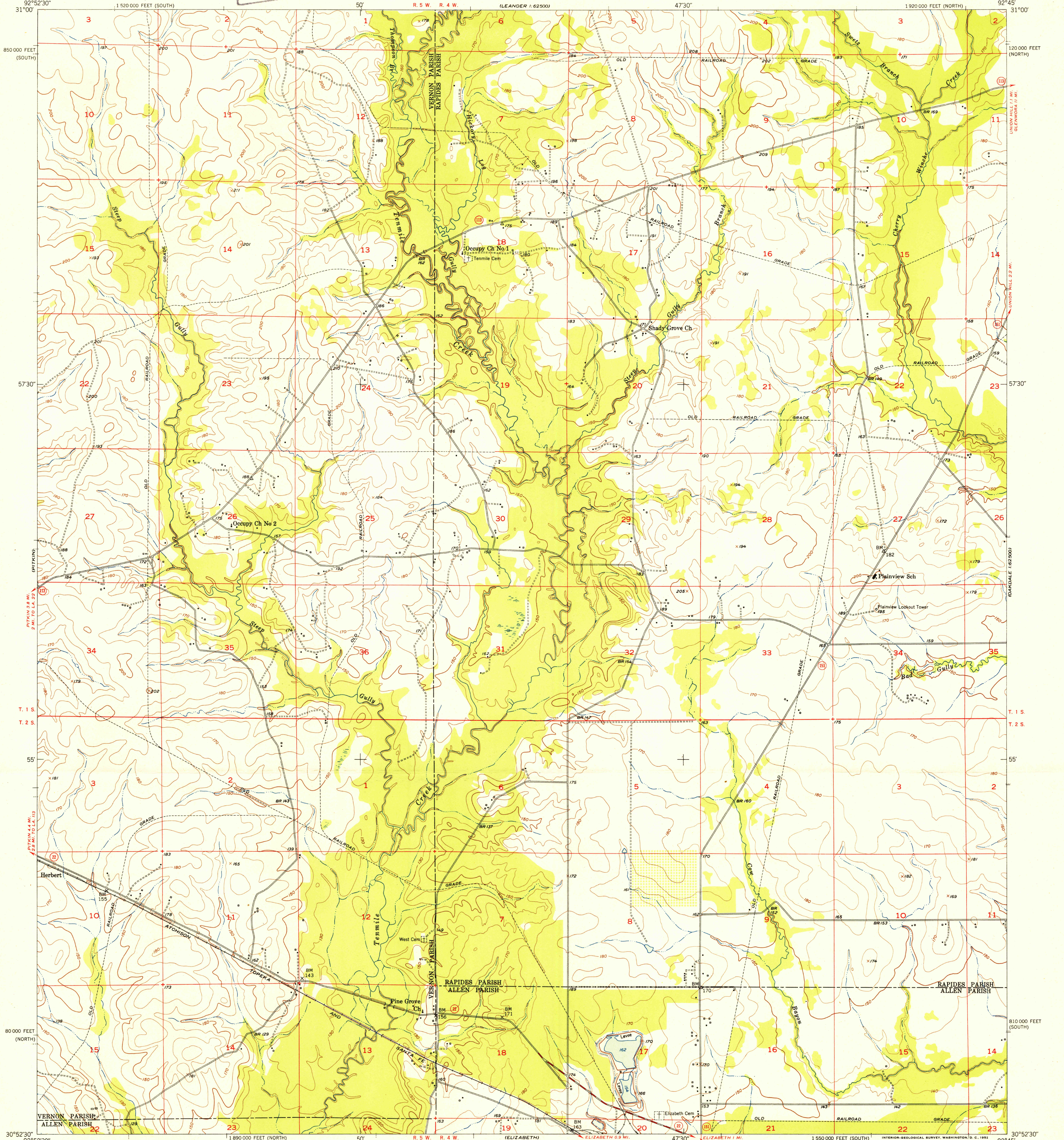


FILE COPY
Inspecting and Rating

UNITED STATES
DEPARTMENT OF THE INTERIOR
GEOLOGICAL SURVEY

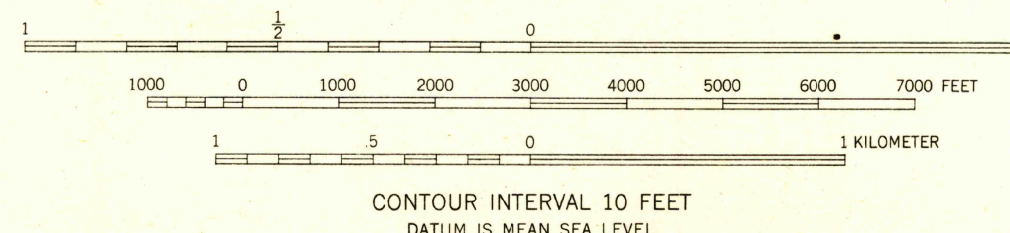
STATE OF LOUISIANA
DEPARTMENT OF PUBLIC WORKS
BATON ROUGE

STEEP GULLY QUADRANGLE
LOUISIANA
7.5 MINUTE SERIES (TOPOGRAPHIC)



Mapped, edited, and published by the Geological Survey
Control by Louisiana Geodetic Survey,
USGS, and USC&GS
Culture and drainage in part compiled from
aerial photographs taken 1940
Topography by plane-table methods 1946-1947, and 1951
Polyconic projection. 1927 North American Datum
10,000-foot grids based on Louisiana coordinate system,
north and south zones

TRUE NORTH
MAGNETIC NORTH
APPROXIMATE MEAN
DECLINATION, 1951



USGS
Historical File
Topographic Division

ROAD CLASSIFICATION
Heavy-duty 4 LANE 6 LANE Light-duty
Medium-duty 4 LANE 6 LANE Unimproved dirt
 U.S. Route State Route

THIS MAP COMPLIES WITH NATIONAL MAP ACCURACY STANDARDS
FOR SALE BY U. S. GEOLOGICAL SURVEY, FEDERAL CENTER, DENVER, COLORADO OR WASHINGTON 25, D. C.
AND BY THE STATE OF LOUISIANA, DEPARTMENT OF PUBLIC WORKS, BATON ROUGE 4, LOUISIANA
A FOLDER DESCRIBING TOPOGRAPHIC MAPS AND SYMBOLS IS AVAILABLE ON REQUEST

FILE COPY
Inspecting and Rating

STEEP GULLY, LA.
N3052.5-W9245/7.5
1951