

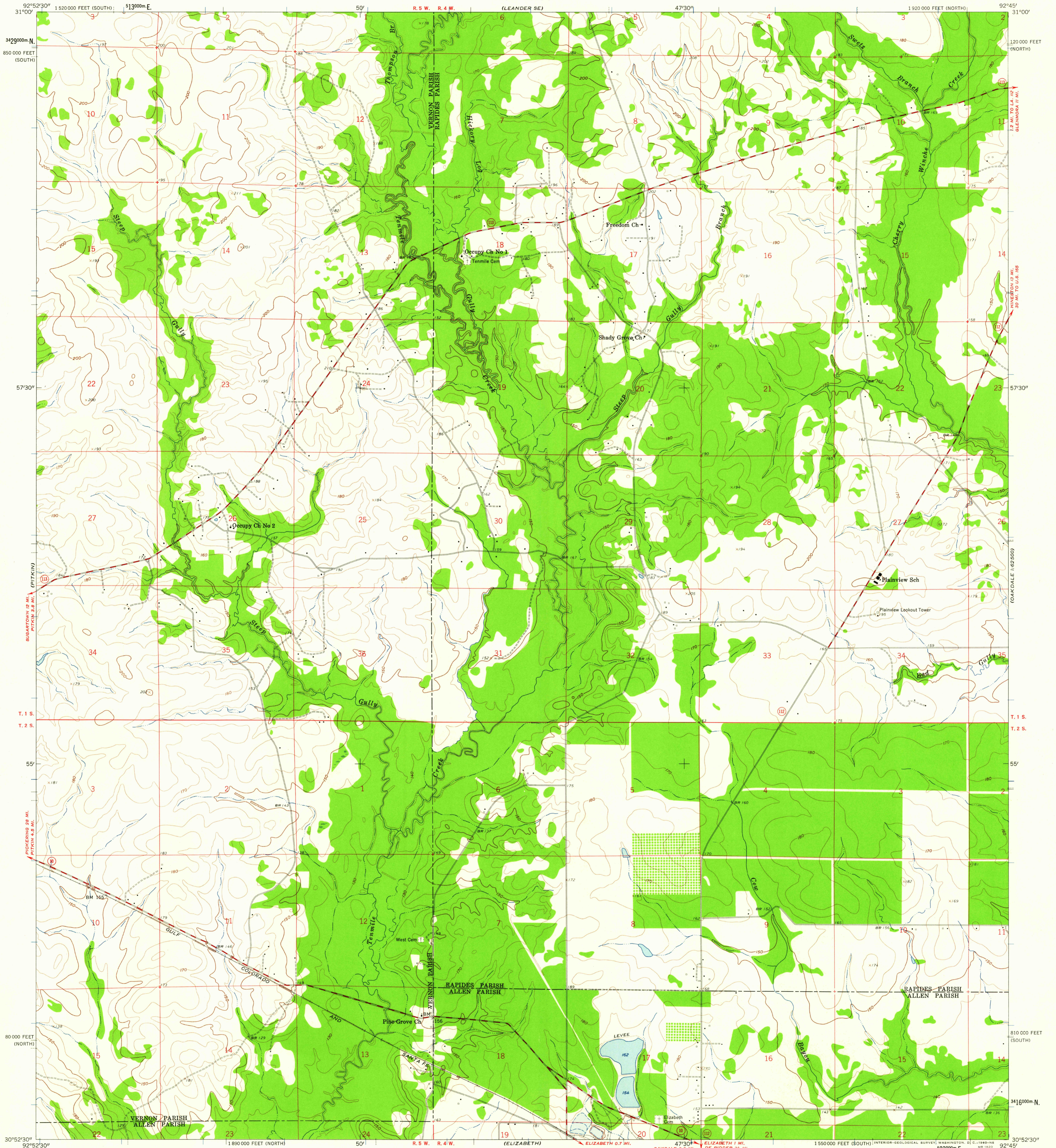
GULLERTON LAKE

UNITED STATES  
DEPARTMENT OF THE INTERIOR  
GEOLOGICAL SURVEY

STATE OF LOUISIANA  
DEPARTMENT OF PUBLIC WORKS  
BATON ROUGE

STEEP GULLY QUADRANGLE  
LOUISIANA  
7.5 MINUTE SERIES (TOPOGRAPHIC)  
NE/4 ELIZABETH 15' QUADRANGLE

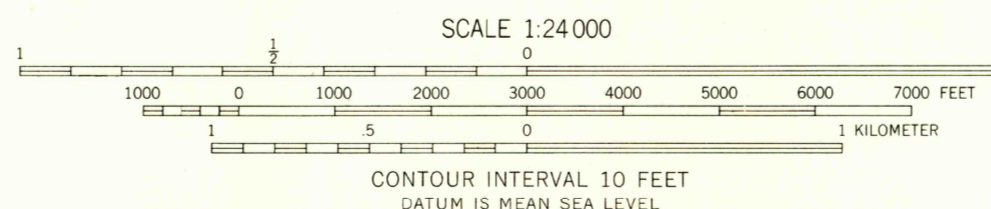
FOREST HILL 1:62,500



Mapped, edited, and published by the Geological Survey  
Control by USGS, USC&GS, and Louisiana Geodetic Survey  
Culture and drainage in part compiled from aerial photographs  
taken 1951. Topography by planetable surveys 1946-1947  
and 1951. Revised 1959

Polyconic projection. 1927 North American datum  
10,000-foot grids based on Louisiana coordinate system,  
north and south zones  
1000-meter Universal Transverse Mercator grid ticks,  
zone 15, shown in blue

TRUE NORTH  
MAGNETIC NORTH  
APPROXIMATE MEAN  
DECLINATION, 1959



USGS  
Historical File  
Topographic Division



ROAD CLASSIFICATION  
Medium-duty ——— Light-duty ———  
Unimproved dirt - - - - - State Route ○

U.S.G.S.  
FILE COPY  
TOPOGRAPHIC DIVISION

STEEP GULLY, LA.  
NE/4 ELIZABETH 15' QUADRANGLE  
N 3052.5—W 9245.7/5

1959

MAR 10 1960

1910