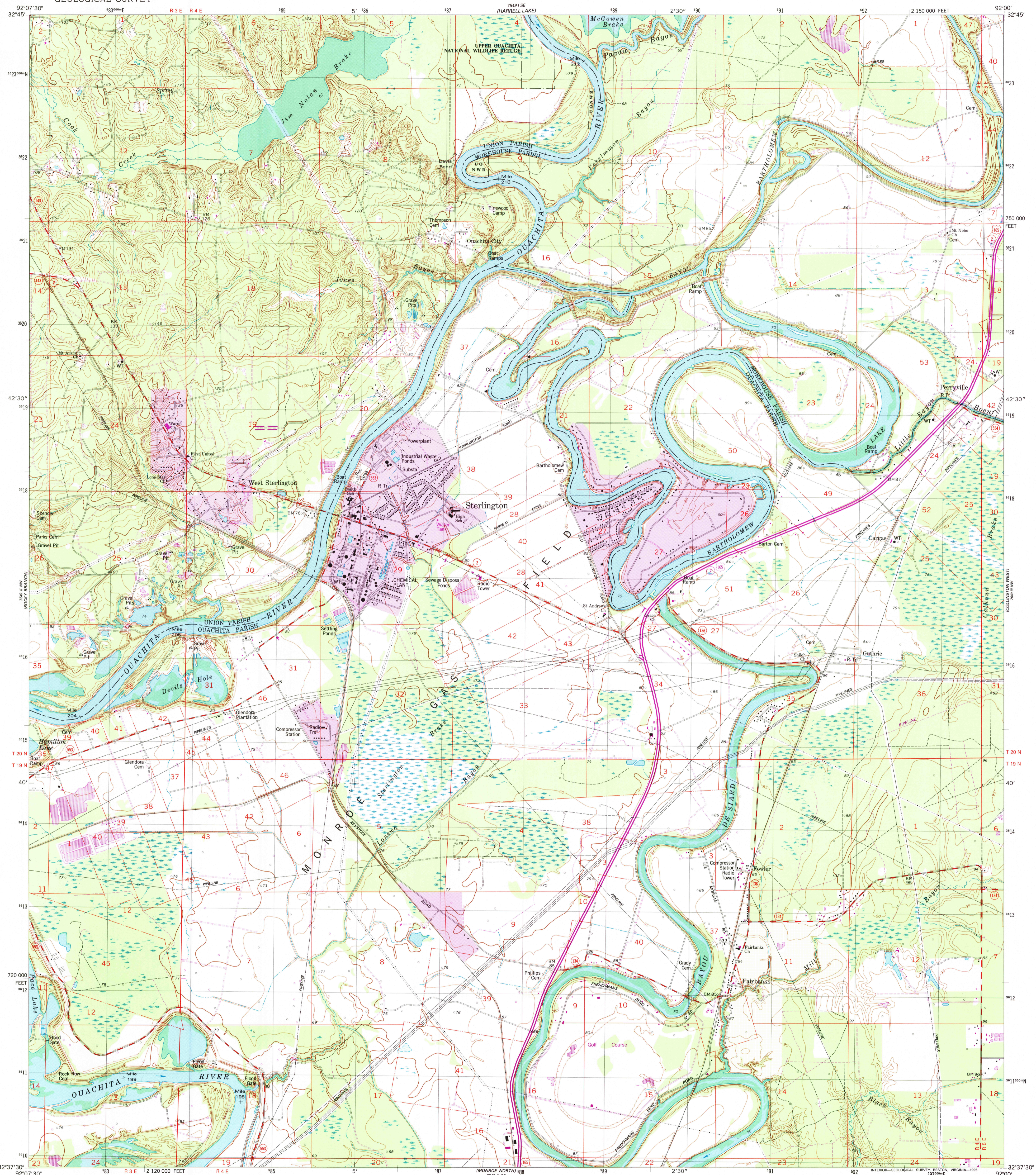


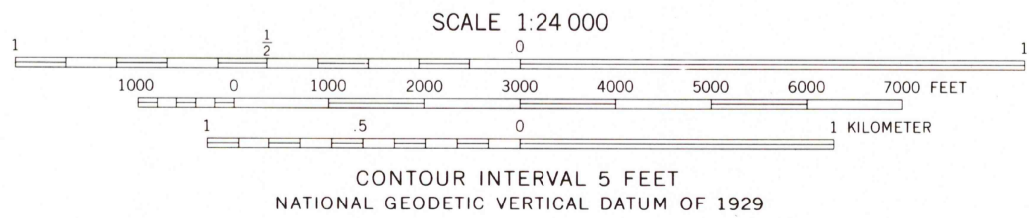
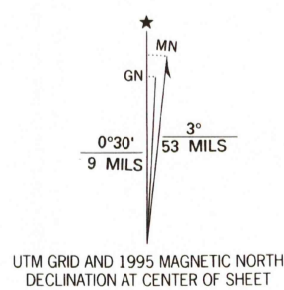
7549 I SE
(HARRELL LAKE)

UNITED STATES
DEPARTMENT OF THE INTERIOR
GEOLOGICAL SURVEY

STERLING QUADRANGLE
LOUISIANA
7.5 MINUTE SERIES (TOPOGRAPHIC)



Produced by the United States Geological Survey
Compiled by photogrammetric methods from imagery dated 1976
Field checked 1978. Map edited 1982
North American Datum of 1927 (NAD 27). Projection and
10 000-foot ticks: Louisiana coordinate system, north zone
(Lambert conformal conic)
1000-meter Universal Transverse Mercator grid, zone 15
North American Datum of 1983 (NAD 83) is shown by dashed
corner ticks. The values of the shift between NAD 27 and NAD 83
for 7.5-minute intersections are obtainable from National Geodetic
Survey NADCON software
There may be private inholdings within the boundaries of
the National or State reservations shown on this map



THIS MAP COMPLIES WITH NATIONAL MAP ACCURACY STANDARDS
FOR SALE BY U.S. GEOLOGICAL SURVEY, DENVER, COLORADO 80225, OR RESTON, VIRGINIA 22092
AND LOUISIANA DEPARTMENT OF TRANSPORTATION AND DEVELOPMENT, BATON ROUGE, LOUISIANA 70804
A FOLDER DESCRIBING TOPOGRAPHIC MAPS AND SYMBOLS IS AVAILABLE ON REQUEST

Revisions shown in purple compiled in cooperation with
State of Louisiana agencies from imagery dated 1994
and other sources. Map edited 1995
Information shown in purple may not meet USGS content
standards and may conflict with previously mapped contours

ROAD CLASSIFICATION

Primary highway, hard surface	Light-duty road, hard or improved surface
Secondary highway, hard surface	Unimproved road

○ Interstate Route □ U. S. Route ○ State Route

USGS NHD HISTORICAL
MAP ARCHIVES
SEP 13 1995
REC'D FILE COPY

STERLING, LA
32092-F1-TF-024
1994
DMA 7549 II NE-SERIES V885

ISBN 0-607-00966-7
9 780607 009668