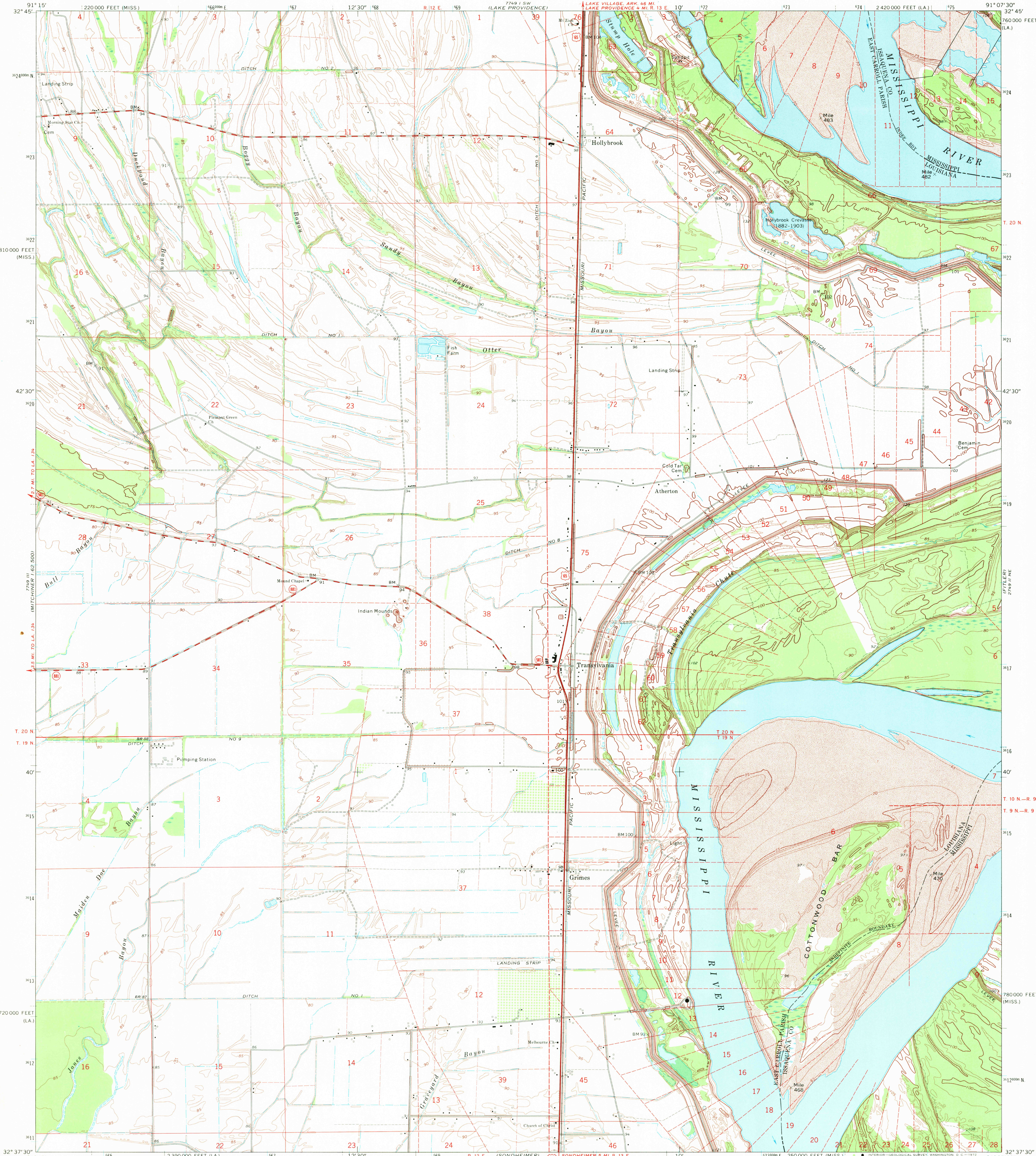
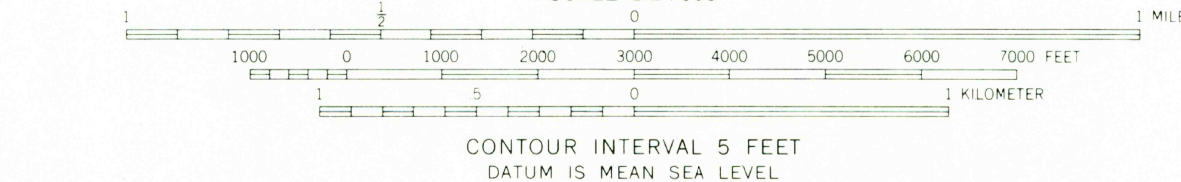
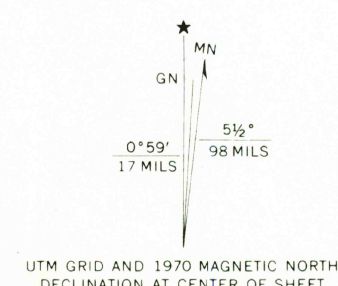


UNITED STATES  
DEPARTMENT OF THE INTERIOR  
GEOLOGICAL SURVEY

TRANSYLVANIA QUADRANGLE  
LOUISIANA—MISSISSIPPI  
7.5 MINUTE SERIES (TOPOGRAPHIC)  
NW 4 ALBATIA 15' QUADRANGLE



Mapped, edited, and published by the Geological Survey  
Control by USGS, USC&GS, and USCE  
Topography by photogrammetric methods from aerial  
photographs taken 1967. Field checked 1970  
Polyconic projection. 1927 North American datum  
10,000-foot grids based on Louisiana coordinate system, north zone  
and Mississippi coordinate system, west zone  
1000-meter Universal Transverse Mercator grid ticks,  
zone 15, shown in blue  
Fine red dashed lines indicate selected fence and field lines where  
generally visible on aerial photographs. This information is unchecked



ROAD CLASSIFICATION  
Primary highway, all weather, hard surface  
Secondary highway, all weather, hard surface  
Light-duty road, all weather, improved surface  
Unimproved road, fair or dry weather  
U.S. Route  
State Route

TRANSYLVANIA, LA.—MISS.  
NW 4 ALBATIA 15' QUADRANGLE  
N 3237.5—W 9107.5/7.5

1970  
AMS 7749 II NW—SERIES V885

THIS MAP COMPLIES WITH NATIONAL MAP ACCURACY STANDARDS  
FOR SALE BY U.S. GEOLOGICAL SURVEY, DENVER, COLORADO 80225, OR WASHINGTON, D.C. 20242  
AND BY THE STATE OF LOUISIANA, DEPARTMENT OF PUBLIC WORKS, BATON ROUGE, LOUISIANA 70804  
A FOLDER DESCRIBING TOPOGRAPHIC MAPS AND SYMBOLS IS AVAILABLE ON REQUEST

USGS  
HISTORICAL FILE  
TOPOGRAPHIC DIVISION