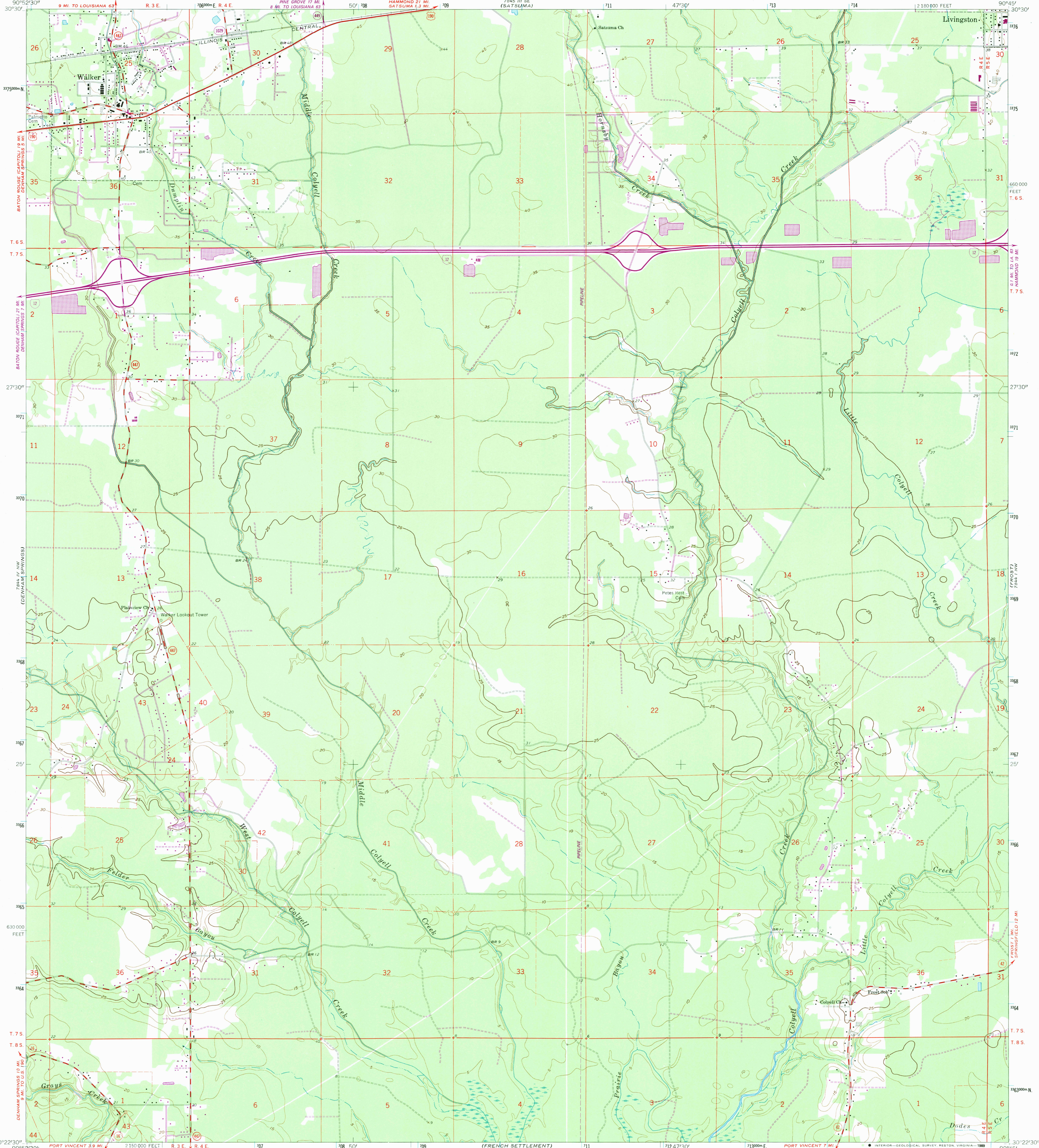


7844 IV NW  
(DENHAM SPRINGS)

UNITED STATES  
DEPARTMENT OF THE INTERIOR  
GEOLOGICAL SURVEY

WALKER QUADRANGLE  
LOUISIANA—LIVINGSTON PARISH  
7.5 MINUTE SERIES (TOPOGRAPHIC)  
NE/4 DENHAM SPRINGS 15' QUADRANGLE

7844 IV SW  
(HOLLAND)



Mapped, edited, and published by the Geological Survey

Control by USGS and USC&GS

Planimetry by photogrammetric methods from aerial photographs taken 1952. Topography by planimetric surveys 1952-53. Revised 1962

Polyconic projection. 1927 North American datum

10,000-foot grid based on Louisiana coordinate system, south zone

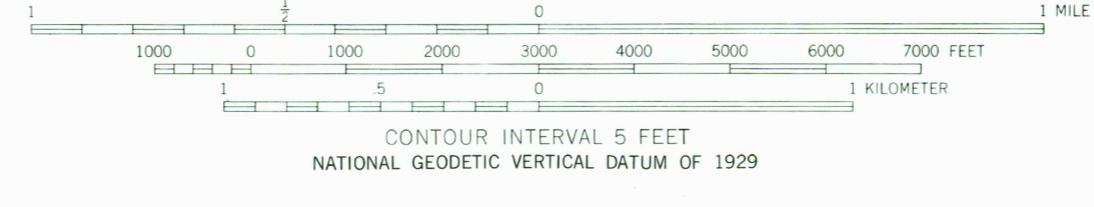
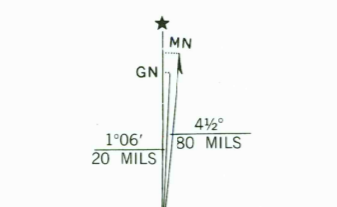
1000-meter Universal Transverse Mercator grid ticks, zone 15, shown in blue

Fine red dashed lines indicate selected fence and field lines where generally visible on aerial photographs. This information is un-checked

To place on the predicted North American Datum 1983

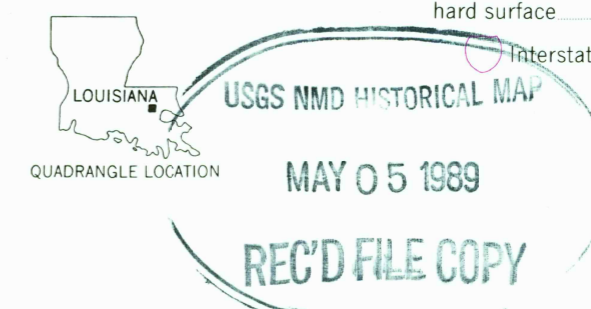
move the projection lines 18 meters south and 10 meters east as shown by dashed corner ticks

Revisions shown in purple and woodland compiled from aerial photographs taken 1978. Map edited 1980. This information not field checked



ROAD CLASSIFICATION

Primary highway, hard surface	Light-duty road, hard or improved surface
Secondary highway, hard surface	Unimproved road
Interstate Route	U. S. Route
	State Route



WALKER, LA.  
NE/4 DENHAM SPRINGS 15' QUADRANGLE  
30090-D7-TF-024

1962  
PHOTOREVISED 1980  
DMA 7844 IV NE—SERIES V885

THIS MAP COMPLIES WITH NATIONAL MAP ACCURACY STANDARDS  
FOR SALE BY U. S. GEOLOGICAL SURVEY, DENVER, COLORADO 80225, OR RESTON, VIRGINIA 22092  
AND STATE OF LOUISIANA, DEPARTMENT OF PUBLIC WORKS, BATON ROUGE, LOUISIANA 70804  
A FOLDER DESCRIBING TOPOGRAPHIC MAPS AND SYMBOLS IS AVAILABLE ON REQUEST