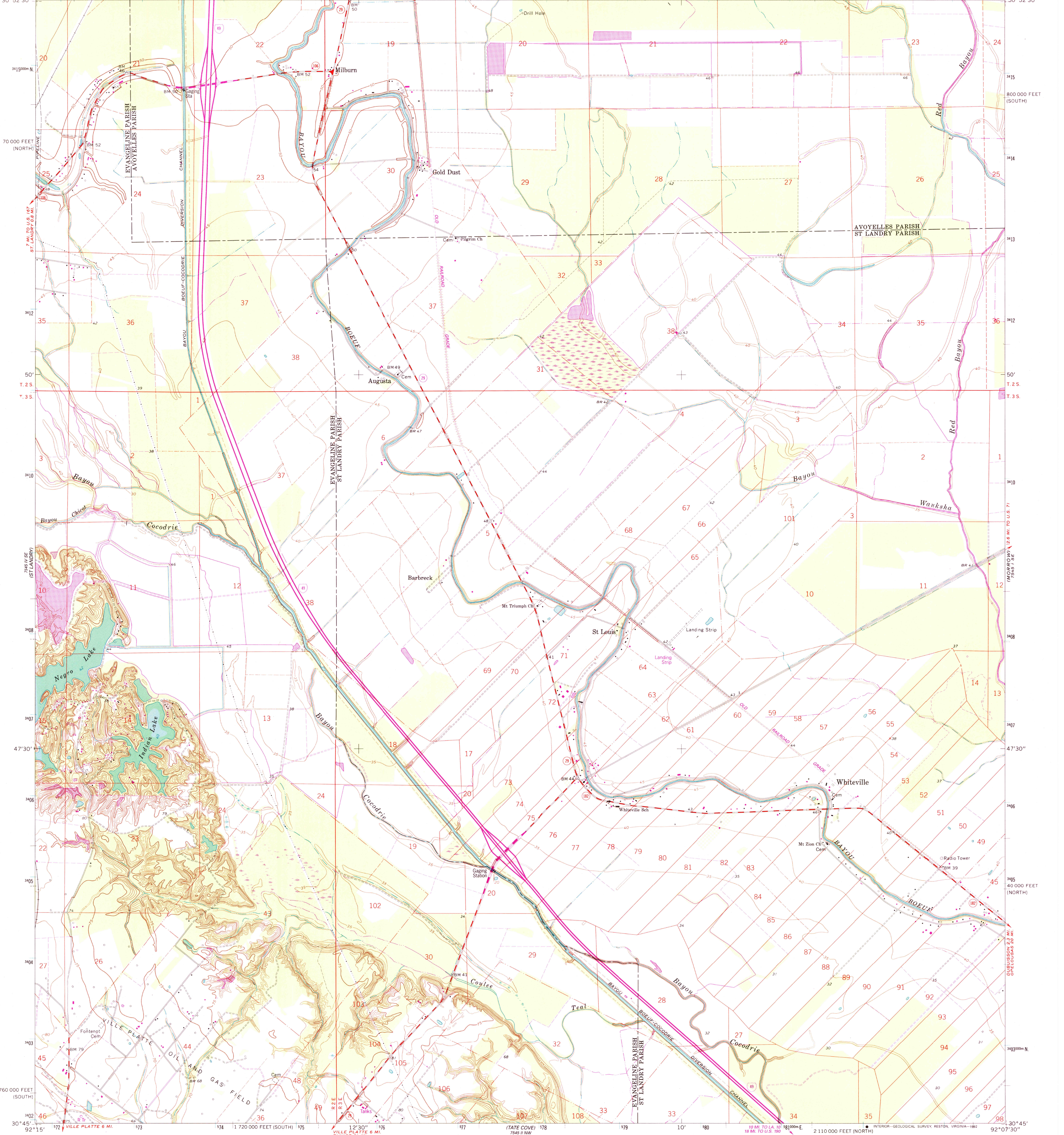


UNITED STATES
DEPARTMENT OF THE INTERIOR
GEOLOGICAL SURVEY

STATE OF LOUISIANA
DEPARTMENT OF TRANSPORTATION AND DEVELOPMENT
DIVISION OF FLOOD CONTROL AND WATER MANAGEMENT

WHITEVILLE QUADRANGLE
LOUISIANA
7.5 MINUTE SERIES (TOPOGRAPHIC)
SW/4 BUNKIE 15' QUADRANGLE



Mapped, edited, and published by the Geological Survey
Control by USGS, USC&GS, and USCE
Planimetry by photogrammetric methods from aerial photographs
taken 1965. Topography by planetable surveys 1966
Polyconic projection. 1927 North American datum
10,000-foot grids based on Louisiana coordinate system, south
and north zones
1000-meter Universal Transverse Mercator grid ticks,
zone 15, shown in blue
Fine red dashed lines indicate selected fence and field lines where
generally visible on aerial photographs. This information is unchecked

UTM GRID AND 1992 MAGNETIC NORTH
DECLINATION AT CENTER OF SHEET
To place on the predicted North American Datum 1983
move the projection lines 17 meters south and
13 meters east as shown by dashed corner ticks

THIS MAP COMPLIES WITH NATIONAL MAP ACCURACY STANDARDS
FOR SALE BY U.S. GEOLOGICAL SURVEY, DENVER, COLORADO 80225, OR RESTON, VIRGINIA 22092
AND LOUISIANA DEPARTMENT OF TRANSPORTATION AND DEVELOPMENT, BATON ROUGE, LOUISIANA 70804
A FOLDER DESCRIBING TOPOGRAPHIC MAPS AND SYMBOLS IS AVAILABLE ON REQUEST

ROAD CLASSIFICATION
Primary highway, hard surface
Secondary highway, hard surface
Unimproved road, hard surface
Light-duty road, hard or improved surface
Unimproved road, hard surface
Interstate Route
U. S. Route
State Route

WHITEVILLE, LA.
SW/4 BUNKIE 15' QUADRANGLE
30092 G2-TF-024
1966
REVISED 1992
DMA 7545 I SW-SERIES V885