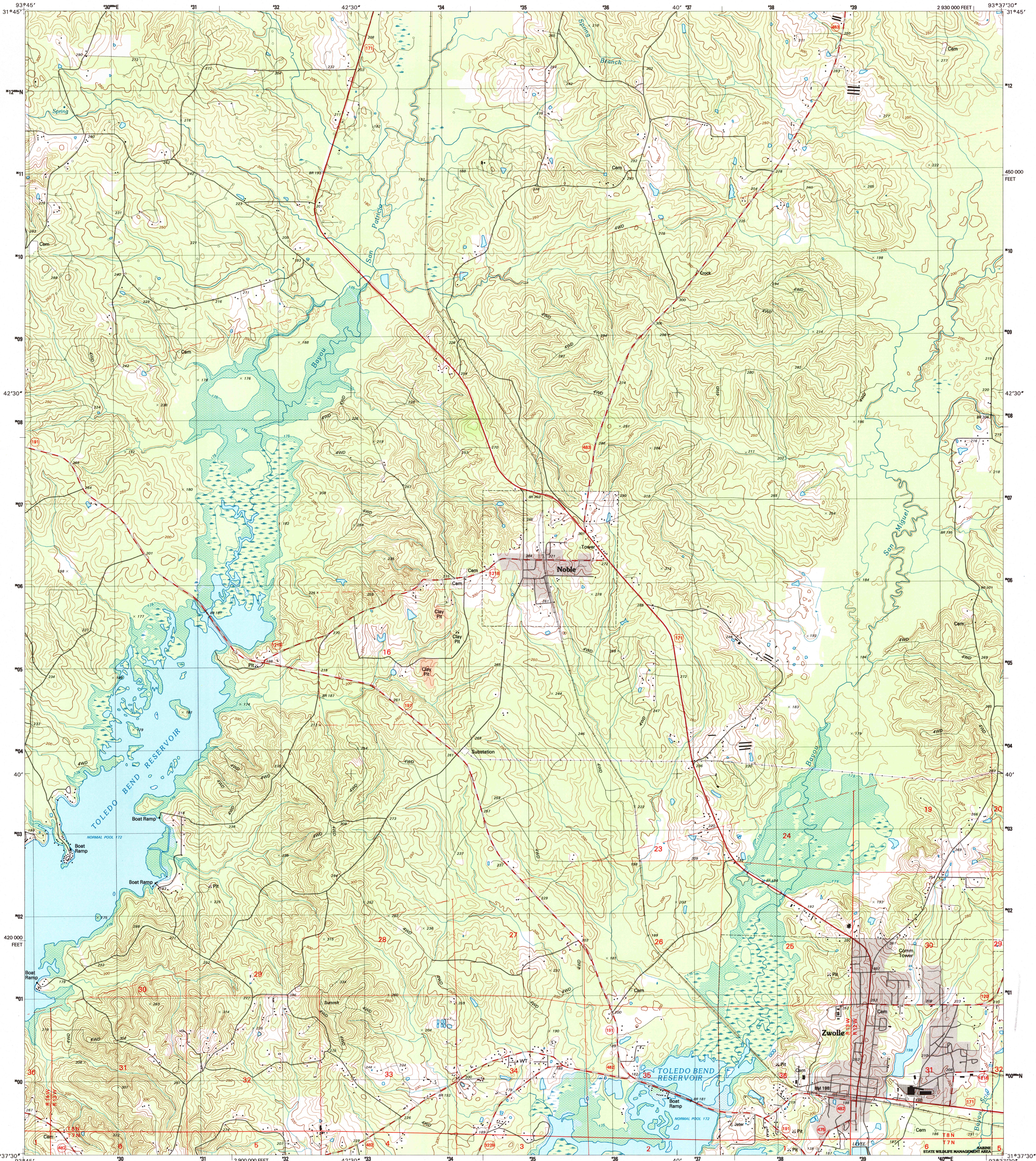


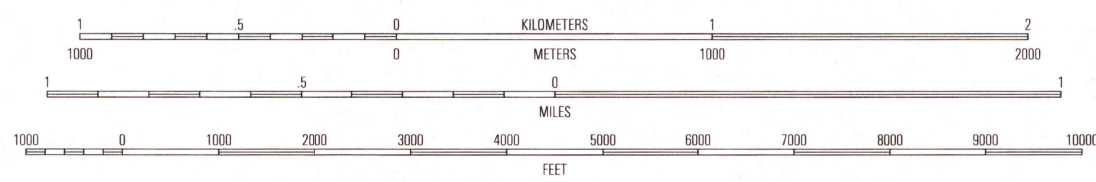
UNITED STATES  
DEPARTMENT OF THE INTERIOR  
GEOLOGICAL SURVEY

ZWOLLE QUADRANGLE  
LOUISIANA-SABINE PARISH  
7.5-MINUTE SERIES (TOPOGRAPHIC)



Produced by the United States Geological Survey  
in cooperation with State of Louisiana agencies  
Compiled by photogrammetric methods from imagery dated 1982  
Field checked 1985. Revised from imagery dated 1994-95  
FLSS and survey control current as of 1985. Map edited 1996  
Contours not revised  
North American Datum of 1983 (NAD 83). Projection and  
1:000-meter grid: Universal Transverse Mercator, zone 15  
10 000-foot ticks: Louisiana Coordinate System of 1983 (north zone)  
North American Datum of 1927 (NAD 27) is shown by dashed  
corner ticks. The values of the shift between NAD 83 and NAD 27  
for 7.5-minute intersections are obtainable from National Geodetic  
Survey NADCON software  
There may be private inholdings within the boundaries of  
the National or State reservations shown on this map

UTM GRID AND 1996 MAGNETIC NORTH  
DECLINATION AT CENTER OF SHEET

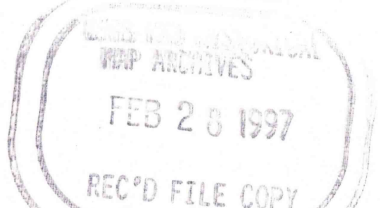


THIS MAP COMPLIES WITH NATIONAL MAP ACCURACY STANDARDS  
FOR SALE BY U.S. GEOLOGICAL SURVEY, DENVER, COLORADO 80225, OR RESTON, VIRGINIA 22092  
AND LOUISIANA DEPARTMENT OF TRANSPORTATION AND DEVELOPMENT, BATON ROUGE, LOUISIANA 70804  
A FOLDER DESCRIBING TOPOGRAPHIC MAPS AND SYMBOLS IS AVAILABLE ON REQUEST



1	2	3	1 Union Springs
			2 Converse
			3 Pleasant Hill
4		5	4 Brandy Creek
			5 Belmont
			6 East Hamilton
6	7	8	7 Beech Bayou
			8 Loring

ROAD CLASSIFICATION  
Primary highway  
hard surface .....  
Secondary highway  
hard surface .....  
Unimproved road .....  
Light-duty road, hard or  
improved surface .....  
Unimproved road .....  
Interstate Route  
U.S. Route  
State Route



ZWOLLE, LA  
31093-F6-TF-024

1995

DMA 7247 II NW-SERIES V885

