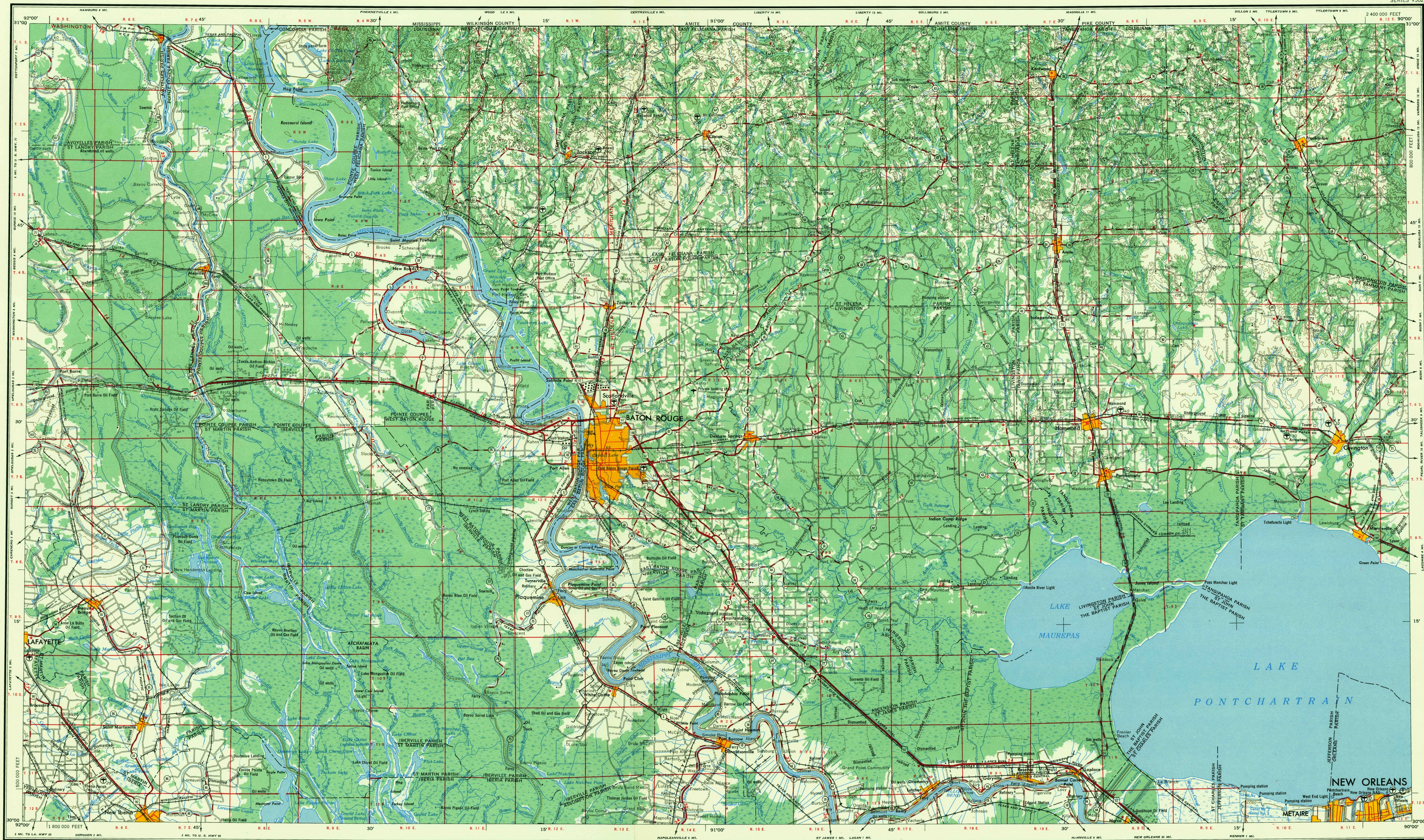


BATON ROUGE

U.S.G.S.
FILE COPY
TOPOGRAPHIC DIVISION

REFER TO THIS MAP AS: NH 15-6
SERIES V502



V502

Prepared by the Army Map Service (AMS), Corps of Engineers, U. S. Army, Washington, D. C. Compiled in 1954 by photogrammetric methods. Horizontal and vertical control by USCGS and USGS. Aerial photography 1952. Photography field annotated 1954.

LEGEND

Figures in red denote approximate distances in miles between stars

ROAD DATA 1955

POPULATED PLACES

Over 500,000	LOS ANGELES
100,000 to 500,000	OMAHA
25,000 to 100,000	GALVESTON
5,000 to 25,000	Lafayette
1,000 to 5,000	Grand Coulee
Less than 1,000	Sun Valley

RAILROADS

Standard gauge	Single track	Double or Multiple track
Narrow gauge		

BOUNDARIES

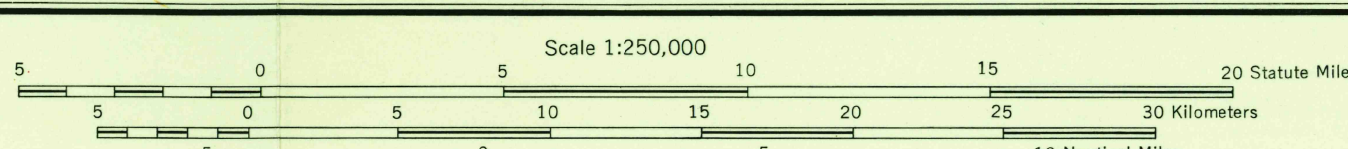
State	County
Parish	County
Park or reservation	

LANDMARKS

Landplane airport	Horizontal control point
Landing area	Spot elevation in feet
Seaplane airport	Marsh or swamp
Seaplane anchorage	Intermittent or dry stream
Woods-brushwood	Power line

Other symbols:

- Landmarks: School; Church; Other
- Horizontal control point
- Spot elevation in feet
- Marsh or swamp
- Intermittent or dry stream
- Power line



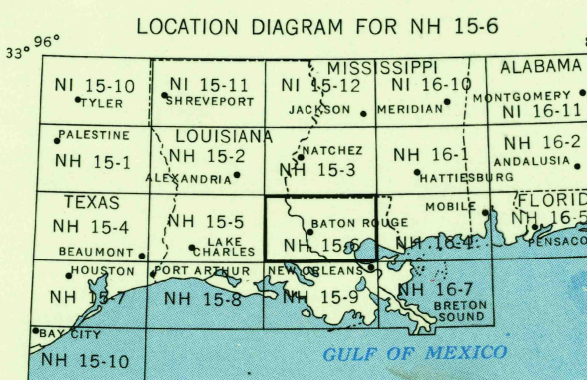
CONTOUR INTERVAL 50 FEET WITH SUPPLEMENTARY CONTOURS AT 25 FOOT INTERVALS

TRANSVERSE MERCATOR PROJECTION

100,000 FOOT GRID BASED ON LOUISIANA COORDINATE SYSTEM, SOUTH ZONE

1955 MAGNETIC DECLINATION FOR THIS SHEET VARIES FROM 6°45' EASTERLY FOR THE CENTER OF THE WEST EDGE TO 6°00' EASTERLY FOR THE CENTER OF THE EAST EDGE. MEAN ANNUAL CHANGE IS 0°01' WESTERLY.

FOR SALE BY U. S. GEOLOGICAL SURVEY, FEDERAL CENTER, DENVER, COLORADO OR WASHINGTON 25, D. C.



U.S.G.S.
FILE COPY
TOPOGRAPHIC DIVISION

PRINTED BY ARMY MAP SERVICE, CORPS OF ENGINEERS, 1-56, 91261

SECTIONIZED TOWNSHIP

6	5	4	3	2	1
7	8	9	10	11	12
18	17	16	15	14	13
19	20	21	22	23	24
30	29	28	27	26	25
31	32	33	34	35	36

BATON ROUGE, LA.; MISS.

JAN 12 1956 Printed by G.M.S. for 9.5

3000