

(Viguier Canal)
90° 22' 30"
29° 22' 30"
90° 15'
29° 22' 30"
29° 15'
90° 22' 30"

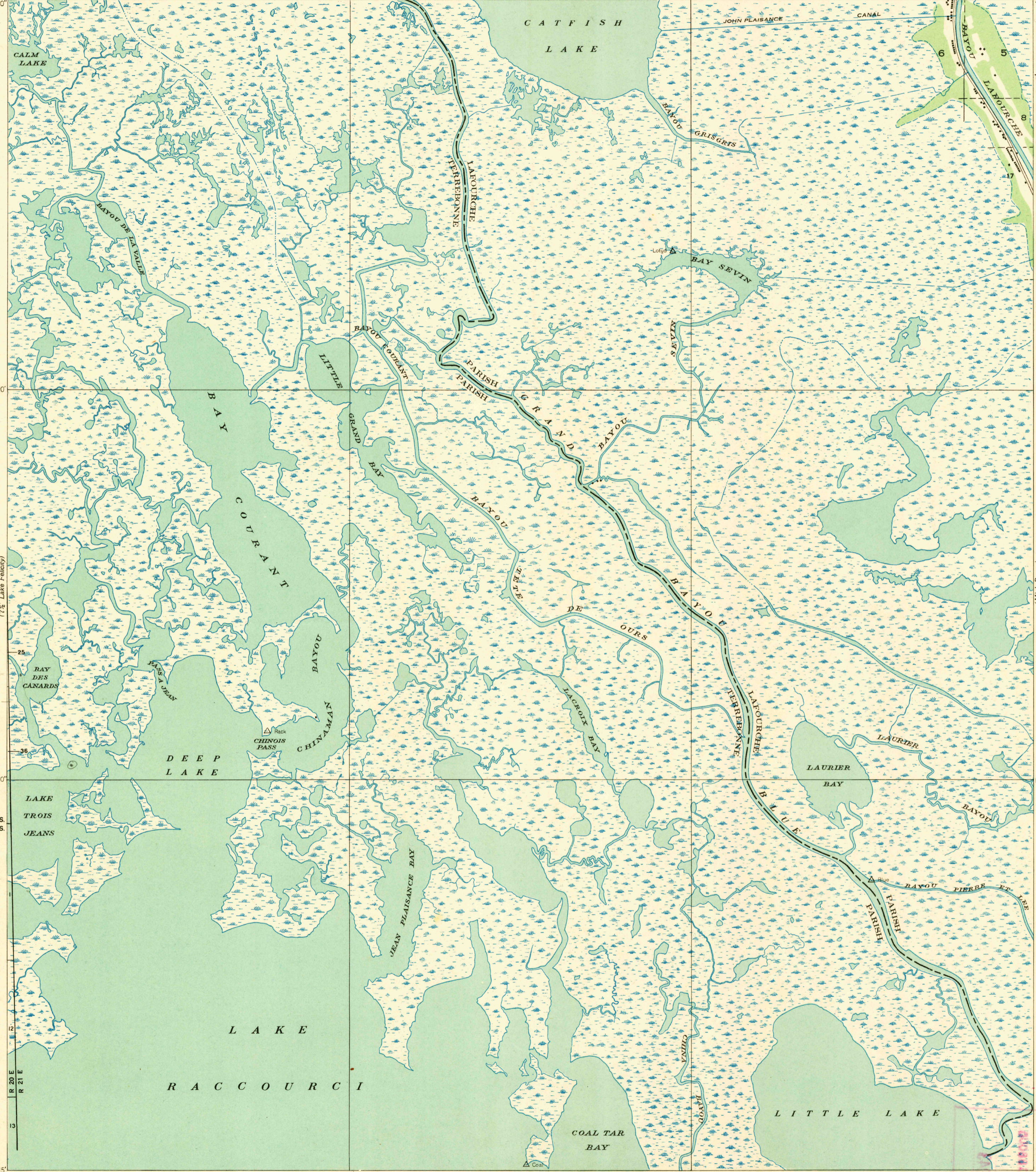
DEPARTMENT OF THE INTERIOR
U. S. GEOLOGICAL SURVEY

STATE OF LOUISIANA
BOARD OF STATE ENGINEERS
(Golden Meadow)

Advance sheet.
Subject to correction.

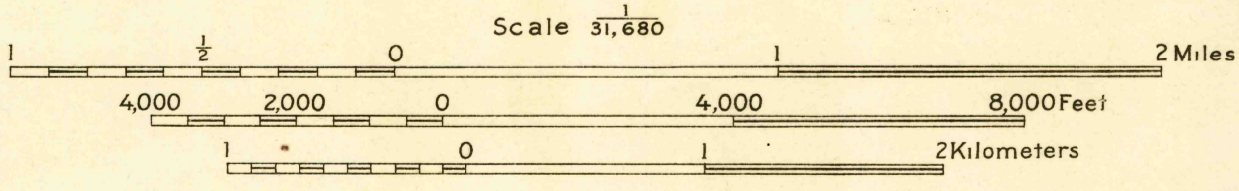
LOUISIANA
BAY COURANT QUADRANGLE

(Golden Meadow Farms)
T. 20 S.
(Mink Bayou)
90° 15'
29° 22' 30"
90° 15'



Glenn S. Smith, Division engineer
Compiled by U. S. Geological Survey and U. S. Coast and
Geodetic Survey from aerial photographs taken by Air Corps, U. S. Army
Control by U. S. Coast and Geodetic Survey
Field examination by U. S. Geological Survey in 1935

TRUE NORTH
MAGNETIC NORTH
APPROXIMATE MEAN
DECLINATION, 1935



Polygonic projection, 1927 North American datum
Land lines added from General Land Office
records adjusted to natural features and control
Township lines
Township lines, adjustment indefinite
Section lines
Section lines, adjustment indefinite
Grant lines
Grant lines, adjustment indefinite
Ditches
Shallow ditches

(Leavitt)