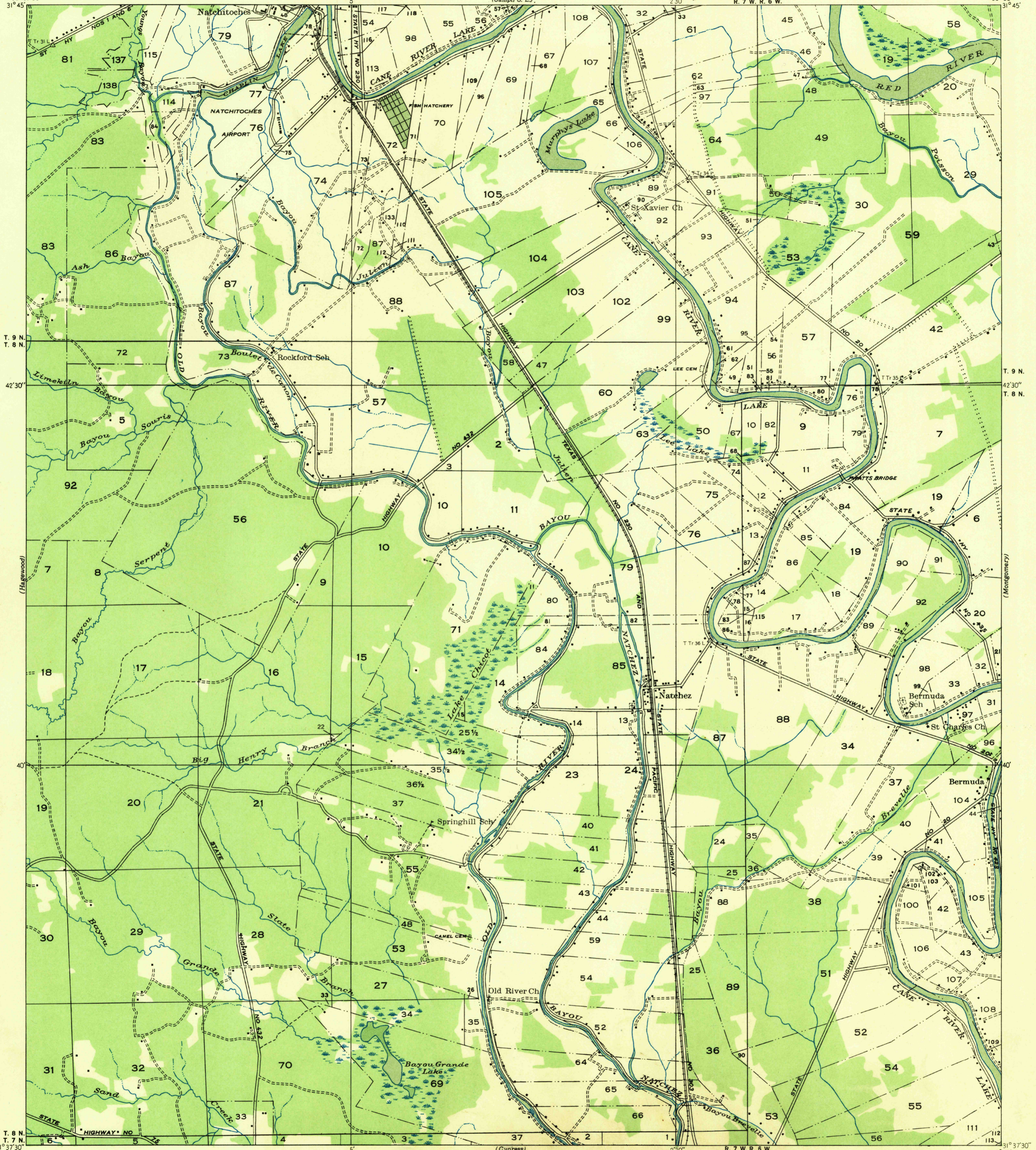
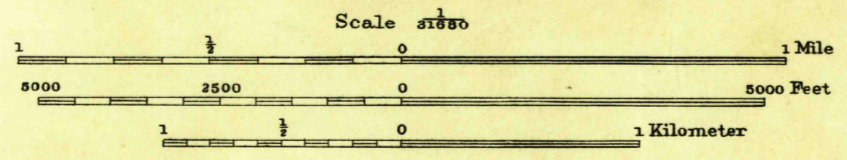


Unedited advance sheet
Subject to correction



Glenn S. Smith, Division Engineer
Compiled by Geological Survey from aerial photographs
Field examination in 1936-1937

71°
MAGNETIC NORTH
APPROXIMATE MEAN
DECLINATION, 1933



USGS
Historical File
Topographic Division

Polygonic projection, 1927 North American datum
Land lines added from General Land Office
records adjusted to natural features and control

U. S. G. S.
FILE COPY

BERMUDA, LA.