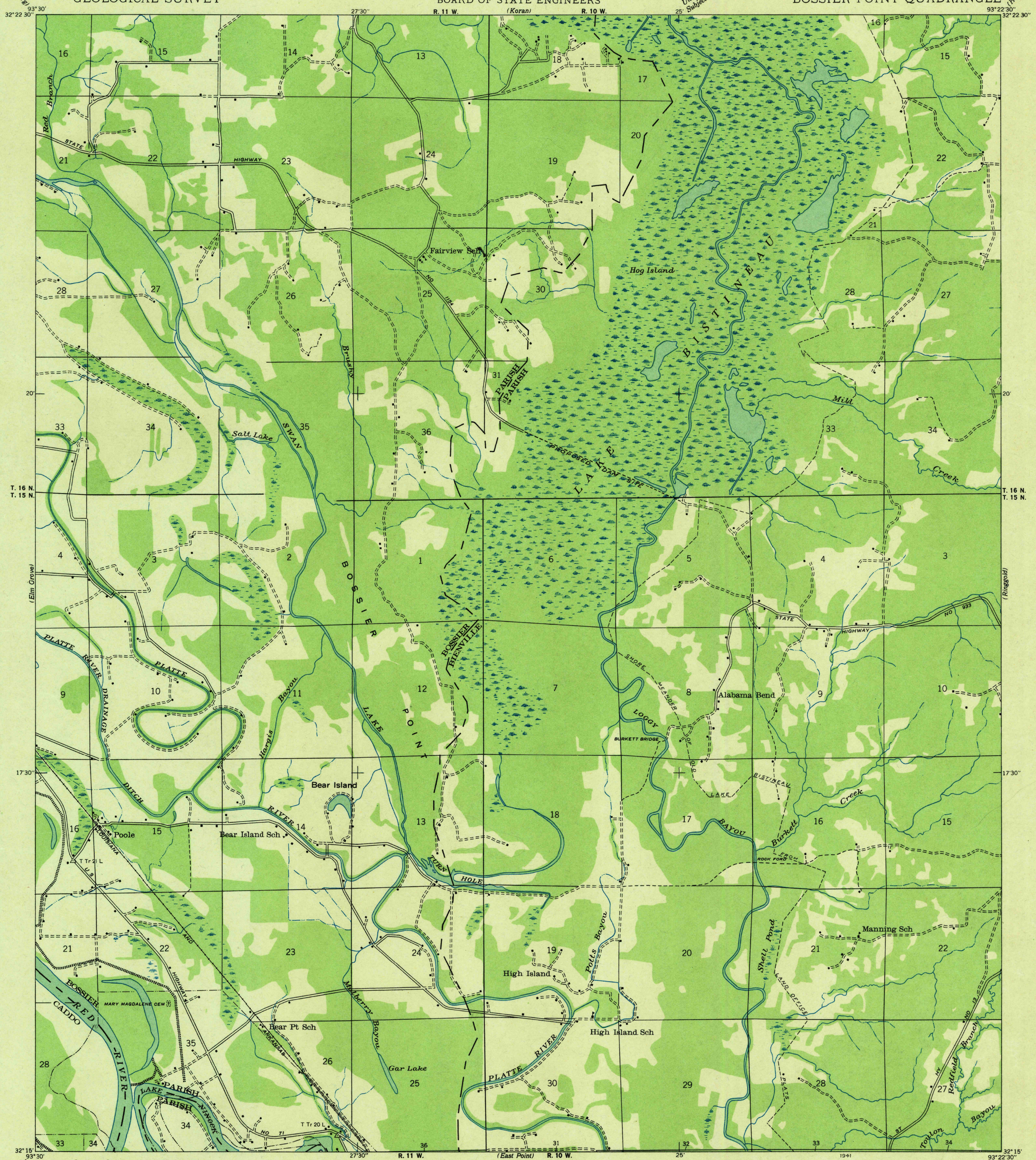


Ingersol

UNITED STATES  
DEPARTMENT OF THE INTERIOR  
GEOLOGICAL SURVEY

STATE OF LOUISIANA  
BOARD OF STATE ENGINEERS

LOUISIANA  
BOSSIER POINT QUADRANGLE



Uncredited advance sheet  
Subject to correction

(Hellen)

T. 16 N.  
T. 15 N.

T. 16 N.  
T. 15 N.

17°30'

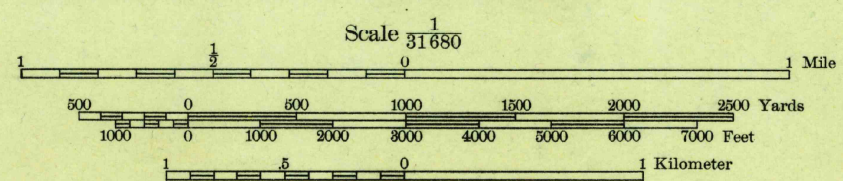
17°30'

32°15'

32°15'

Compiled by Geological Survey from aerial photographs  
Field examination in 1938

APPROXIMATE MEAN  
DECLINATION, 1938



USGS  
Historical File  
Topographic Division

Polygonic projection. 1927 North American datum  
Land lines added from General Land Office  
records adjusted to natural features and control

BOSSIER POINT, LA.  
N3215-W9322.5/7.5

U. S. G. S.  
FILE COPY  
Inspection and Editing.