

(Colfax) 62500

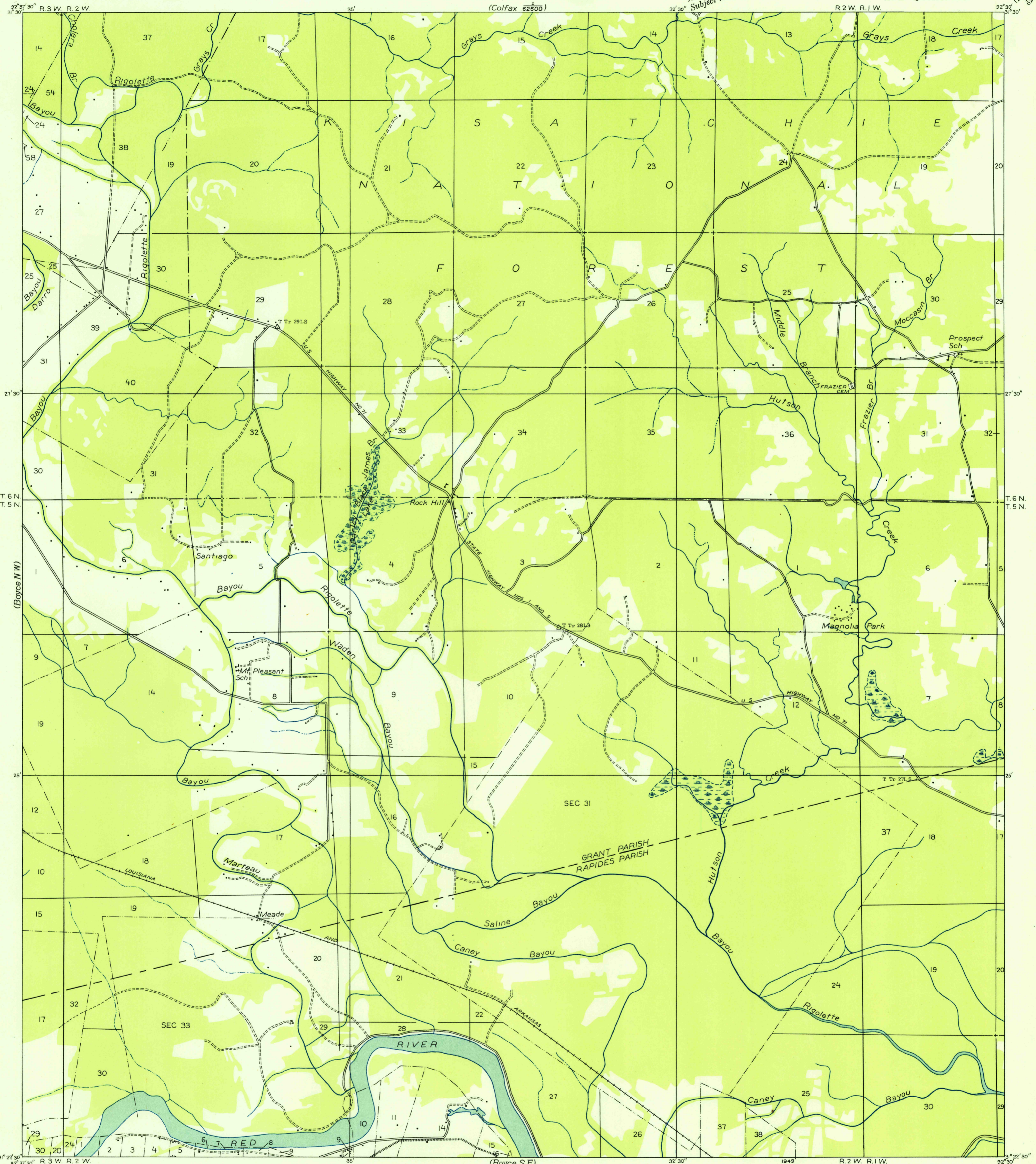
UNITED STATES DEPARTMENT OF THE INTERIOR GEOLOGICAL SURVEY

U. S. G. S. FILE COPY Inspection and Editing.

STATE OF LOUISIANA BOARD OF STATE ENGINEERS

LOUISIANA BOYCE QUADRANGLE (NE QUARTER)

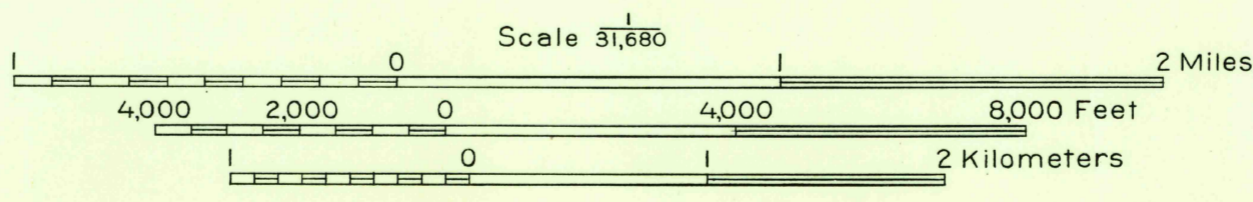
(Pollock) 62500



Advance sheet Subject to correction

Glenn S. Smith, Division Engineer
Compiled by U. S. Geological Survey after field examination
of aerial photographs taken by Air Corps, U. S. Army
Control by U. S. Geological Survey
Field examination in 1932

TRUE NORTH
MAGNETIC NORTH
APPROXIMATE MEAN
DECLINATION, 1932



USGS Historical File Topographic Division

Polyconic projection, 1927 North American datum
Land lines added from General Land Office records adjusted to natural features and control
Township lines, adjustment indefinite
Section lines, adjustment indefinite
Grant lines, adjustment indefinite
Ditches
Shallow ditches

U. S. G. S. FILE COPY Inspection and Editing.

BOYCE, LA. (N E)

N 31225-W 9230/75

SEP 22 1949

1110