

U.S.G.S.
FILE COPY
Inspection and Editing.

UNITED STATES
DEPARTMENT OF THE INTERIOR
GEOLOGICAL SURVEY

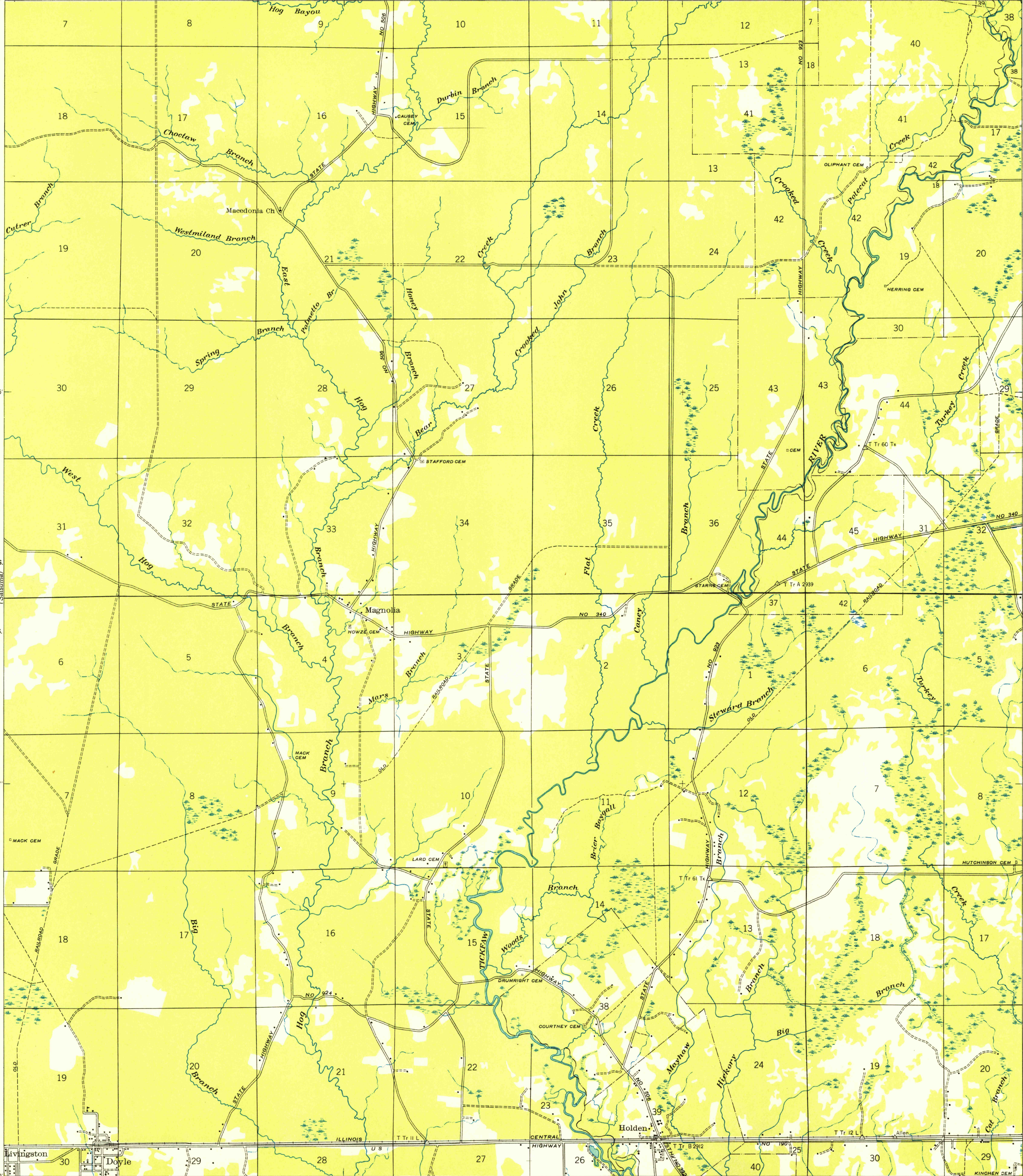
STATE OF LOUISIANA
DEPARTMENT OF PUBLIC WORKS
BATON ROUGE
(Montpelier)

LOUISIANA
(LIVINGSTON PARISH)
DOYLE QUADRANGLE
7 1/2 MINUTE SERIES

Unedited advance sheet
Subject to correction

R. 5 E. R. 6 E.

(Amite)

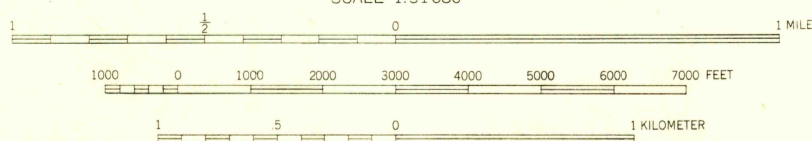


Compiled by Geological Survey from aerial photographs
Field examination in 1940

TRUE NORTH
MAGNETIC NORTH
APPROXIMATE MEAN
DECLINATION 1940

(Springfield 1:62500)

SCALE 1:31680



R. 5 E. R. 6 E.

1950

Polyconic projection. 1927 North American datum
Land lines added from General Land Office
records adjusted to natural features and control

USGS
Historical File
Topographic Division
Inspection and Editing.

DOYLE, LA.
N 3030—W 9037.5/7.5

JAN 24 1950

1075