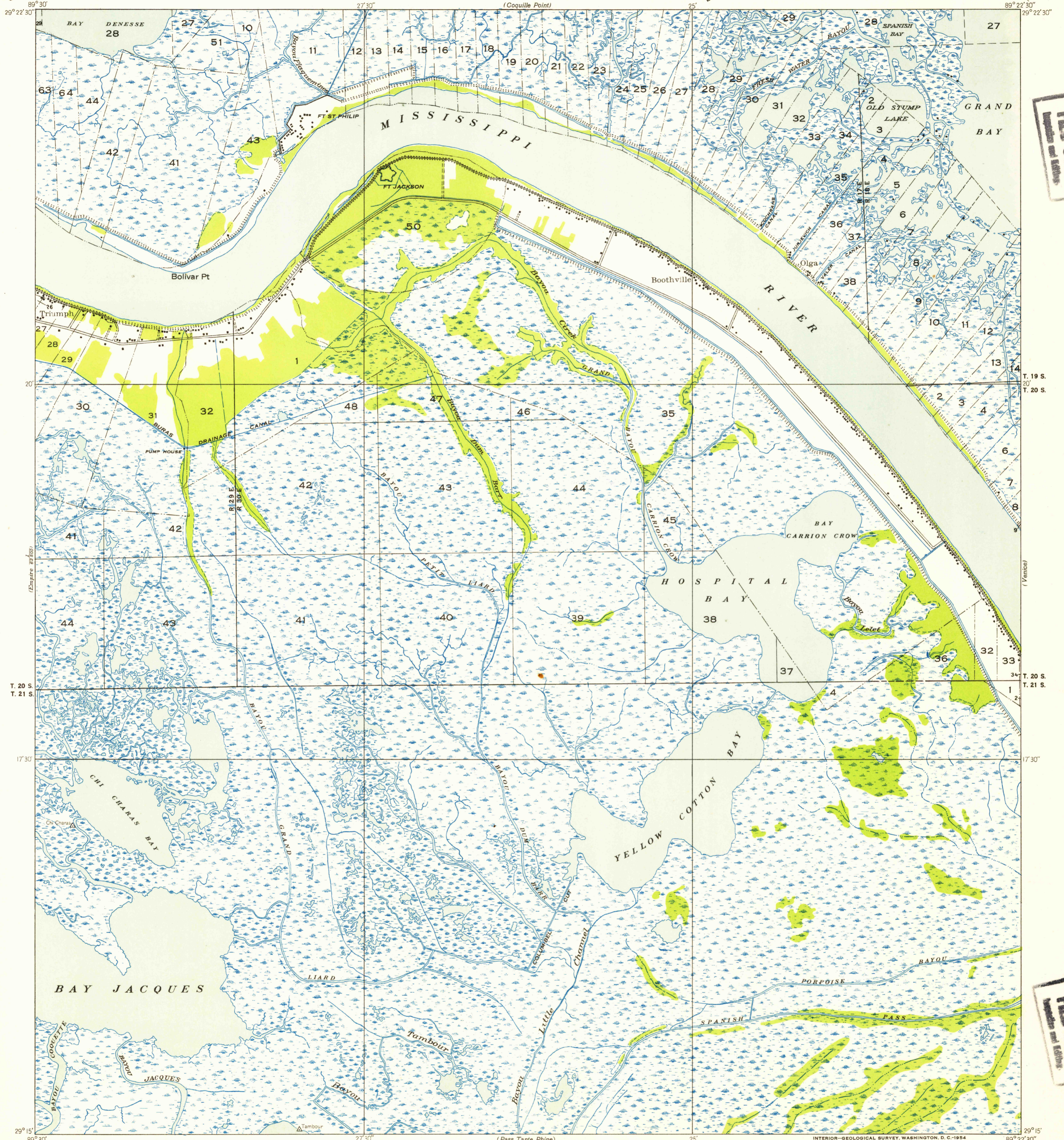


(Empire)
62-300

Advance sheet.
Subject to correction.

(Taylor Pass)

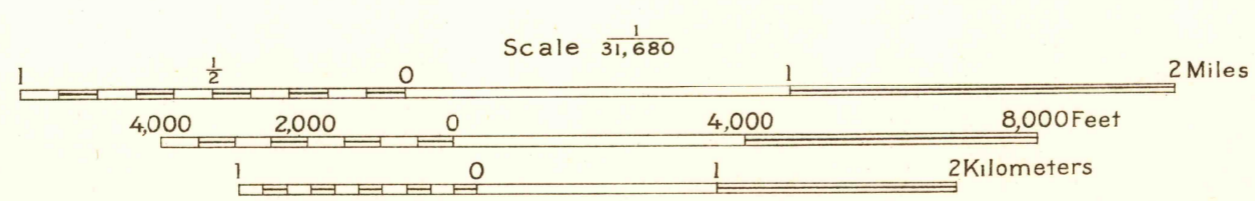


FILE COPY
Lands and Editions

FILE COPY
Lands and Editions

Glenn S. Smith, Division Engineer
Compiled by U. S. Geological Survey and U. S. Coast and
Geodetic Survey from aerial photographs taken by Air Corps, U. S. Army
Control by U. S. Coast and Geodetic Survey
Field examination by U. S. Geological Survey in 1935

TRUE NORTH
MAGNETIC NORTH
APPROXIMATE MEAN
DECLINATION, 1955



USGS
Historical File
Topographic Division

Polyconic projection, 1927 North American datum
Land lines added from General Land Office
records adjusted to natural features and control

| | |
|---------------------------------------|---------|
| Township lines | --- |
| Township lines, adjustment indefinite | - - - - |
| Section lines | --- |
| Section lines, adjustment indefinite | - - - - |
| Grant lines | --- |
| Grant lines, adjustment indefinite | - - - - |
| Ditches | --- |
| Shallow ditches | - - - - |

FORT ST. PHILIP, LA.

N 2915 - W 8922.5 / 7.5

(Gulis Gap)

JUN 2 1954
1080