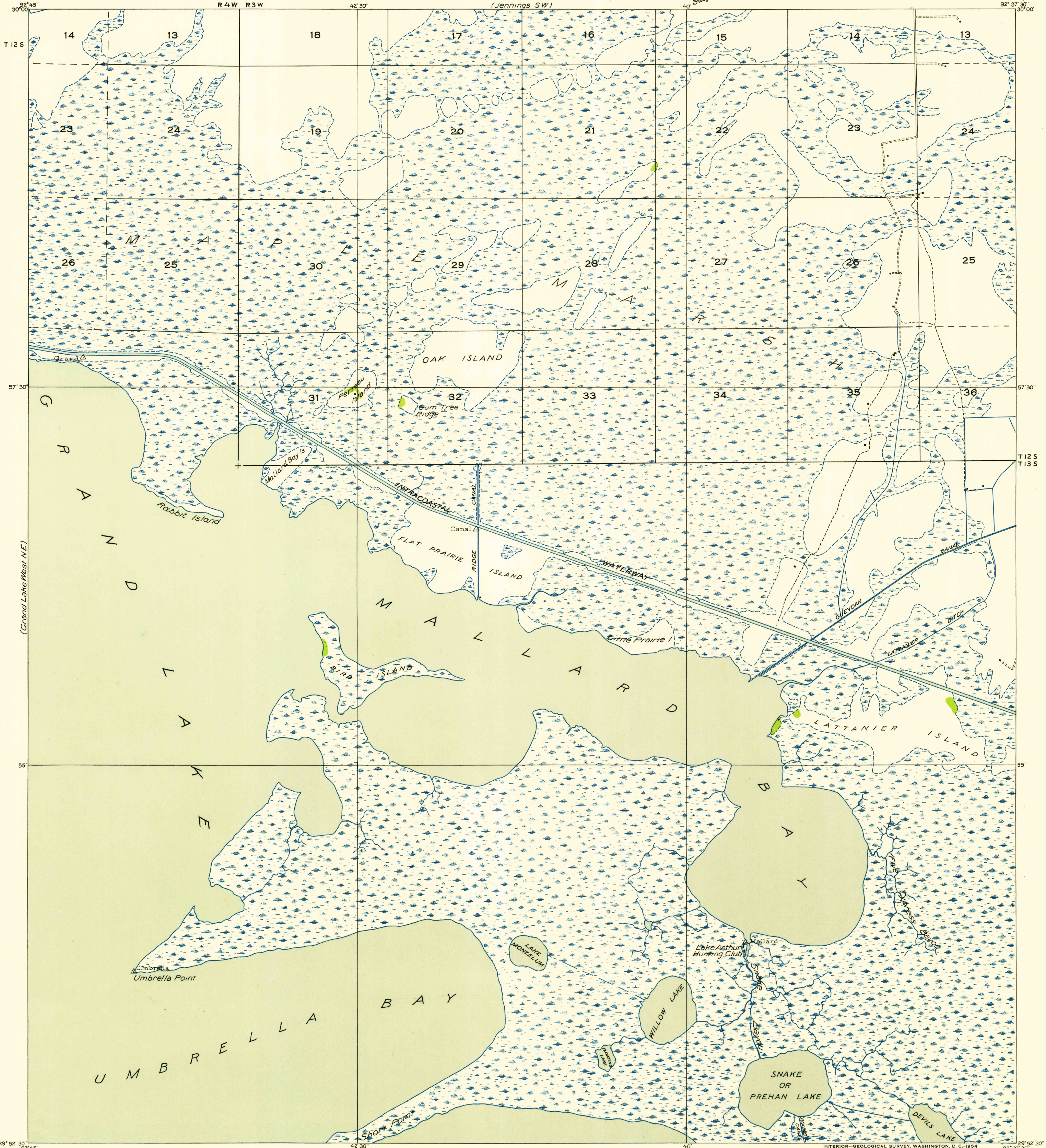
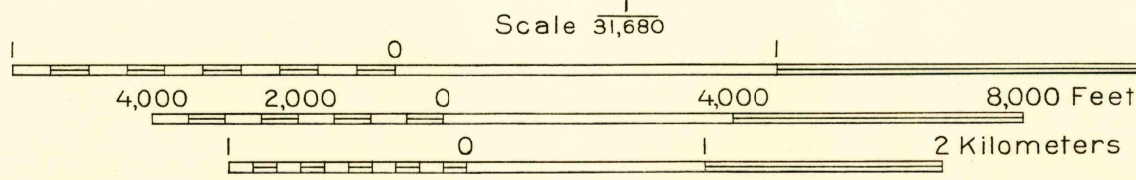


Advance sheet.
Subject to correction.



Glen S. Smith, Division Engineer
Compiled by U. S. Geological Survey after field examination
of aerial photographs taken by Air Corps, U. S. Army
Control by U. S. Geological Survey and U. S. Coast and Geodetic Survey
Field examination in 1932

TRUE NORTH
MAGNETIC NORTH
APPROXIMATE MEAN
DECLINATION, 1932



USGS
Historical File
Topographic Division
U. S. G. S.
FILE COPY
Inspection and Control

Interior-Geological Survey, Washington, D. C., 1934
M. R. 3558
Polyconic projection. 1927 North American datum
Land lines added from General Land Office
records adjusted to natural features and control

Township lines, adjustment indefinite
Section lines, adjustment indefinite
Grant lines, adjustment indefinite
Grant lines, adjustment indefinite
Ditches
Shallow ditches

GRAND LAKE EAST, LA
(N W)

MAY 14 1954

1050