

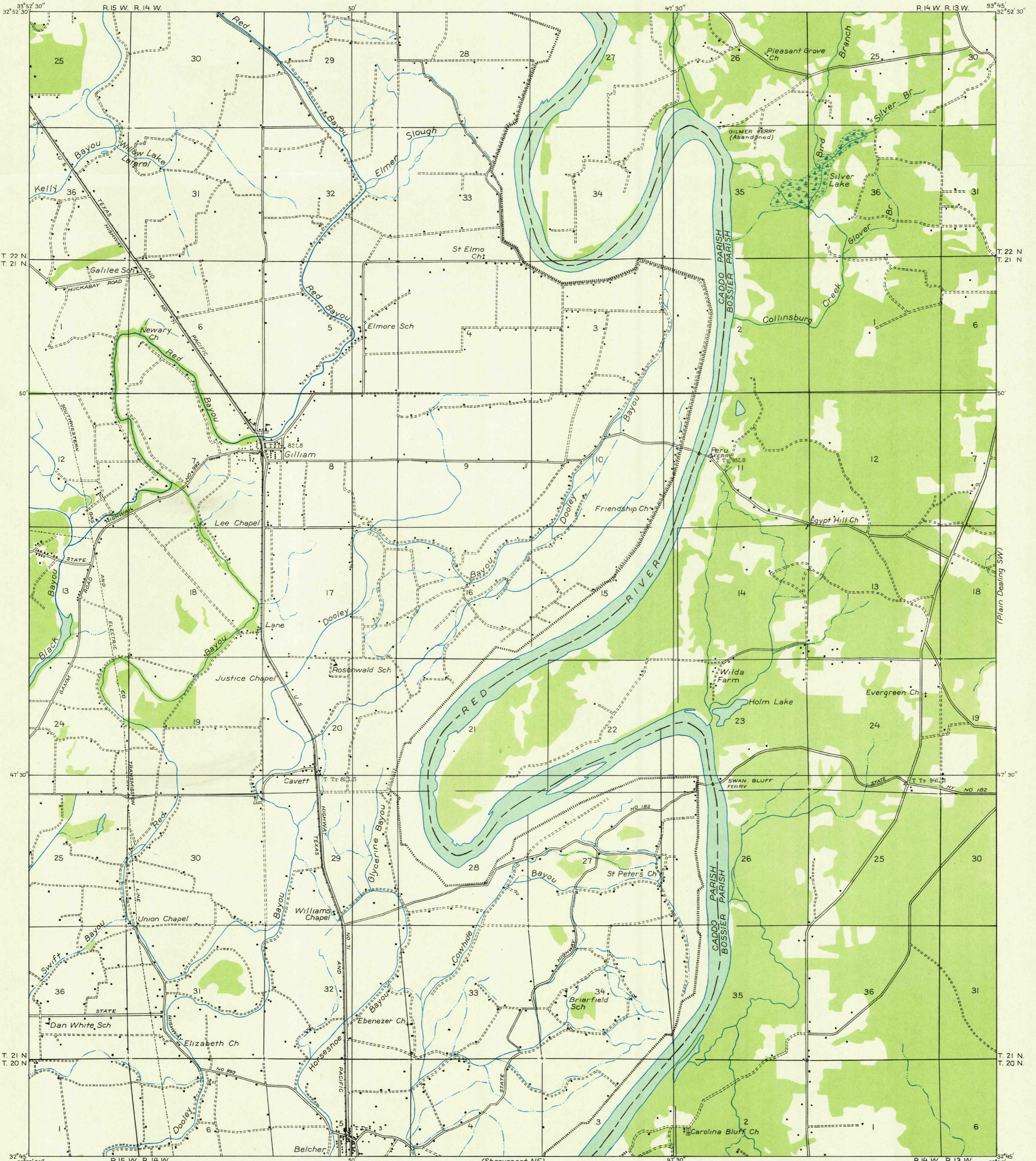
DEPARTMENT OF THE INTERIOR
U. S. GEOLOGICAL SURVEY

STATE OF LOUISIANA
BOARD OF STATE ENGINEERS
HARRY JACOBS, CHIEF ENGINEER

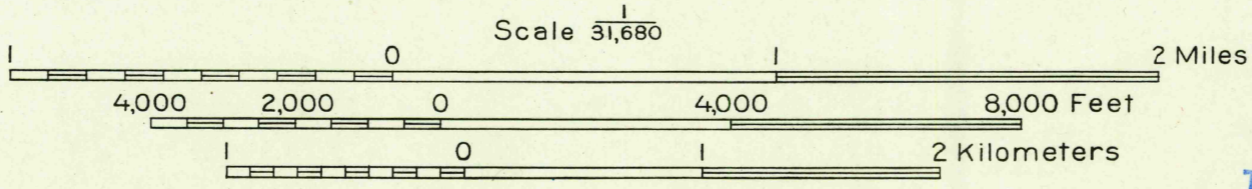
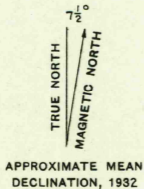
LOUISIANA
HOSSTON QUADRANGLE
(S E QUARTER)

Advance sheet
Subject to correction

(Plain Dealing NW)



Glenn S. Smith, Division Engineer
Compiled by U. S. Geological Survey after field examination
of aerial photographs taken by Air Corps, U. S. Army
Control by U. S. Geological Survey
Field examination in 1932



USGS
Historical File
Topographic Division

Polygonic projection. 1927 North American datum
Land lines added from General Land Office
records adjusted to natural features and control

- Township lines
- Township lines, adjustment indefinite
- Section lines
- Section lines, adjustment indefinite
- Grant lines
- Grant lines, adjustment indefinite
- Ditches
- Shallow ditches

HOSSTON, LA.
(S E)

(Plain Dealing SW)

(Bossier NW)