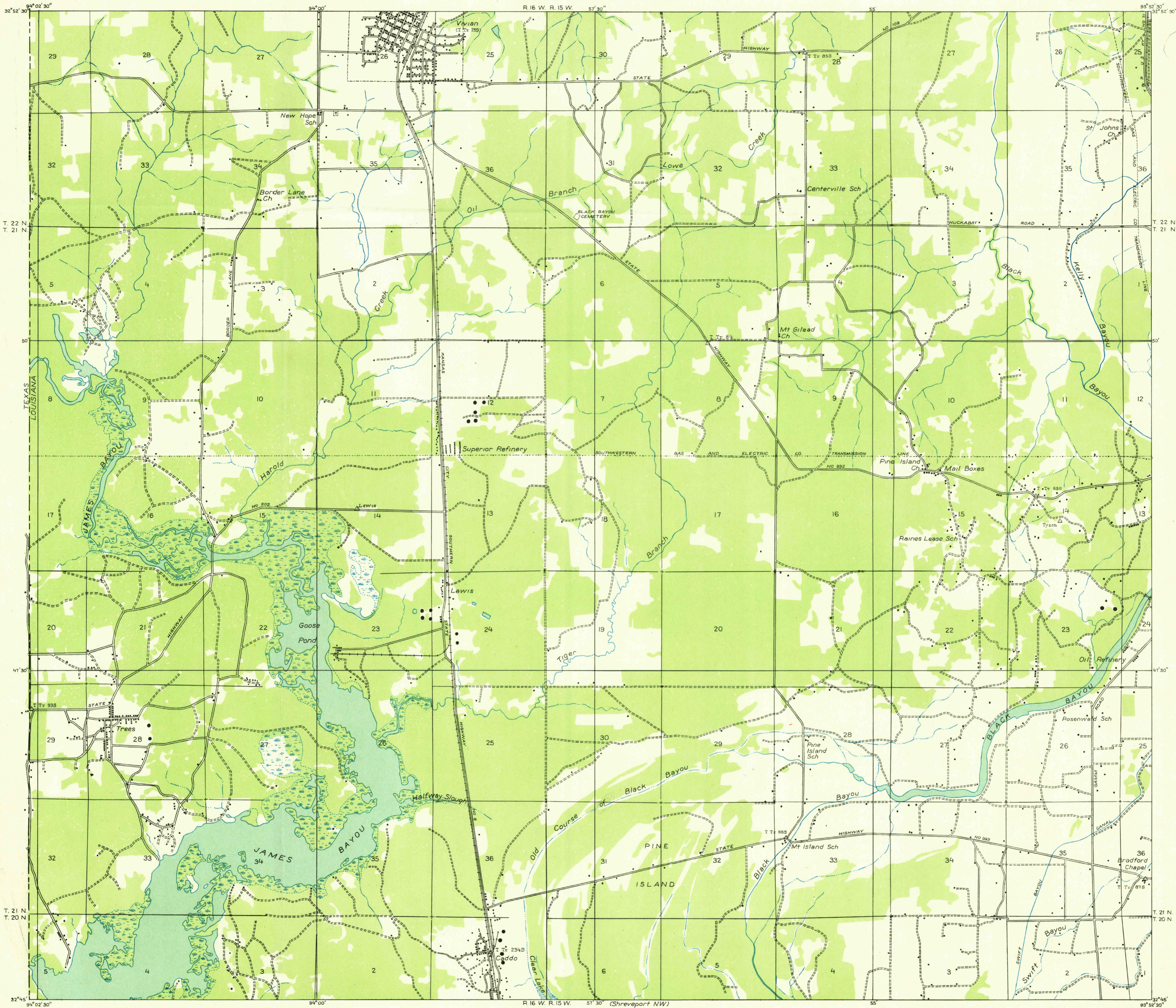


DEPARTMENT OF THE INTERIOR  
 U. S. GEOLOGICAL SURVEY

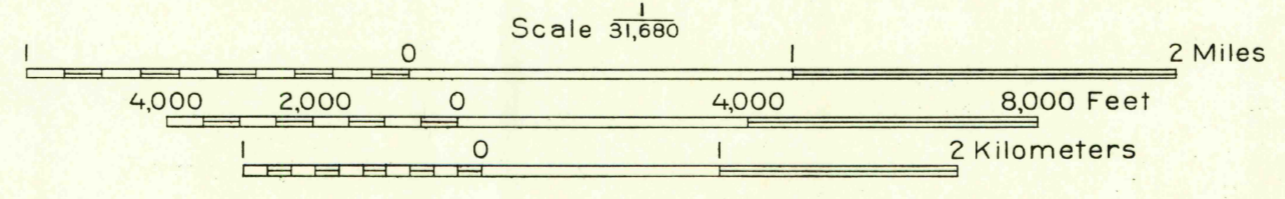
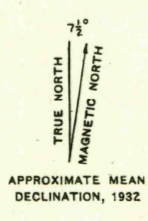
STATE OF LOUISIANA  
 BOARD OF STATE ENGINEERS  
 HARRY JACOBS, CHIEF ENGINEER

Advance sheet  
 Subject to correction

LOUISIANA  
 (CADDO PARISH)  
**HOSSTON QUADRANGLE**  
 (S W QUARTER)



Glenn S. Smith, Division Engineer  
 Compiled by U. S. Geological Survey after field examination  
 of aerial photographs taken by Air Corps, U. S. Army  
 Control by U. S. Geological Survey and U. S. Coast and Geodetic Survey  
 Field examination in 1932



USGS  
 Historical File  
 Topographic Division

Polyconic projection, 1927 North American datum  
 Land lines added from General Land Office  
 records adjusted to natural features and control

|                                       |     |
|---------------------------------------|-----|
| Township lines, adjustment indefinite | --- |
| Section lines                         | --- |
| Section lines, adjustment indefinite  | --- |
| Grant lines                           | --- |
| Grant lines, adjustment indefinite    | --- |
| Ditches                               | --- |
| Shallow ditches                       | --- |

HOSSTON, LA.  
 (S W)