

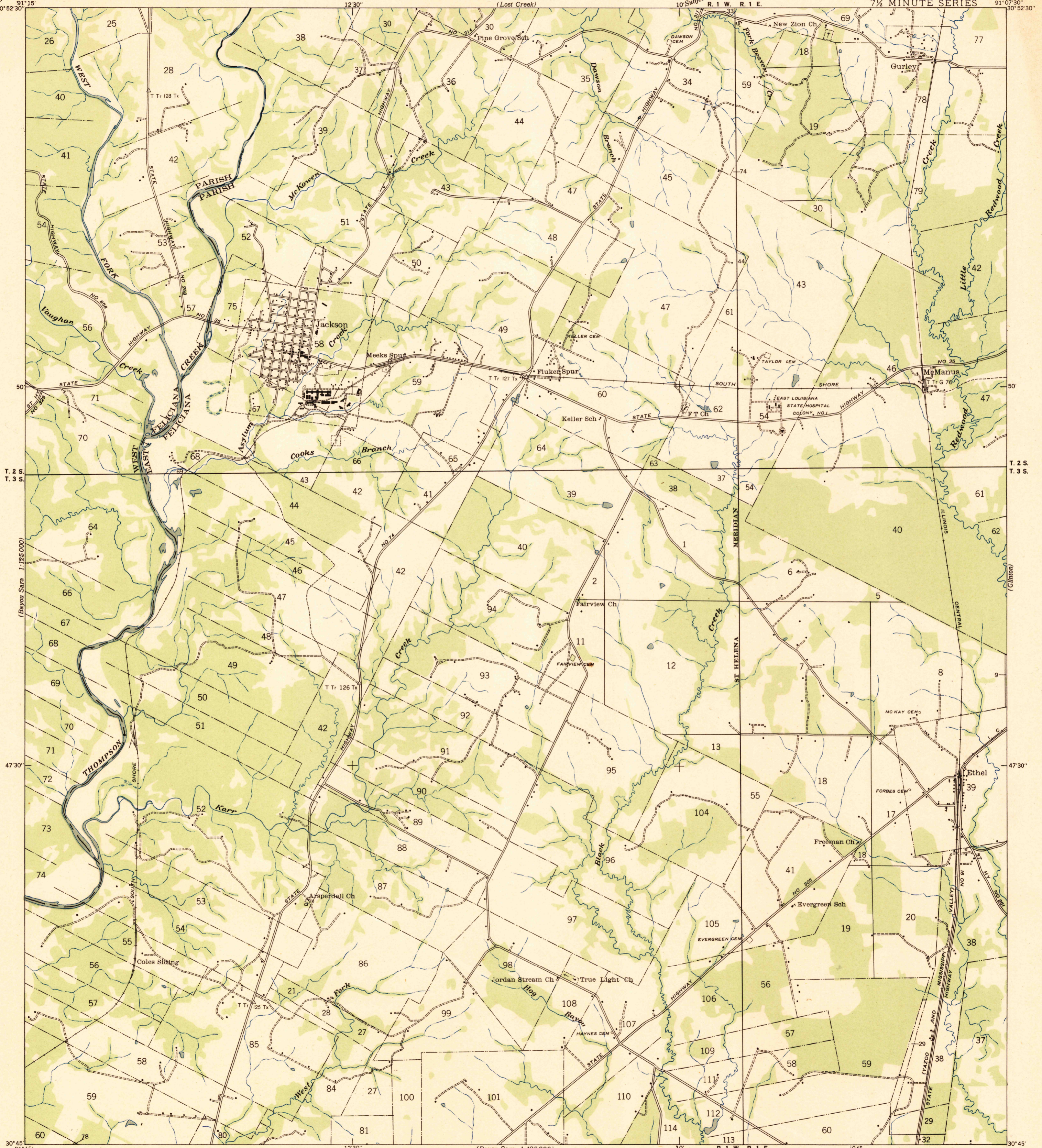
(Bayou Sara)
1:25,000

UNITED STATES
DEPARTMENT OF THE INTERIOR
GEOLOGICAL SURVEY

STATE OF LOUISIANA
DEPARTMENT OF PUBLIC WORKS
BATON ROUGE

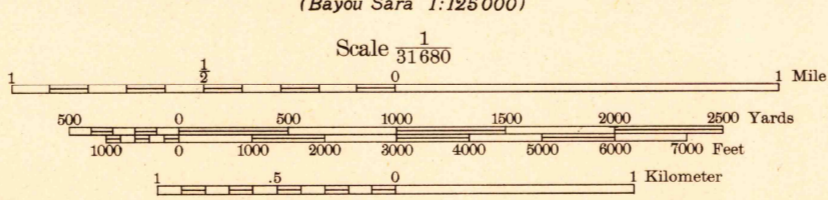
LOUISIANA
JACKSON QUADRANGLE
7 1/2 MINUTE SERIES

(Norwood)
1:25,000



Compiled by Geological Survey from aerial photographs
Field examination in 1941

TRUE NORTH
MAGNETIC NORTH
APPROXIMATE MEAN
DECLINATION, 1941



Polyconic projection. 1927 North American datum
Land lines added from General Land Office
records adjusted to natural features and control

USGS
Historical File
Topographic Division

JACKSON, LA.
N 3045-W 9107.5/7.5

(Bayou Sara)
1:25,000

(Bayou Sara)
1:25,000