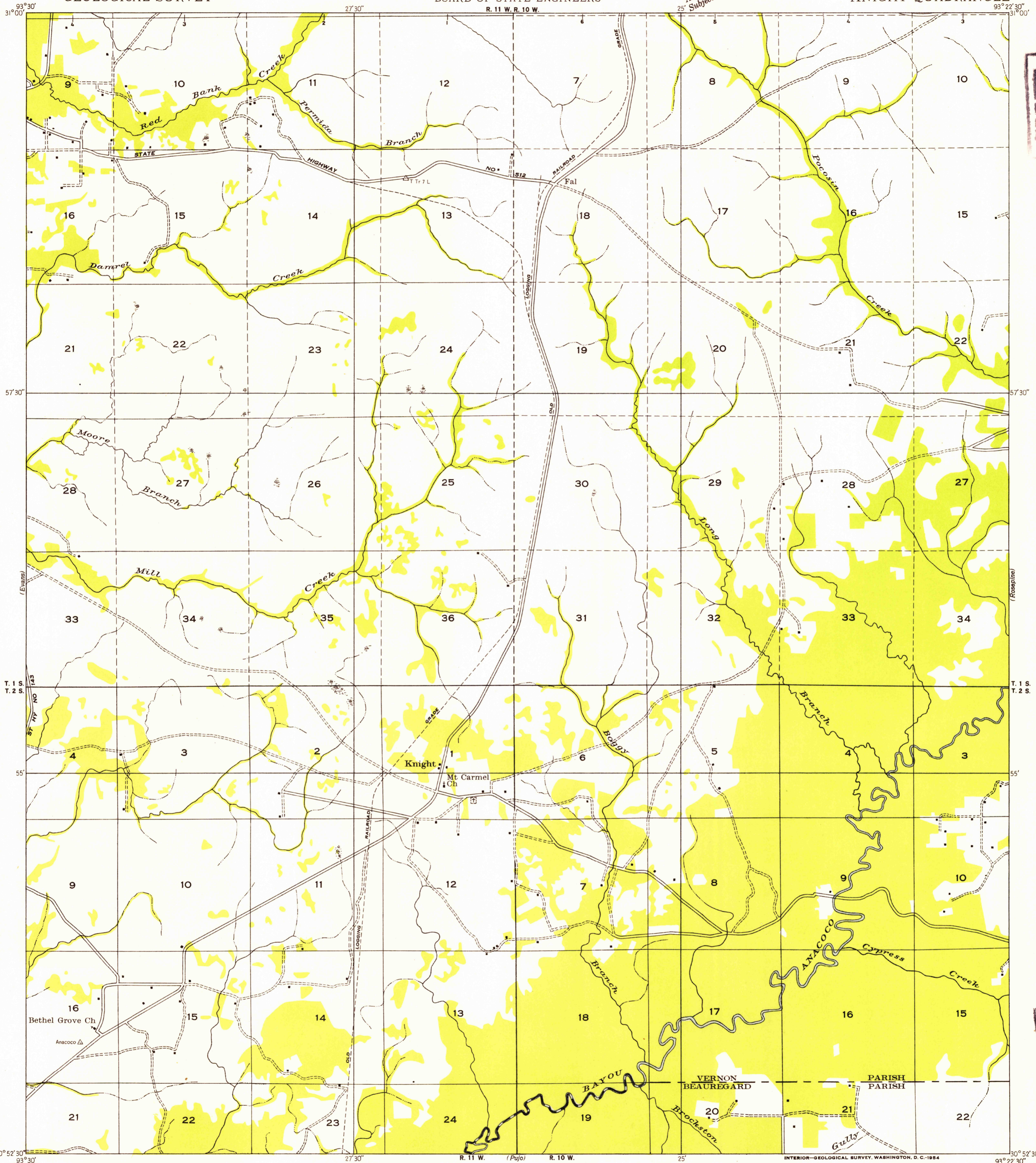


Advance sheet.
25' Subject to correction.

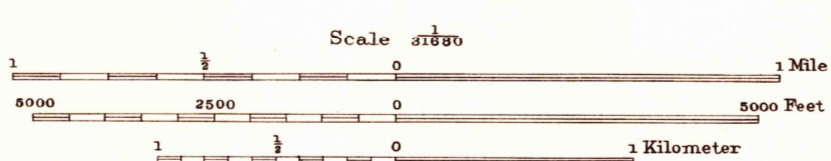


FILE COPY

FILE COPY

Glenn S. Smith, Division Engineer
Compiled by Geological Survey from aerial photographs
Field examination in 1935

TRUE NORTH
MAGNETIC NORTH
APPROXIMATE MEAN
DECLINATION, 1935



USGS
Historical File
Topographic Division

Polyconic projection, 1927 North American datum
Land lines adapted from General Land Office
records adjusted to natural features and control
Township lines, adjustment indefinite
Section lines, adjustment indefinite

KNIGHT, LA.
N 3052.5 - W 9322.5/7.5

AUG 5 1954

1090