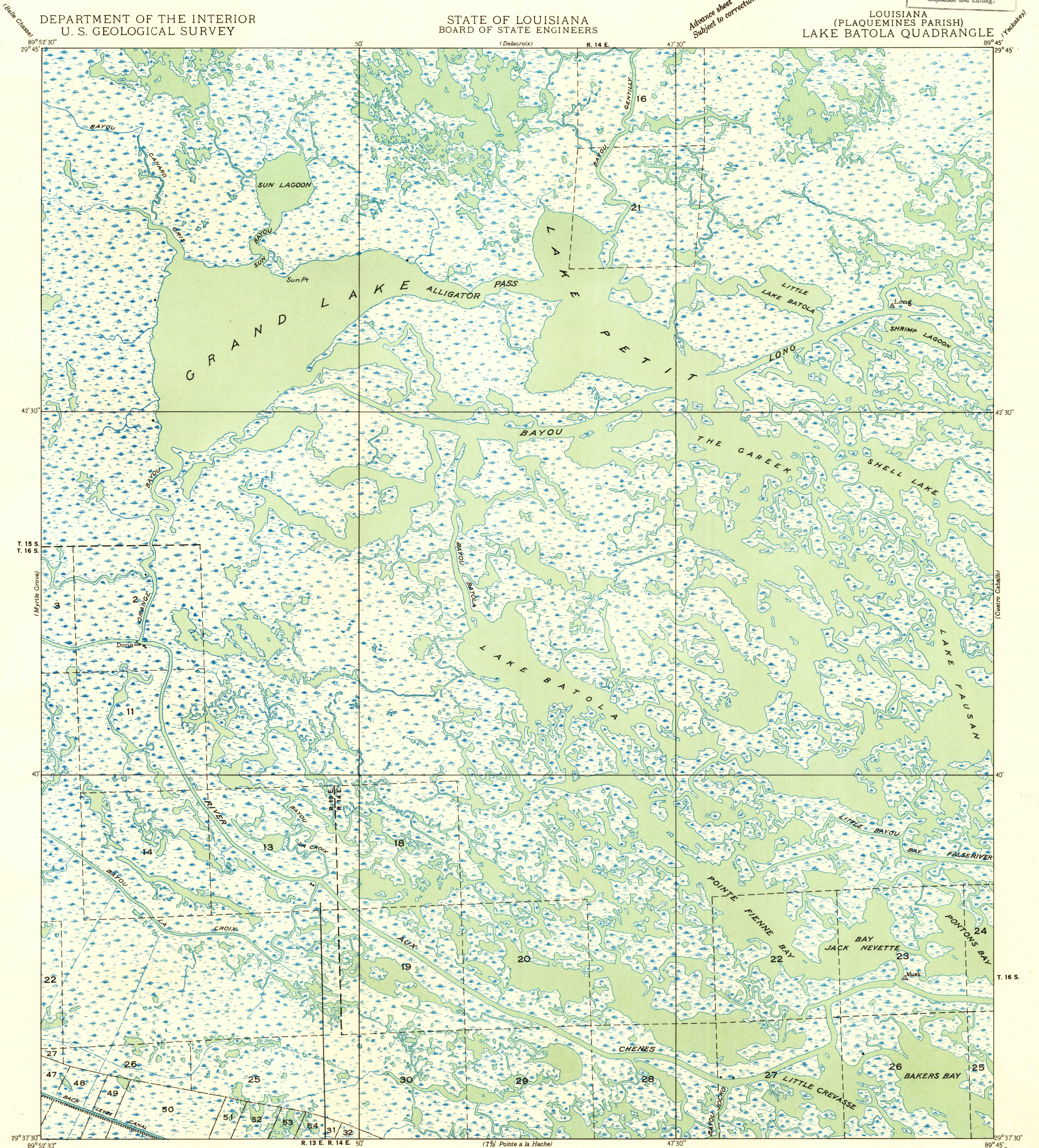


DEPARTMENT OF THE INTERIOR
U. S. GEOLOGICAL SURVEY

STATE OF LOUISIANA
BOARD OF STATE ENGINEERS

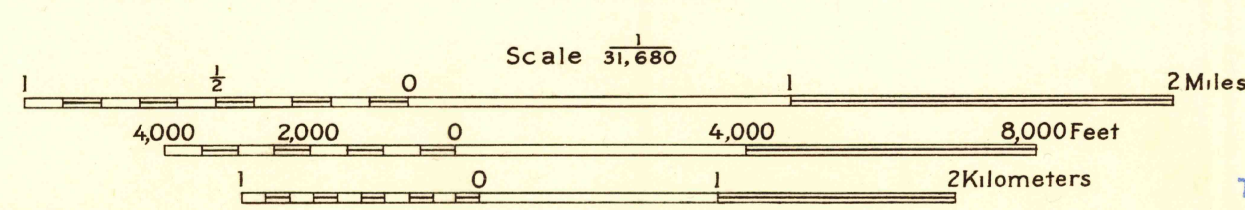
LOUISIANA
(PLAQUEMINES PARISH)
LAKE BATOLA QUADRANGLE

Advance sheet
Subject to correction



Glenn S. Smith, Division Engineer
Compiled by U. S. Geological Survey after field examination
of aerial photographs taken by Air Corps, U. S. Army
Control by U. S. Geological Survey and U. S. Coast and Geodetic Survey
Field examination in 1935

TRUE NORTH
MAGNETIC NORTH
APPROXIMATE MEAN
DECLINATION, 1935



USGS
Historical File
Topographic Division

Polyconic projection. 1927 North American datum
Land lines added from General Land Office
records adjusted to natural features and control

Township lines	---
Township lines, adjustment indefinite	---
Section lines	---
Section lines, adjustment indefinite	---
Grant lines	---
Grant lines, adjustment indefinite	---
Ditches	---
Shallow ditches	---