

(False Mouth Bayou)

UNITED STATES
DEPARTMENT OF THE INTERIOR
GEOLOGICAL SURVEY

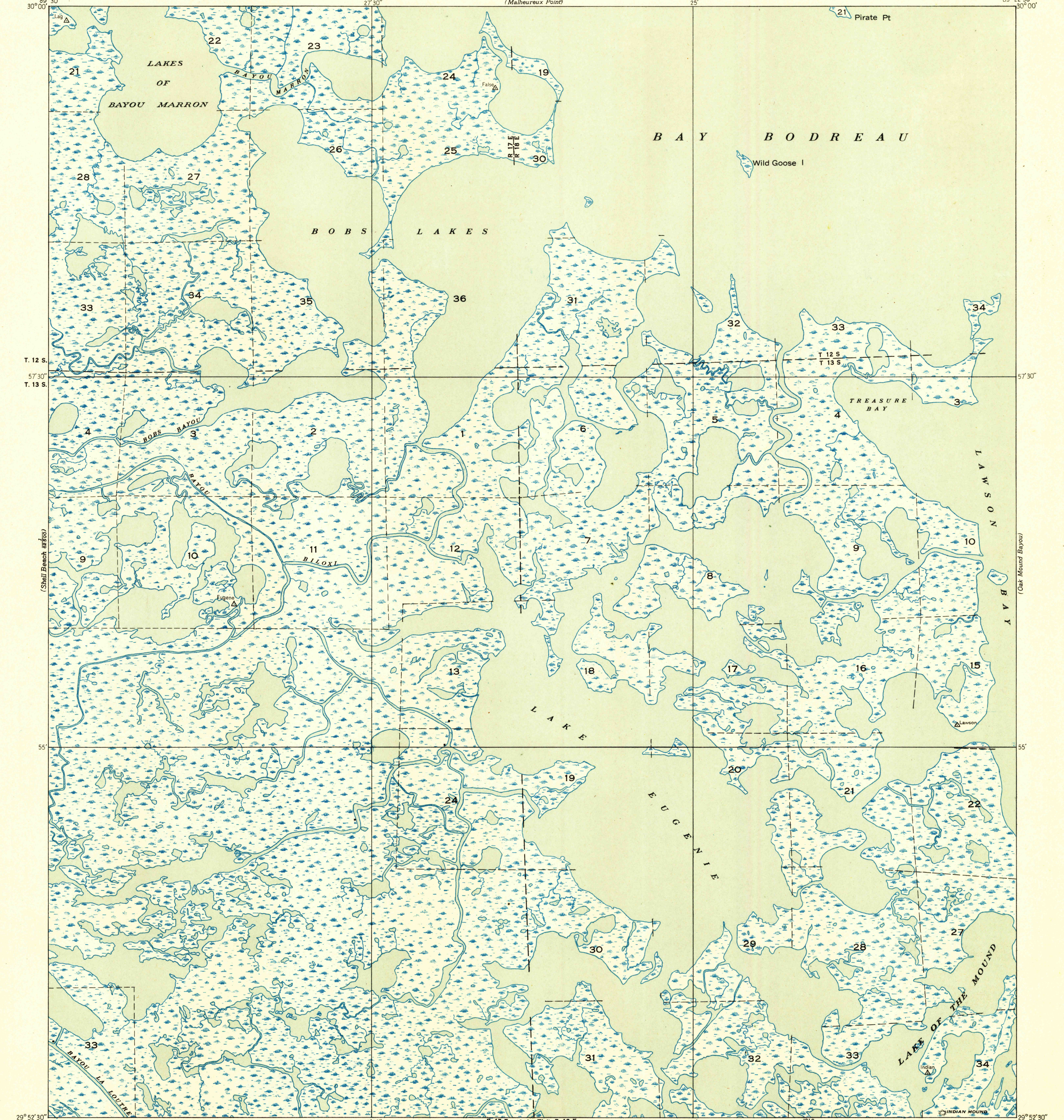
STATE OF LOUISIANA
BOARD OF STATE ENGINEERS

U. S. G. S.
FILE COPY
Inspection and Editing.

Advance sheet.
Subject to correction.

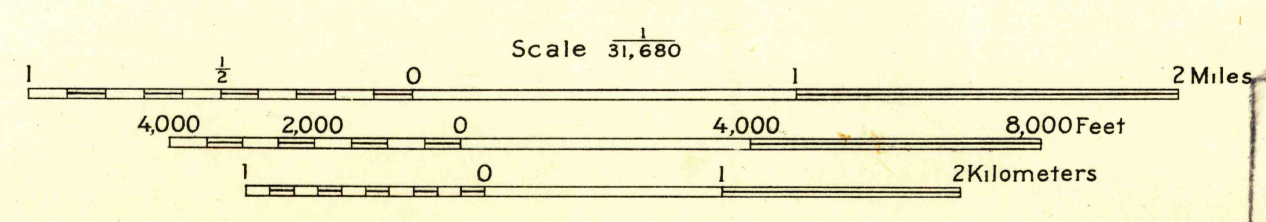
LOUISIANA
(ST. BERNARD PARISH)
LAKE EUGENIE QUADRANGLE

(Drum Bay)



Glenn S. Smith, Division engineer
Compiled by U. S. Geological Survey and U. S. Coast and
Geodetic Survey from aerial photographs taken by Air Corps, U. S. Army
Control by U. S. Coast and Geodetic Survey
Field examination by U. S. Geological Survey in 1935

TRUE NORTH
MAGNETIC NORTH
APPROXIMATE MEAN
DECLINATION, 1955



USGS
Historical File
Topographic Division
Inspection and Editing.

Polyconic projection. 1927 North American datum
Land lines added from General Land Office
records adjusted to natural features and control
Township lines
Township lines, adjustment indefinite
Section lines
Section lines, adjustment indefinite
Grant lines
Grant lines, adjustment indefinite
Ditches
Shallow ditches

LAKE EUGENIE, LA.

N 2952.5-W 8922.5/7.5

AUG 15 1946