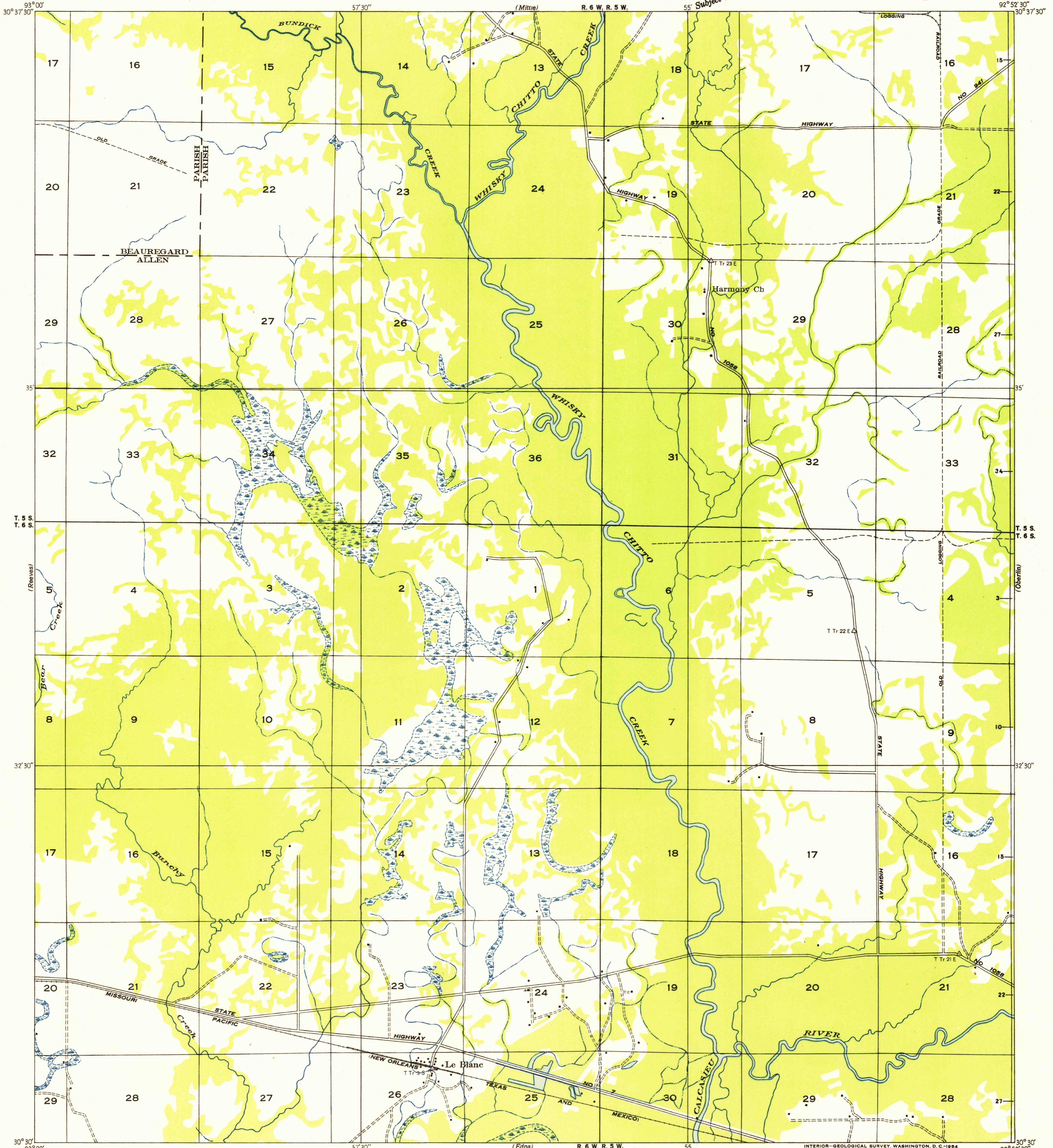


FILE COPY  
1:50,000

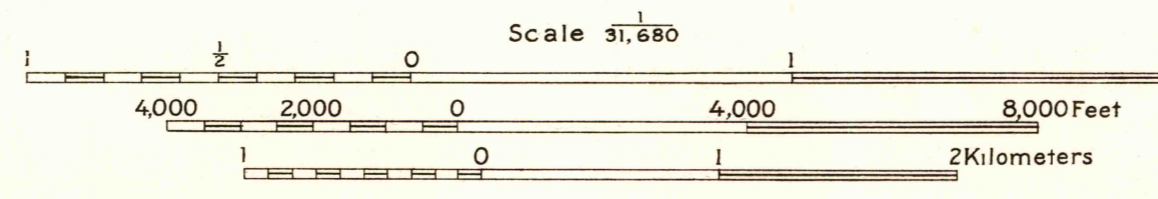
Advance sheet.  
Subject to correction.

(Pine Chapel)



Glenn S. Smith, Division Engineer  
Compiled by Geological Survey from aerial photographs  
Field examination in 1935

TRUE NORTH  
MAGNETIC NORTH  
APPROXIMATE MEAN  
DECLINATION, 1955



USGS  
Historical File  
Topographic Division

FILE COPY  
1:50,000

LE BLANC, LA.  
N 3030-W9252.5/7.5

AUG 3 1954  
1100