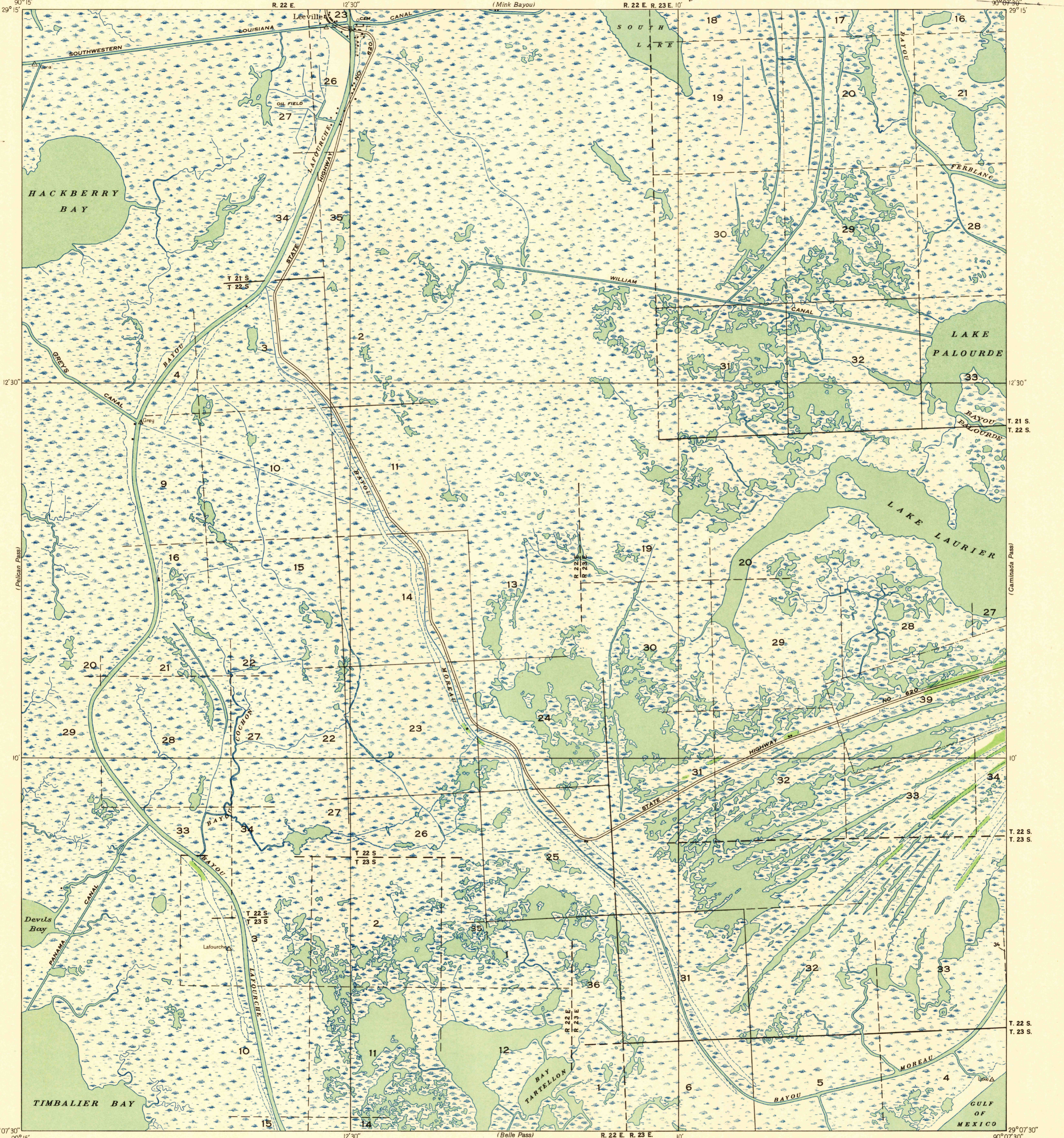


Advance sheet.
Subject to correction.

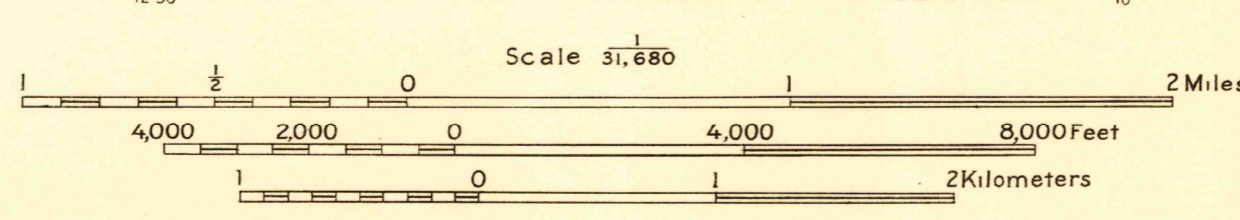


(Bay Current)
90° 15'
29° 15'
90° 07' 30"
90° 15'
(Pelican Pass)
(Caldum Island)

12° 30'
12° 30'
10'
10'
T. 21 S.
T. 22 S.
T. 22 S.
T. 23 S.
T. 22 S.
T. 23 S.
90° 07' 30"
90° 07' 30"

Glenn S. Smith, Division engineer
Compiled by U. S. Geological Survey and U. S. Coast and
Geodetic Survey from aerial photographs taken by Air Corps, U. S. Army
Control by U. S. Coast and Geodetic Survey
Field examination by U. S. Geological Survey in 1935

TRUE NORTH
MAGNETIC NORTH
APPROXIMATE MEAN
DECLINATION, 1935



USGS
Historical File
Topographic Division

Polyconic projection. 1927 North American datum
Land lines added from General Land Office
records adjusted to natural features and control

Township lines, adjustment indefinite	---
Section lines, adjustment indefinite	---
Grant lines, adjustment indefinite	---
Ditches	---
Shallow ditches	---