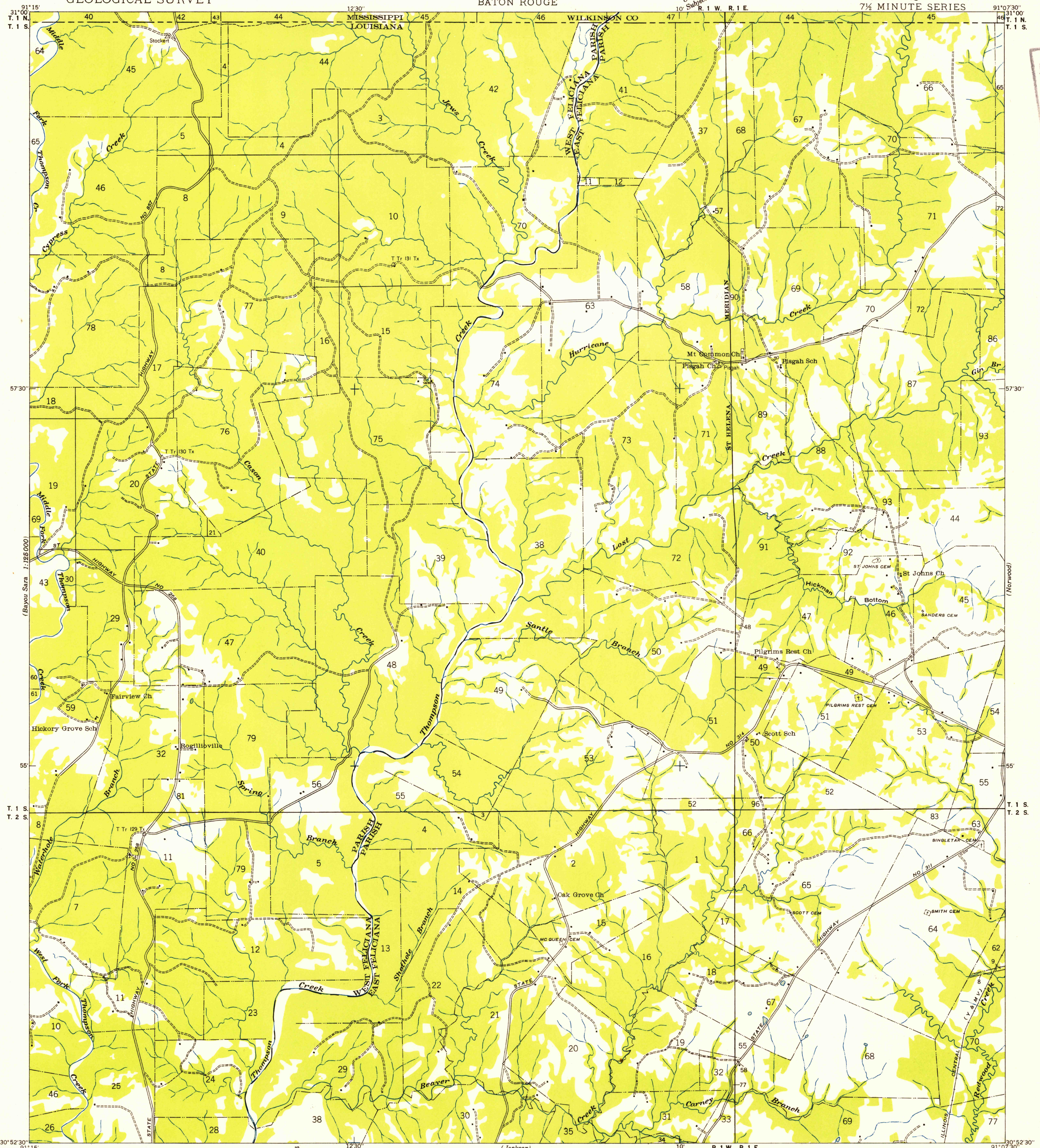


Unedited advance sheet
10' Subject to correction
R. I. W. R. I. E.

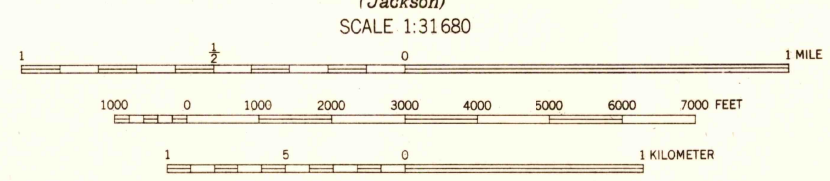
FILE COPY
Inspection and Editing

FILE COPY
Inspection and Editing



(Bayou Sara 9115)
Compiled by Geological Survey from aerial photographs
Field examination in 1941

TRUE NORTH
MAGNETIC NORTH
APPROXIMATE MEAN
DECLINATION 1941



USGS
Historical File
Topographic Division

Polyconic projection, 1927 North American datum
Land lines added from General Land Office
records adjusted to natural features and control

FILE COPY
Inspection and Editing

LOST CREEK, LA.
N3052.5-W9107.5/7.5

MAR 23 1954
1020