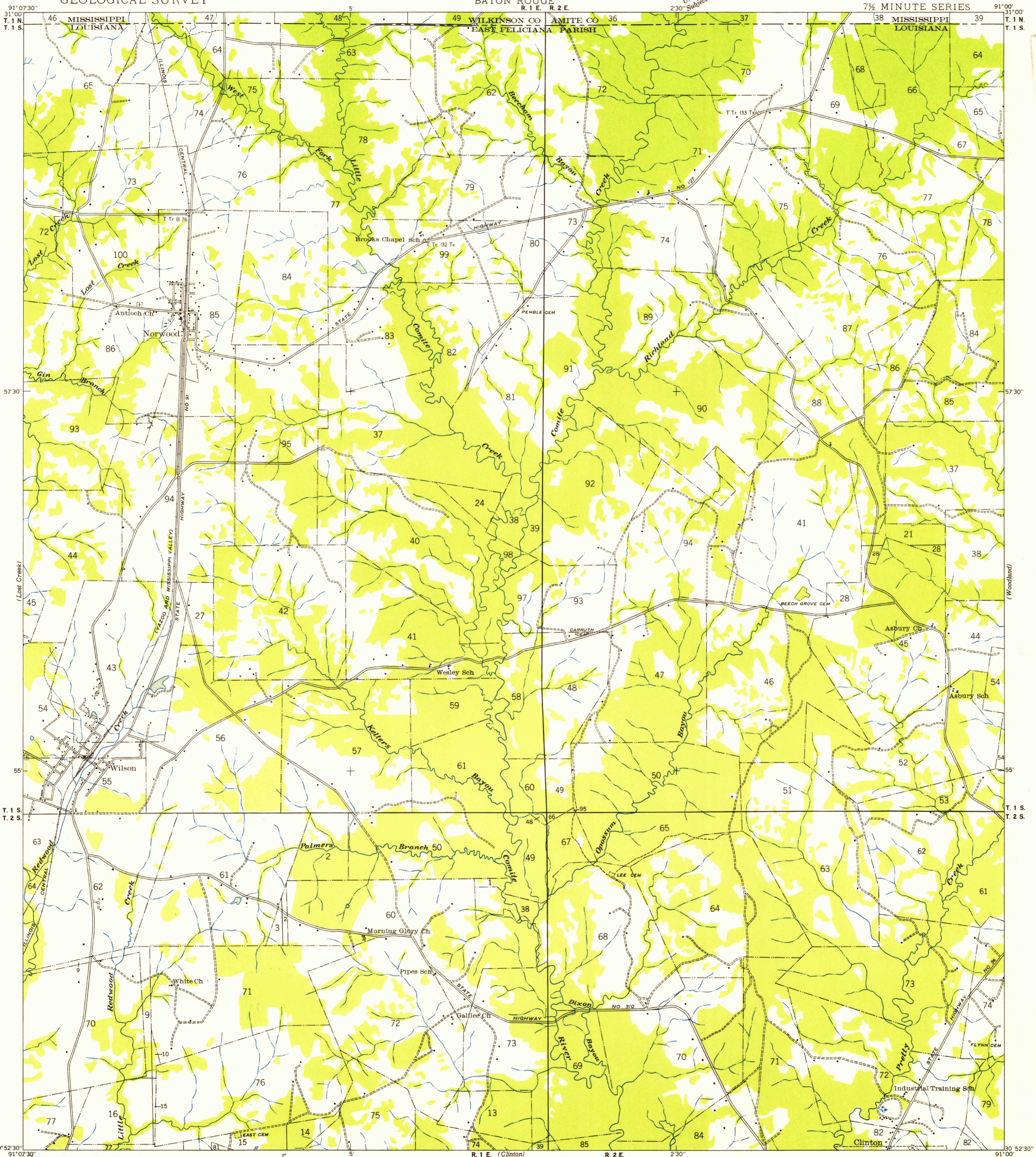


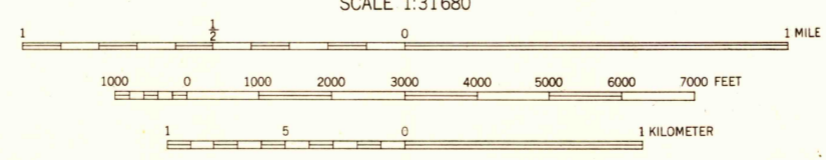
Unedited advance sheet
2'30" Subject to correction



U.S.G.S.
FILE COPY
Reproduction and Edition

30° 52' 30" 91° 07' 30" Compiled by Geological Survey from aerial photographs
Field examination in 1941

TRUE NORTH
MAGNETIC NORTH
APPROXIMATE MEAN
DECLINATION 1941



Polygonic projection. 1927 North American datum
Land lines added from General Land Office
records adjusted to natural features and control

U.S.G.S.
FILE COPY
Reproduction and Edition

USGS
Historical &
Topographic Division

NORWOOD, LA.
N3052.5-W9100/7.5

MAR 22 1954
1050