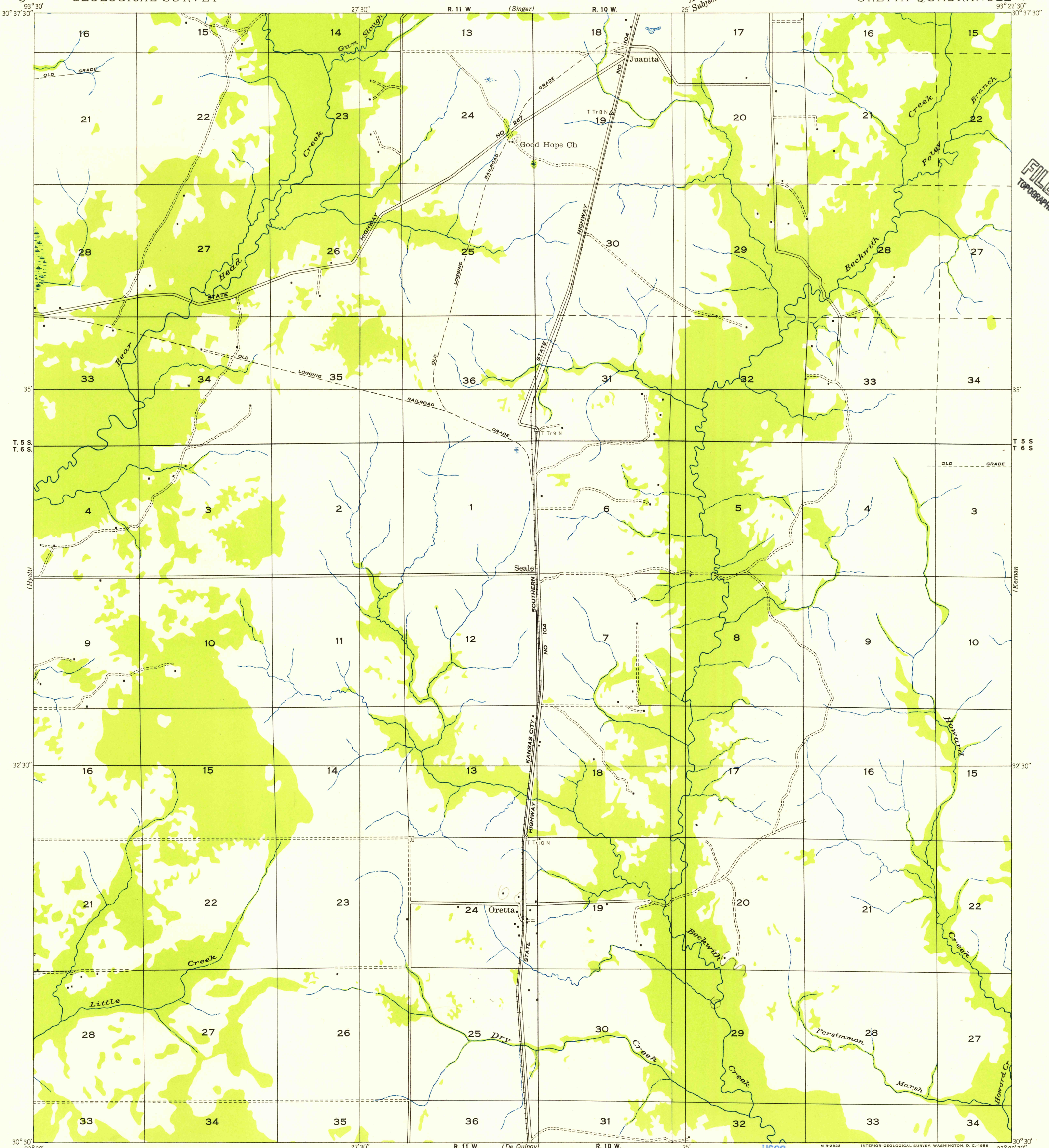


Advance sheet.
Subject to correction.

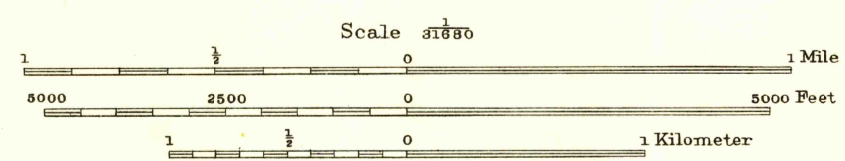
(Beckwith School)



U.S.G.S.
FILE COPY
TOPOGRAPHIC DIVISION

(Long Marsh)
Glenn S. Smith, Division Engineer
Compiled by Geological Survey from aerial photographs
Field examination in 1935

TRUE NORTH
MAGNETIC NORTH
APPROXIMATE MEAN
DECLINATION, 1955



USGS
Historical File
Topographic Division

M 19-2325
INTERIOR-GEOLOGICAL SURVEY, WASHINGTON, D. C. 1956
Polyconic projection. 1927 North American datum
Land lines added from General Land Office records adjusted to natural features and control
Township lines
Township lines, adjustment indefinite
Section lines
Section lines, adjustment indefinite

U.S.G.S.
FILE COPY
TOPOGRAPHIC DIVISION